

FRXD

BULLETIN NO. 1108

ISSUE 2

FEBRUARY, 1948

TELETYPE

PRINTING TELEGRAPH SYSTEMS

PARTS

REPERFORATOR TRANSMITTER
(MODEL 14)

FRXD1, 5, 9 AND 10
TYPE PALLET ARRANGEMENT 201
MOTOR ARRANGEMENTS EL, EM, EN AND EP

TELETYPE

REG. U. S. PAT. OFF.
CORPORATION

SUBSIDIARY OF

Western Electric Company

CHICAGO, U. S. A.

TELETYPE

PRINTING TELEGRAPH SYSTEMS

PARTS

REPERFORATOR TRANSMITTER (MODEL 14)

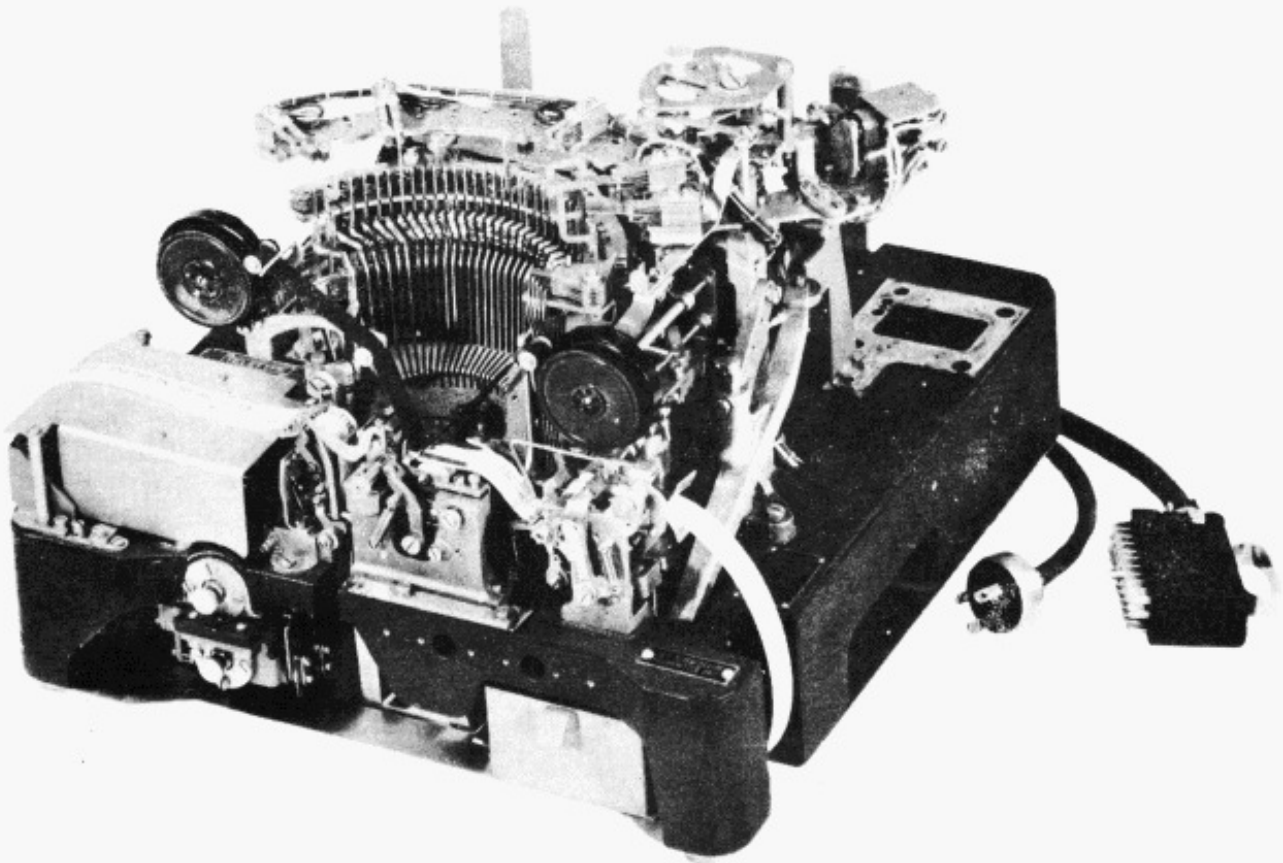
FRXD1, 5, 9 AND 10
TYPE PALLET ARRANGEMENT 201
MOTOR ARRANGEMENTS EL, EM, EN AND EP



ALPHABETICAL INDEX

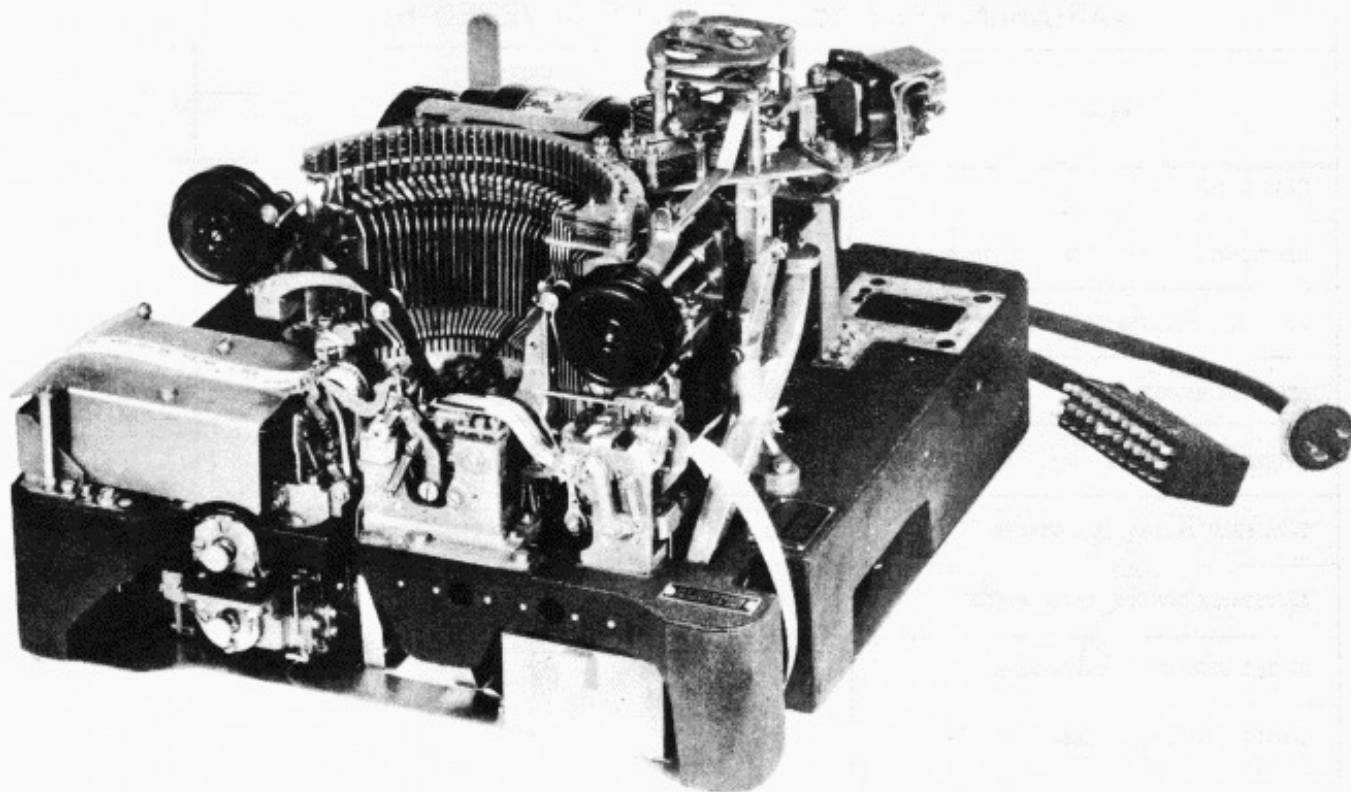
DESCRIPTION	PAGE NO.	DESCRIPTION	PAGE NO.
Bail and Code Bar Mounting Bracket - - - - -	8	Motor - Old Style - - - - -	-27
Base Casting - Top View - - - - -	1	Motor, Pinion and Gear Chart - - - - -	28
Base Casting - Bottom View - - - - -	2	Pinions - - - - -	28
Base Plate - - - - -	1	Pivoted Transmitter - New Style - - - - -	20
Cables - - - - -	29	Pivoted Transmitter - Old Style - - - - -	21
Cable Clamps - - - - -	2	Platen Shift Bail - - - - -	7
Cable - With Plug - - - - -	29	Platen Unit - - - - -	7
Cam Sleeve - Distributor Shaft - - - - -	3	Power Cord - - - - -	29
Cam Sleeve - Main Shaft - - - - -	13	Prepunch Unit - - - - -	16
Cam Sleeve - Sensing Shaft - - - - -	3	Pull Bars - - - - -	30
Chad Box - - - - -	1	Pull Bar Operated Contacts and Mounting Parts - - - - -	11
Clutch Magnet Bracket - - - - -	6	Punch Arm and Bracket - - - - -	18
Clutch Detent Lever Bracket - - - - -	6	Range Scale - - - - -	15
Code Bars - - - - -	10	Ribbon Reverse Parts - Left and Right - - -	9
Code Punch Block - - - - -	19	Ribbon Feed Unit - Left and Right - - - -	9
Code Punch Unit - - - - -	17,18	Selector Unit - - - - -	14
Condenser and Resistor Unit - - - - -	5	Sensing Shaft Cam Sleeve - - - - -	3
Contacts - Distributor Clutch Release - - - -	4	Sensing Contacts - - - - -	24,25
Contacts - Pull Bar Operated - - - - -	11	Sensing Shaft - - - - -	3
Contacts - Sensing (New Style) - - - - -	24	Series - Parallel Switch Bracket - - - - -	15
Contacts - Sensing (Old Style) - - - - -	25	Strap - - - - -	29
Contacts - Tape Feed Indicator - - - - -	19	Sub Shaft - - - - -	5
Contacts - Tape-Out - - - - -	6	Synchronous Motor - New Style - - - - -	26
Contacts - Transmitter Auxiliary - - - - -	4	Synchronous Motor - Old Style - - - - -	27
Contacts - Transmitter Stop - - - - -	6	Tape Chute - - - - -	5
Contacts - Universal - - - - -	19	Tape Feed Indicator Contacts - - - - -	19
Distributor Clutch Release Contacts - - - -	4	Tape-Out Contacts - - - - -	6
Distributor Shaft - - - - -	3	Tape Platform - New Style - - - - -	24
Distributor Shaft Cam Sleeve - - - - -	3	Tape Platform - Old Style - - - - -	25
Distributor Shaft Bracket - - - - -	4	Terminal Blocks - - - - -	2
Feet - - - - -	2	Transfer Bail and Slide - New Style - - - -	22
Function Bars - - - - -	30	Transfer Bail and Slide - Old Style - - - -	23
Gears - - - - -	8,9,28	Transmitter Auxiliary Contacts - - - - -	4
Gear Guard - - - - -	1	Transmitter Stop Contacts - - - - -	6
Main Shaft - - - - -	13	Type Bars - - - - -	30
Main Shaft Cam Sleeve - - - - -	13	Type Bar Backstop - - - - -	10
Main Shaft Bracket - - - - -	12	Type Bar Pallets - - - - -	30
Manual Tape Feed-Out Parts - - - - -	15	Type Bar Segment - - - - -	10,11
Motor - New Style- - - - -	26	Universal Contacts - - - - -	19

B
(B-1108)



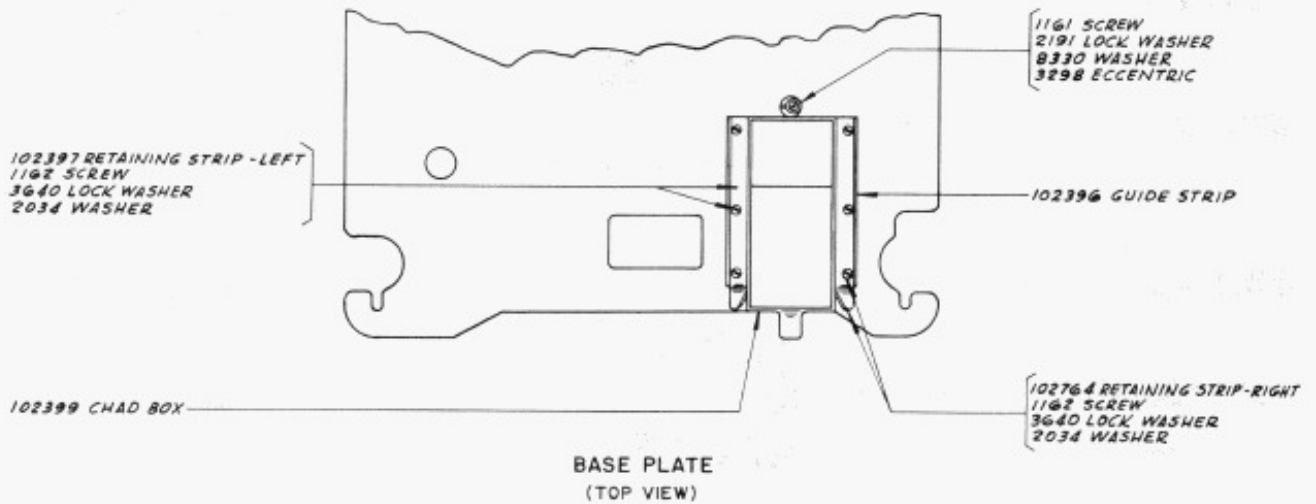
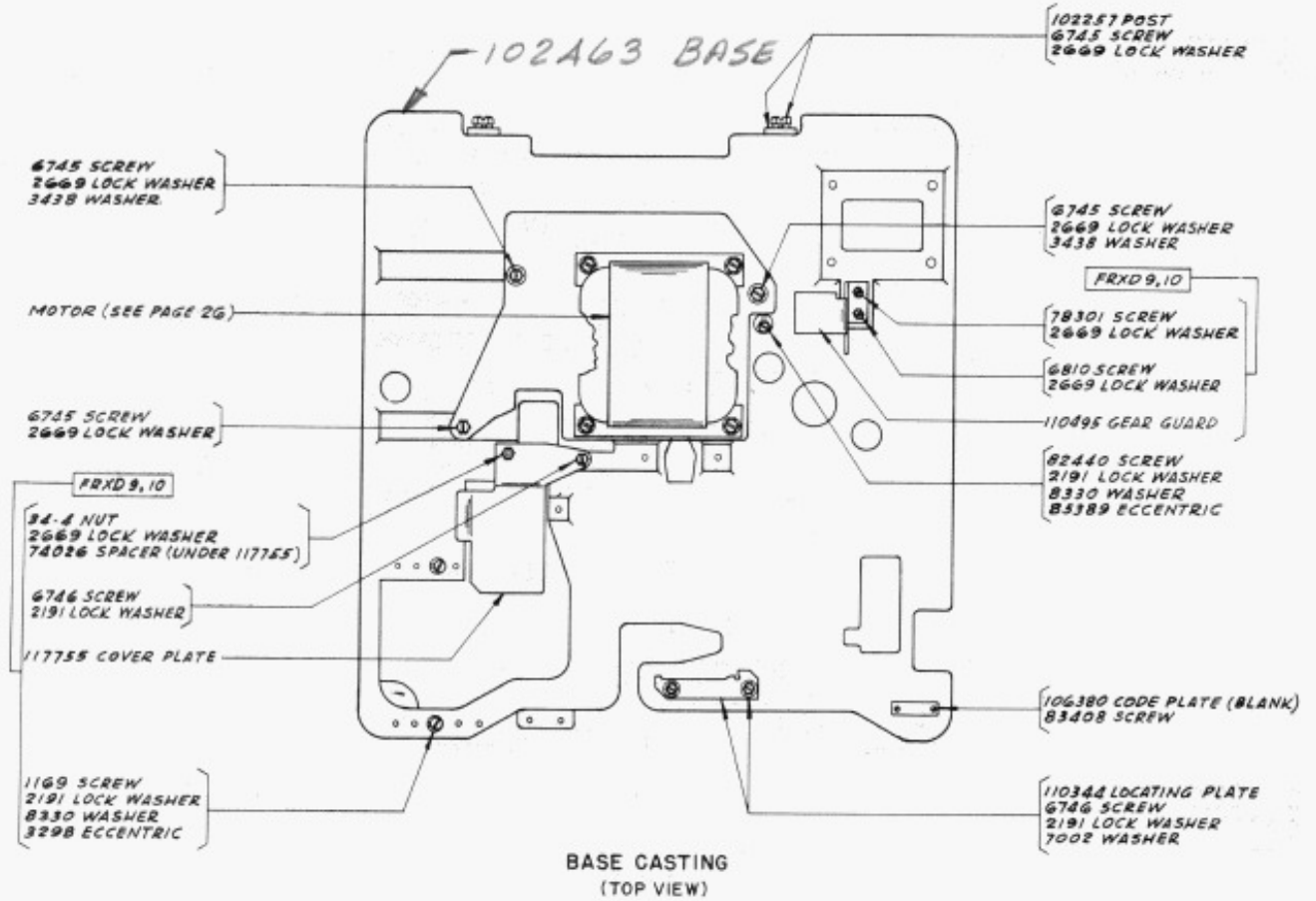
FRXD1 & 9
(EQUIPPED WITH PULL BAR OPERATED CONTACTS)

C
(B-1108)

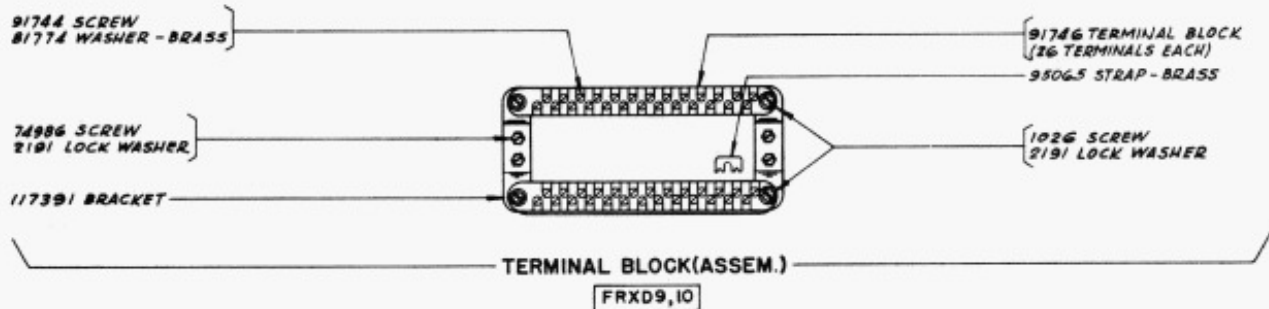
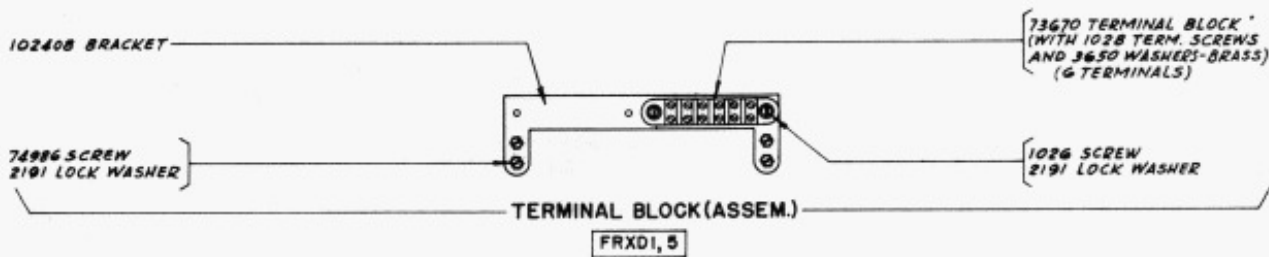
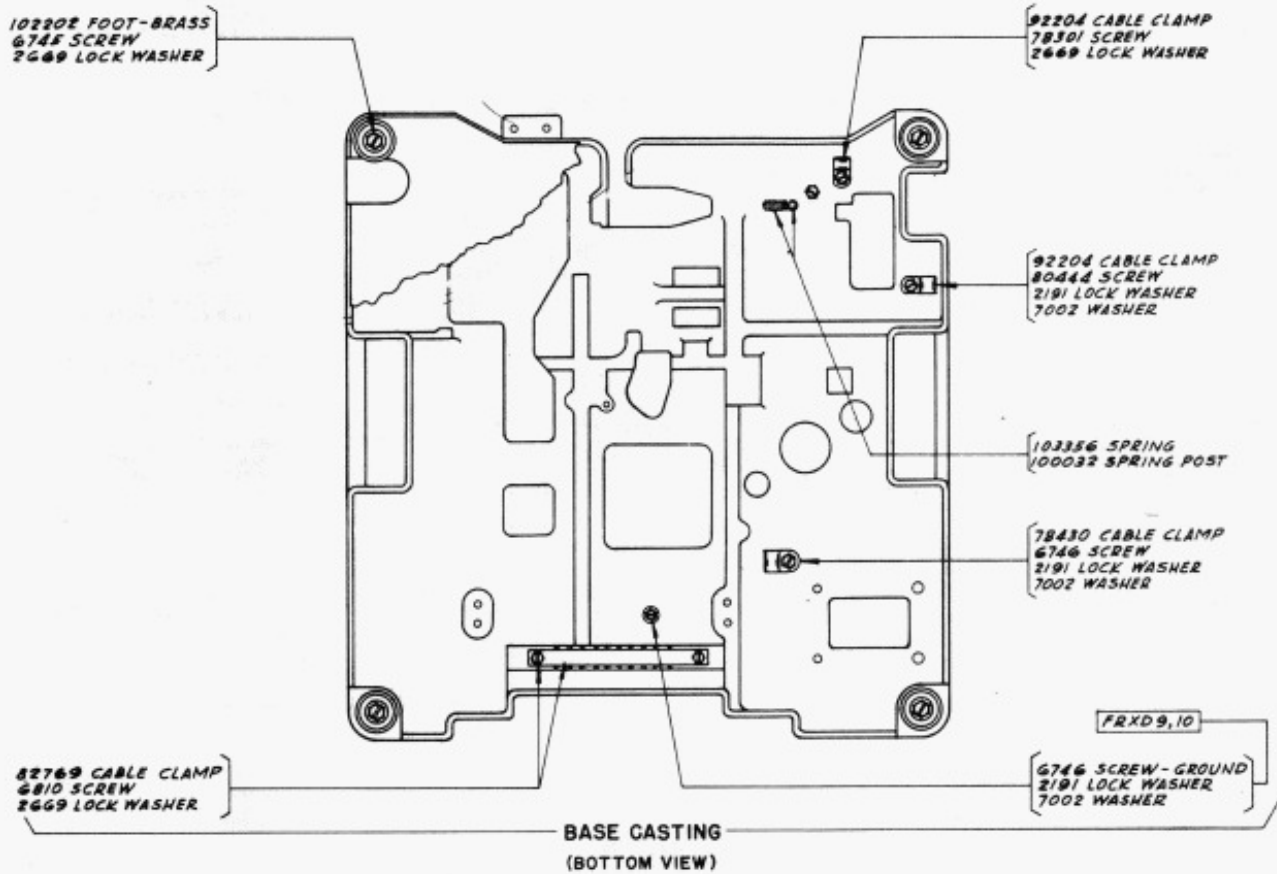


FRXD5 & 10
(NOT EQUIPPED WITH PULL BAR OPERATED CONTACTS)

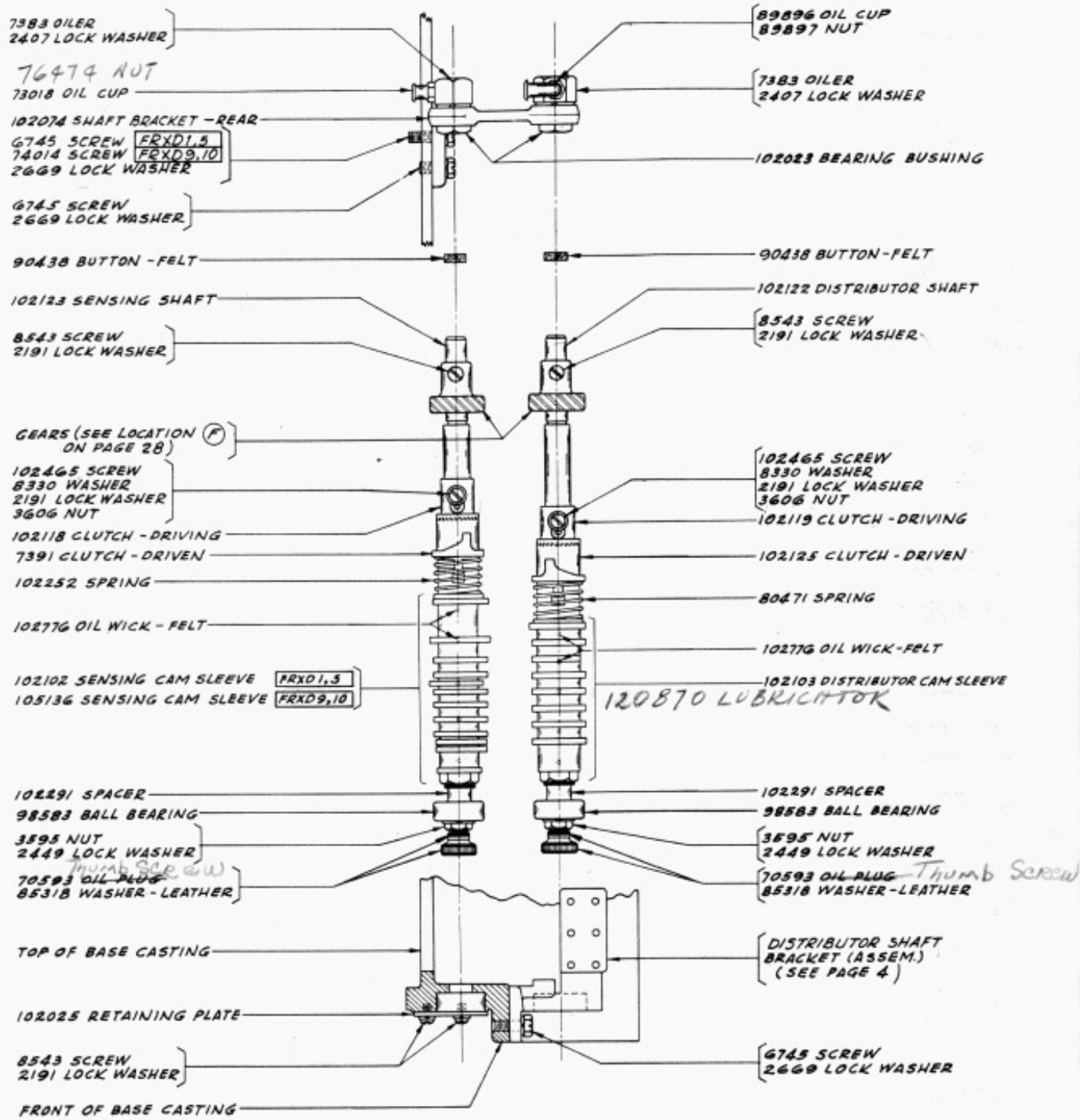
VARIABLE FEATURES OF UNITS COVERED HEREIN					
FEATURES	UNITS				SHOWN ON PAGE
	FRXD1 (14D)	FRXD5 (14E)	FRXD9 (14F)	FRXD10 (14G)	
GEAR GUARD	NO	NO	YES	YES	1
DISTRIBUTOR SHAFT MAGNET COVER PLATE	NO	NO	YES	YES	1
PULL BAR OPERATED CONTACTS	YES	NO	YES	NO	11
SELECTOR MAGNET GUARD	NO	NO	YES	YES	14
UNIVERSAL CONTACTS	YES	NO	YES	YES	19
TAPE FEED INDICATOR CONTACTS	NO	NO	YES	YES	19
ADJUSTABLE CONTACT LEVER BAILS	NO	NO	YES	YES	22
DISTRIBUTOR SHAFT CAM SLEEVE	OLD STYLE	OLD STYLE	NEW STYLE	NEW STYLE	3
SENSING SHAFT CAM SLEEVE					3
SUB-SHAFT					5
PLATEN SHIPT BRACKET					7
CODE PUNCH BLOCK SUPPORT					19
PIVOTED TRANSMITTER					20,21
TAPE PLATFORM					24,25
SENSING CONTACTS MOUNTING BRACKET					24,25



UNLESS OTHERWISE SPECIFIED
ALL PARTS SHOWN ON THIS PAGE
ARE COMMON TO FRXD1,5,9 & 10

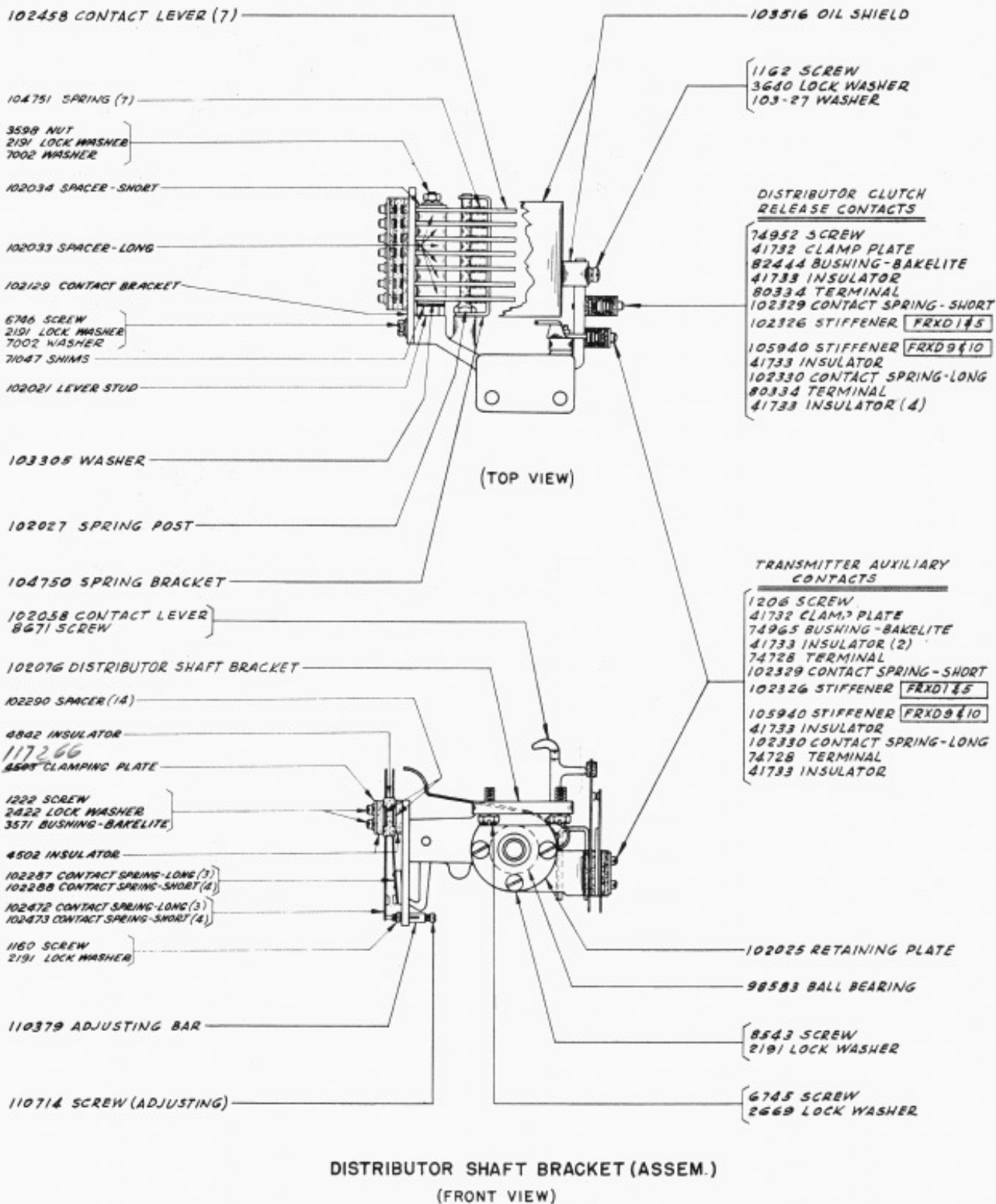


UNLESS OTHERWISE SPECIFIED
ALL PARTS SHOWN ON THIS PAGE
ARE COMMON TO FRXD1,5,9 & 10

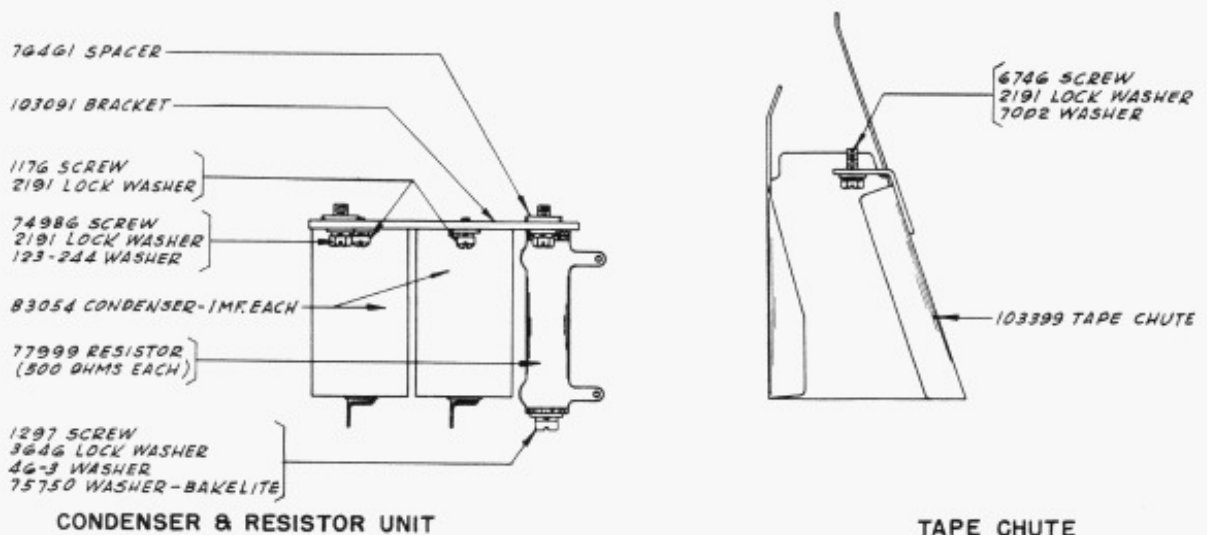
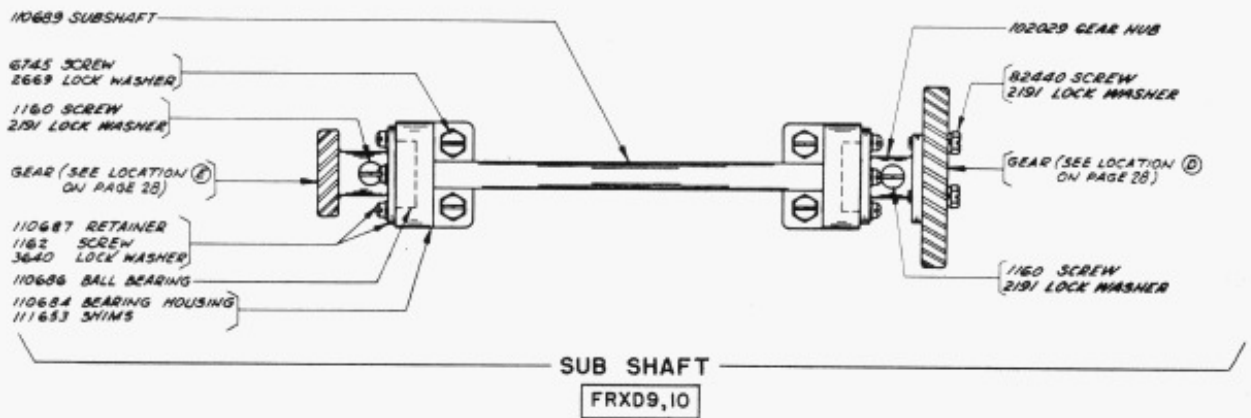
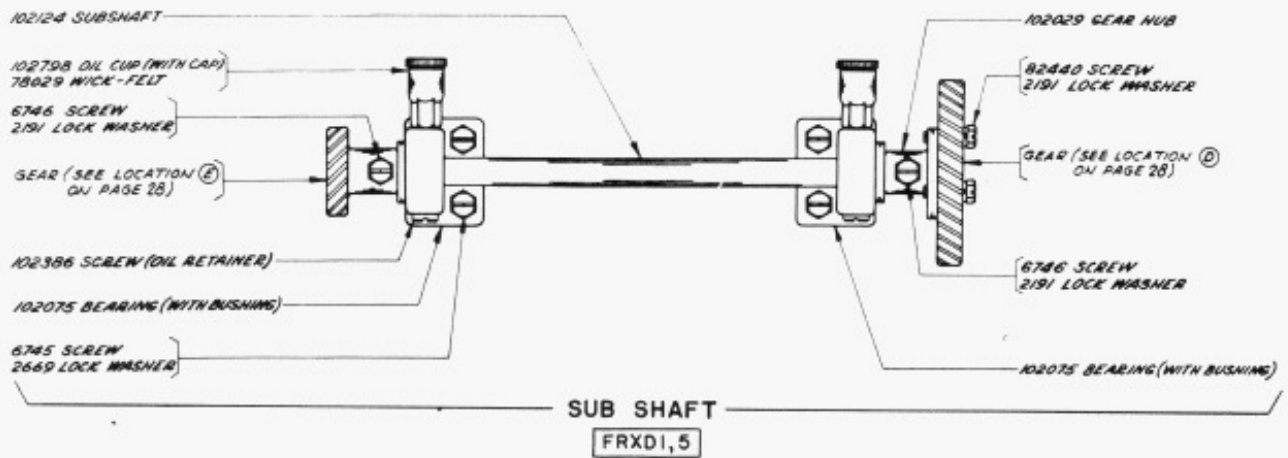


SENSING AND DISTRIBUTOR SHAFTS

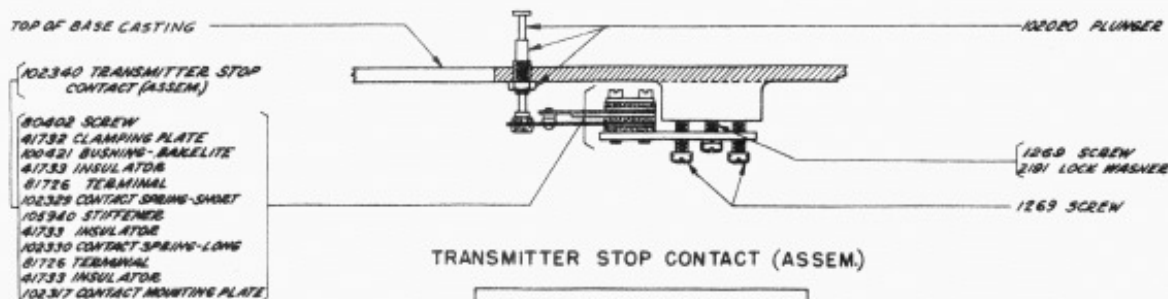
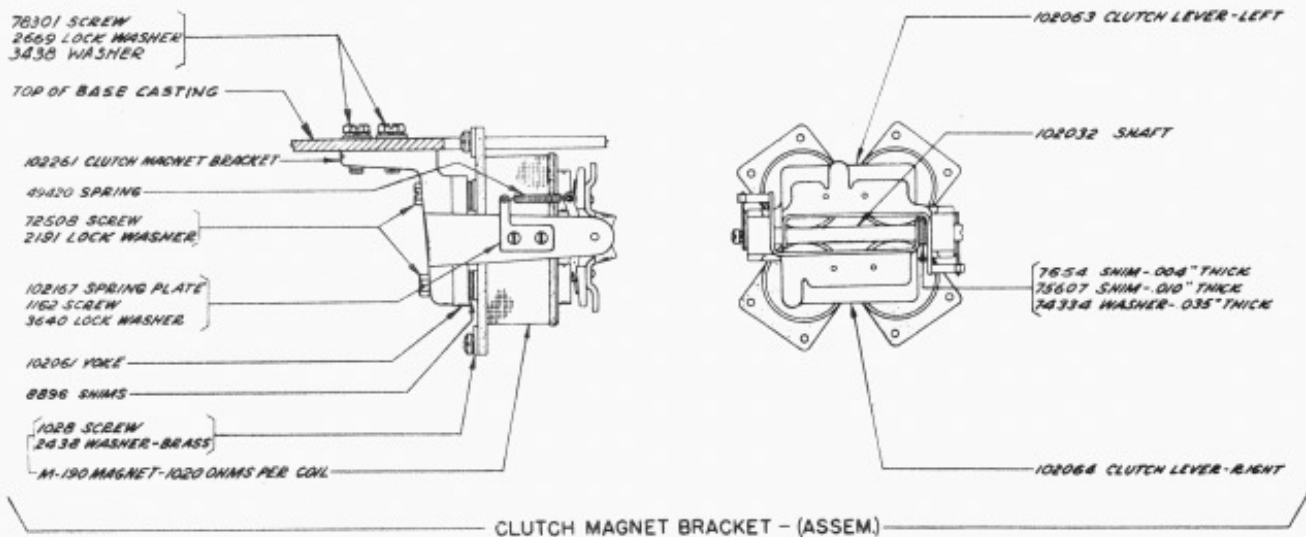
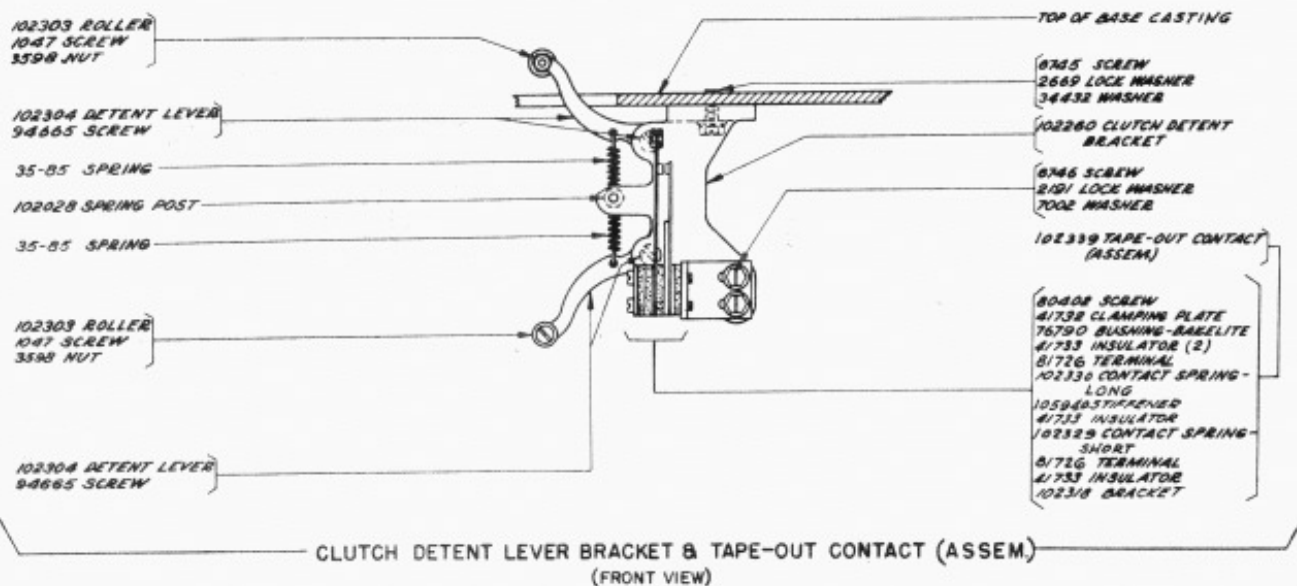
UNLESS OTHERWISE SPECIFIED
ALL PARTS SHOWN ON THIS PAGE
ARE COMMON TO FRXD1,5,9 & 10



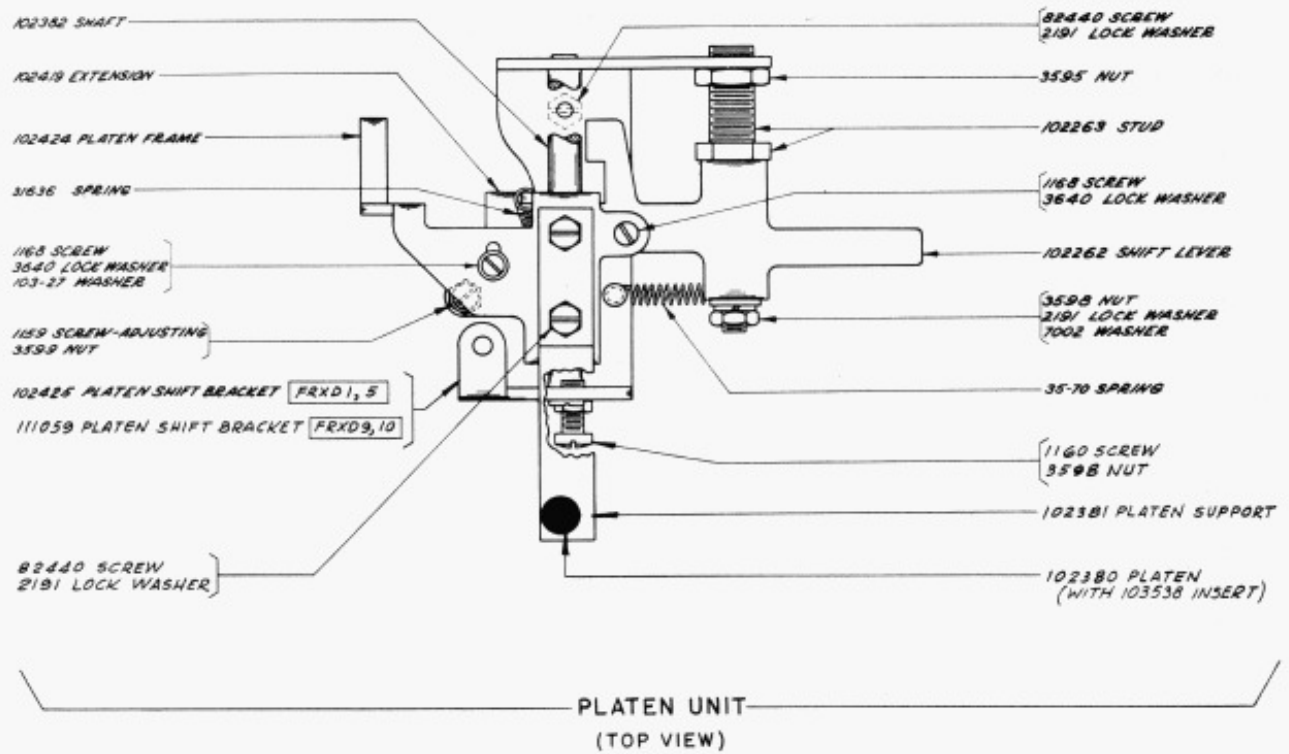
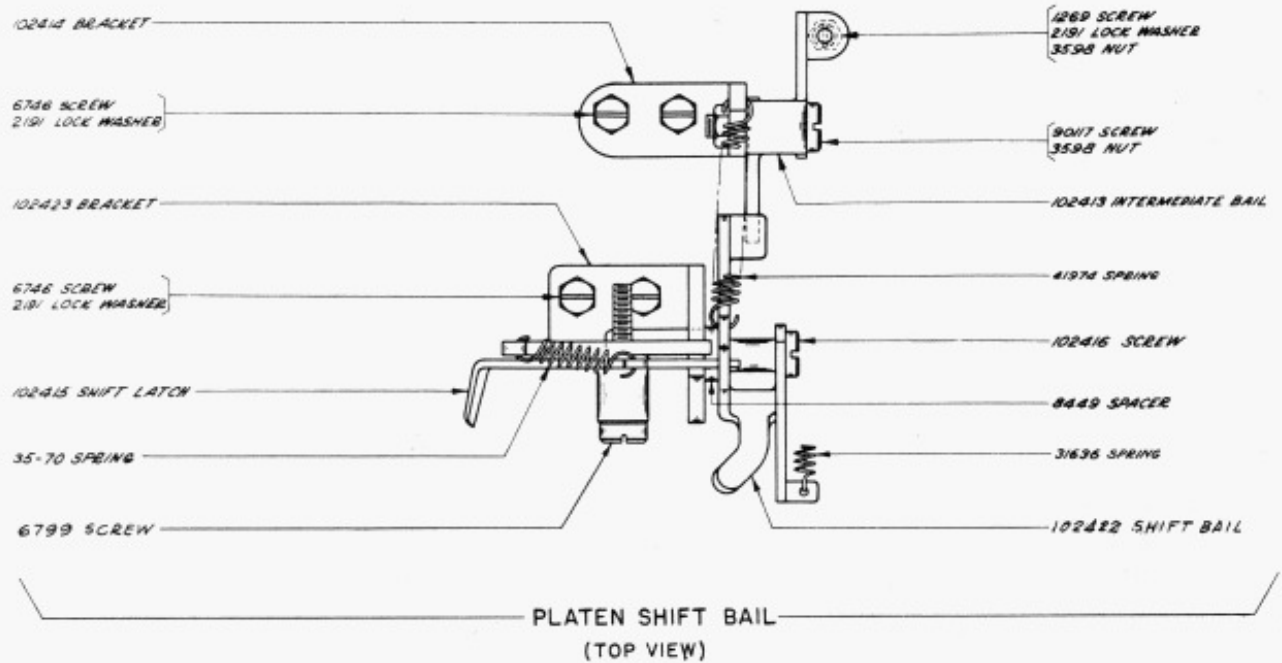
UNLESS OTHERWISE SPECIFIED
ALL PARTS SHOWN ON THIS PAGE
ARE COMMON TO FRXD1,5,9 & 10



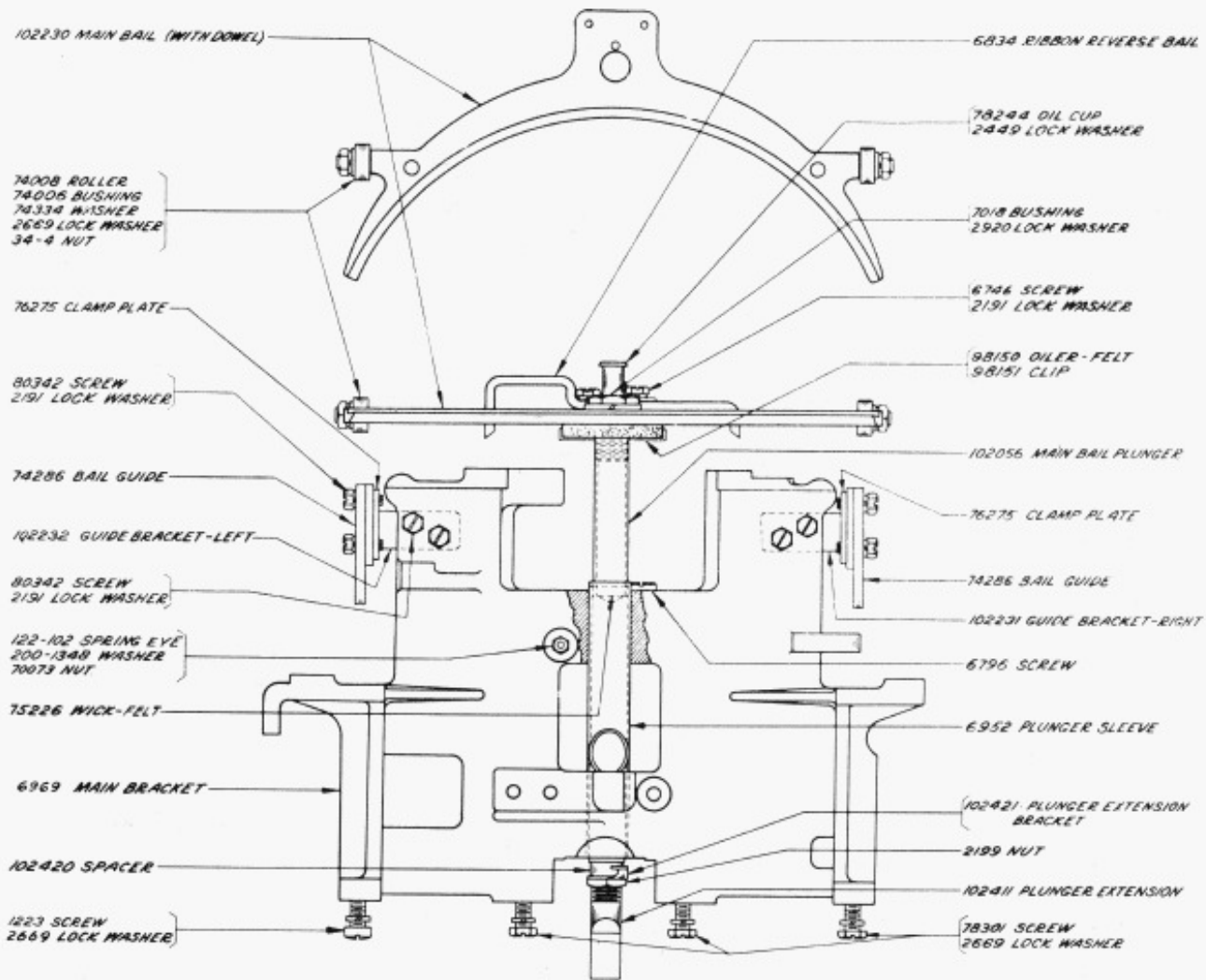
UNLESS OTHERWISE SPECIFIED
ALL PARTS SHOWN ON THIS PAGE
ARE COMMON TO FRXD1,5,9 & 10



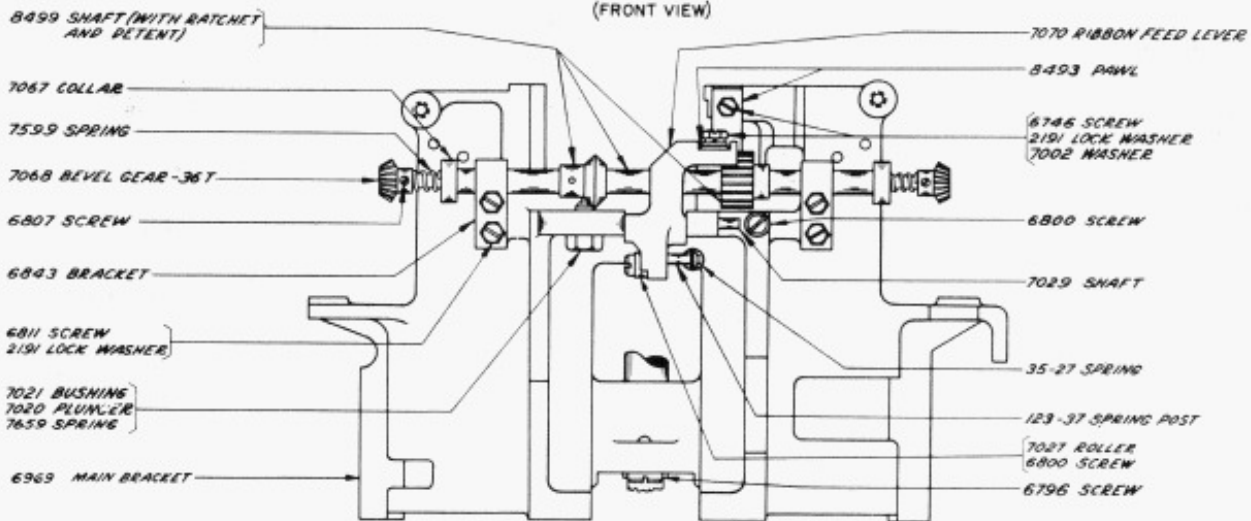
ALL PARTS SHOWN ON THIS PAGE
ARE COMMON TO FRXD1, 5, 9 & 10



UNLESS OTHERWISE SPECIFIED
ALL PARTS SHOWN ON THIS PAGE
ARE COMMON TO FRXD1,5,9 & 10

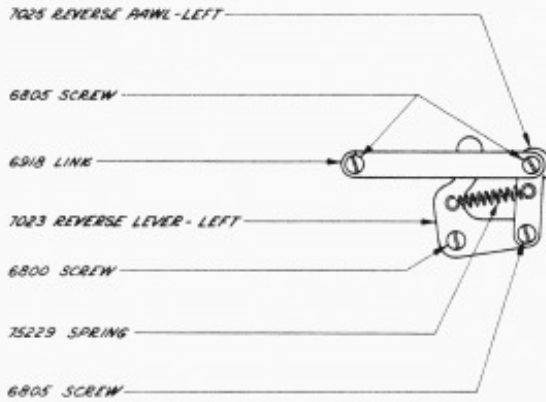


(FRONT VIEW)

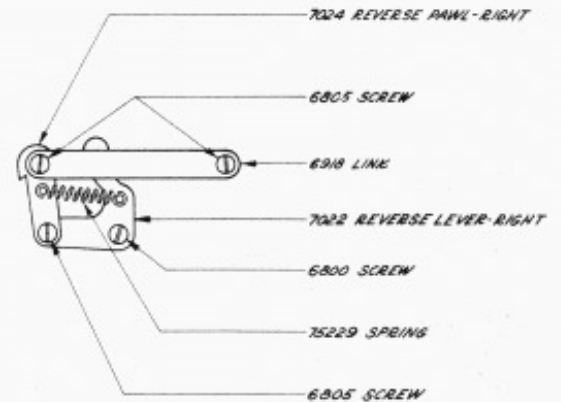


BAIL AND CODE BAR MOUNTING BRACKET (ASSEM.)
(REAR VIEW)

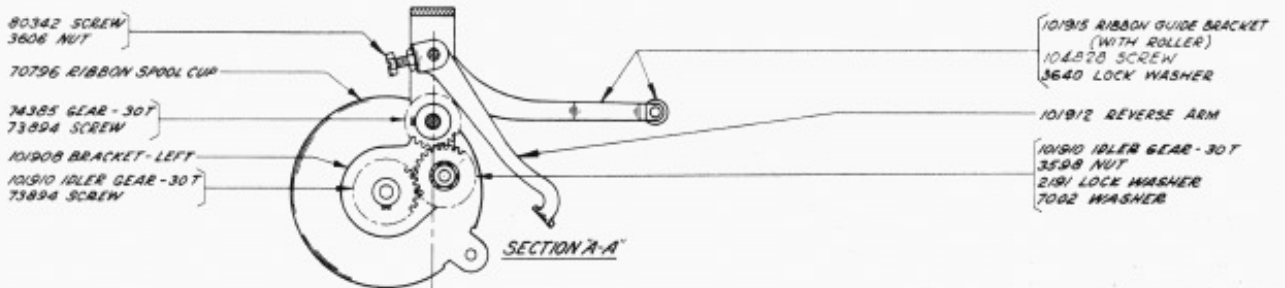
ALL PARTS SHOWN ON THIS PAGE
ARE COMMON TO FRXD1,5,9 & 10



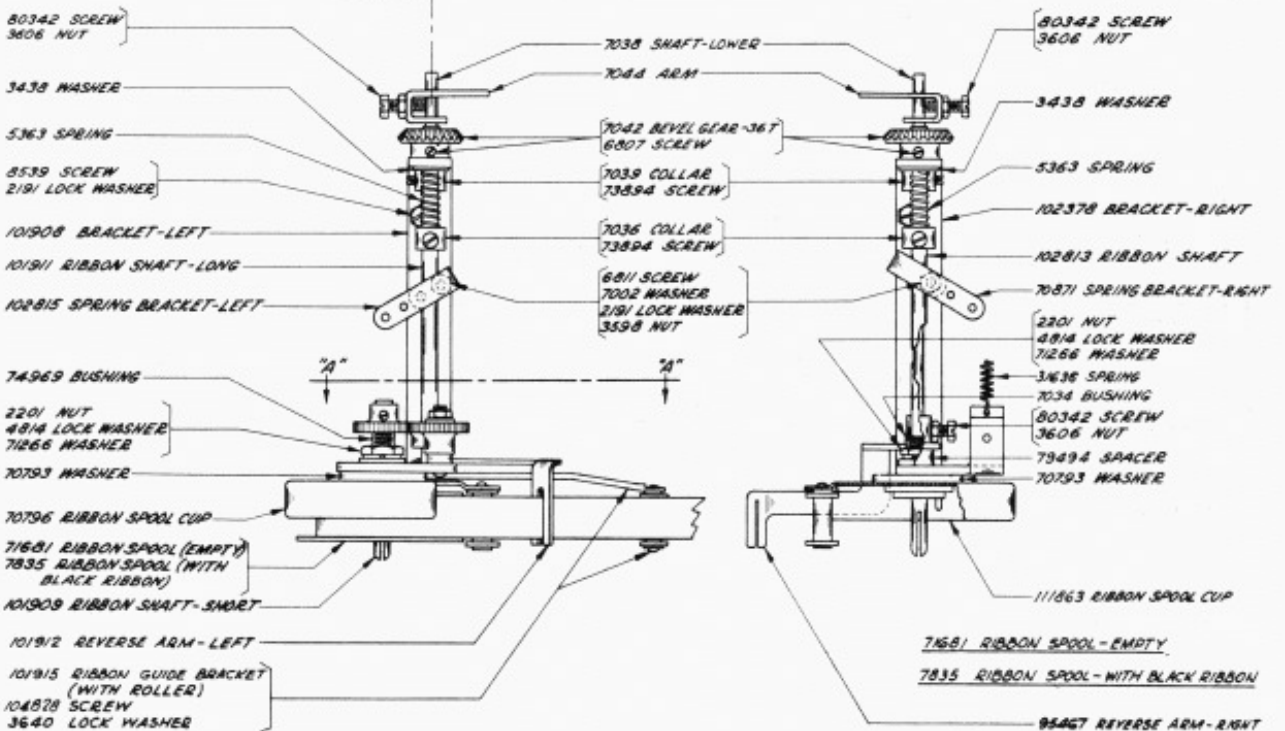
RIBBON REVERSE PARTS - LEFT



RIBBON REVERSE PARTS - RIGHT

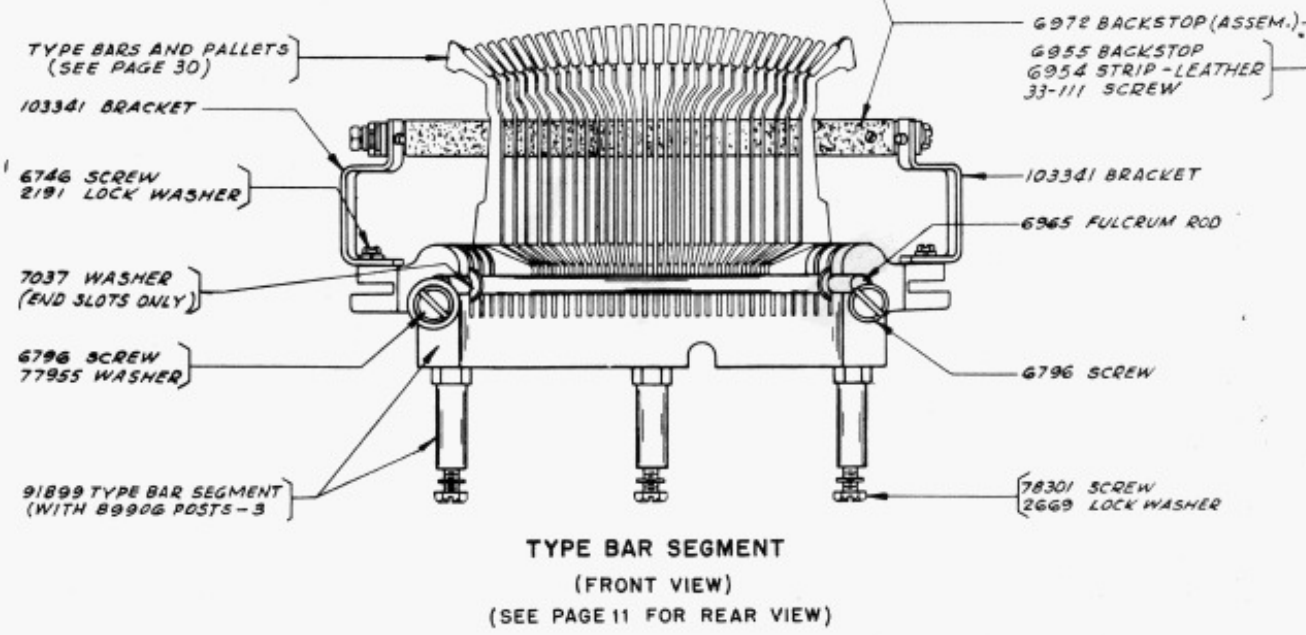
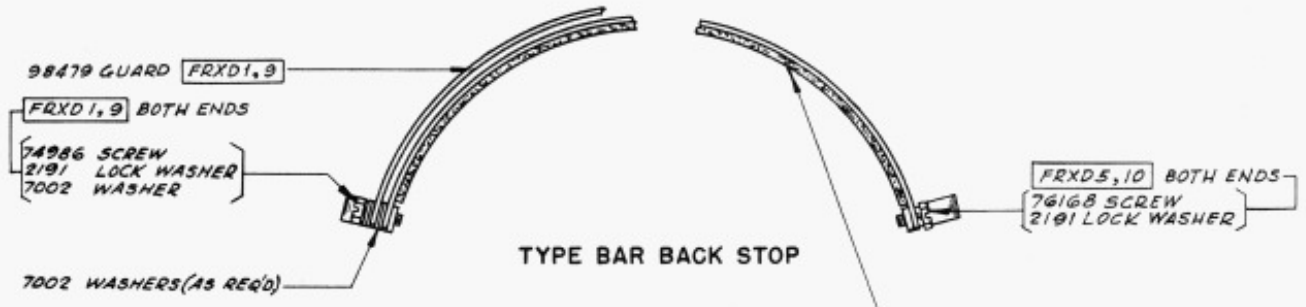
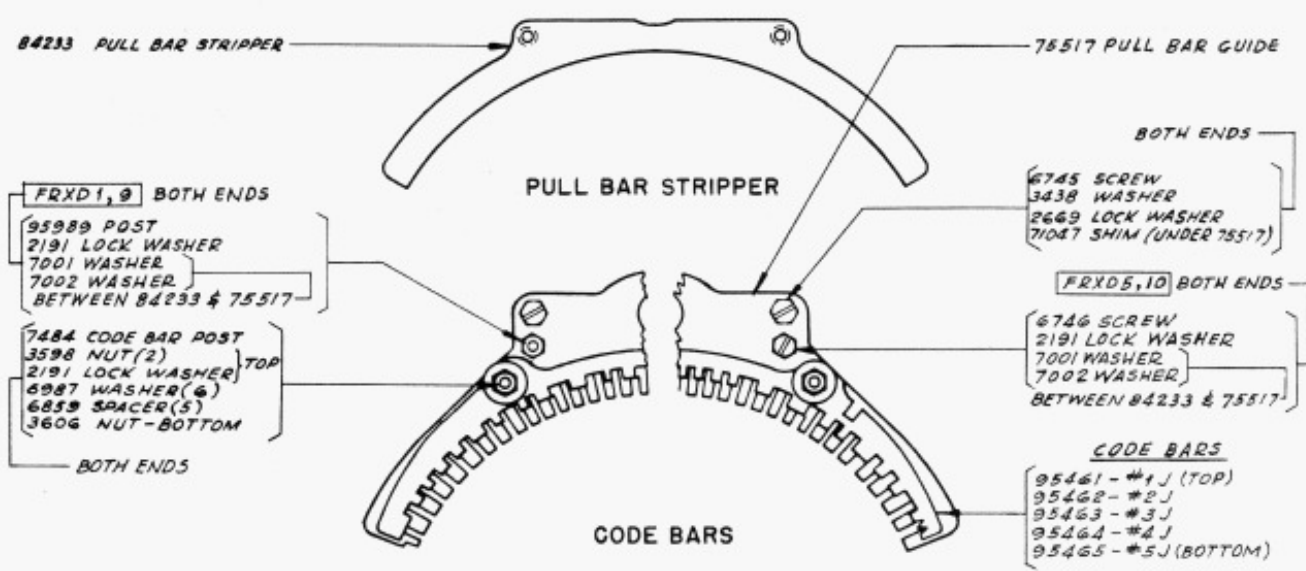


RIBBON FEED UNIT (ASSEM) - LEFT
(TOP VIEW)

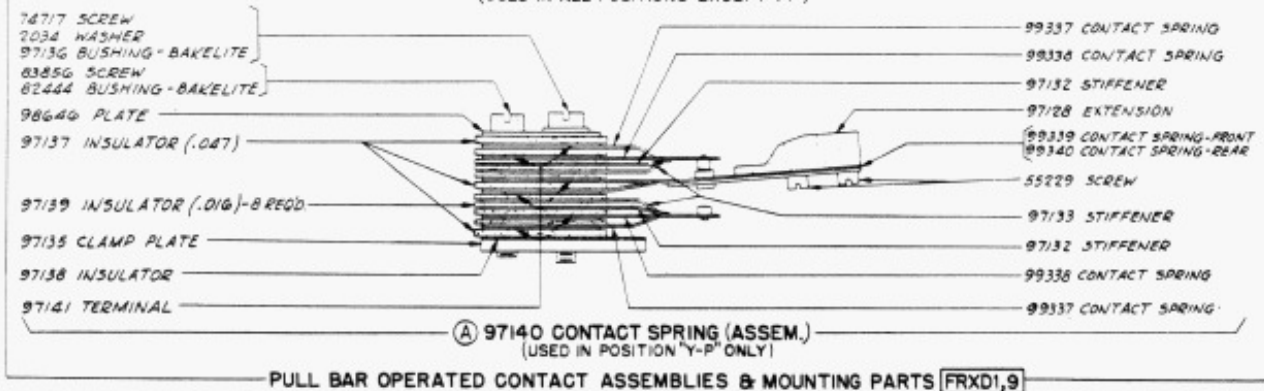
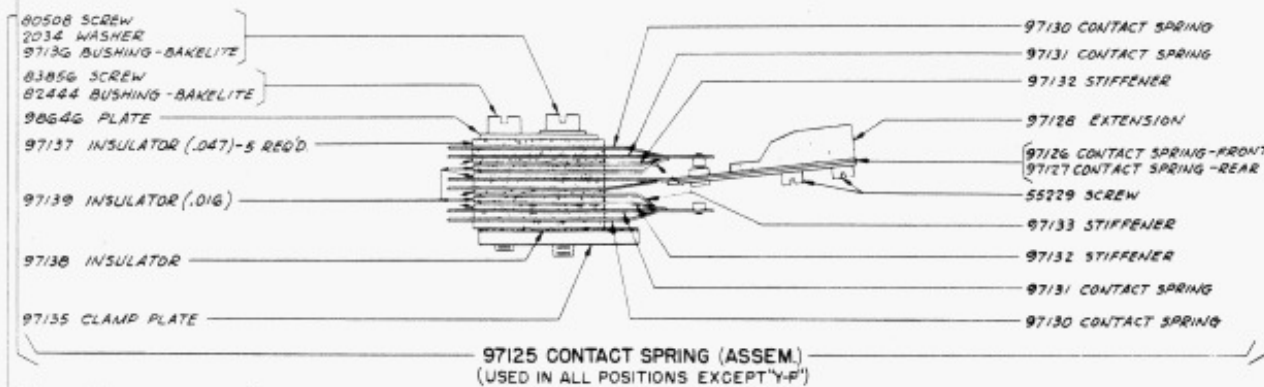
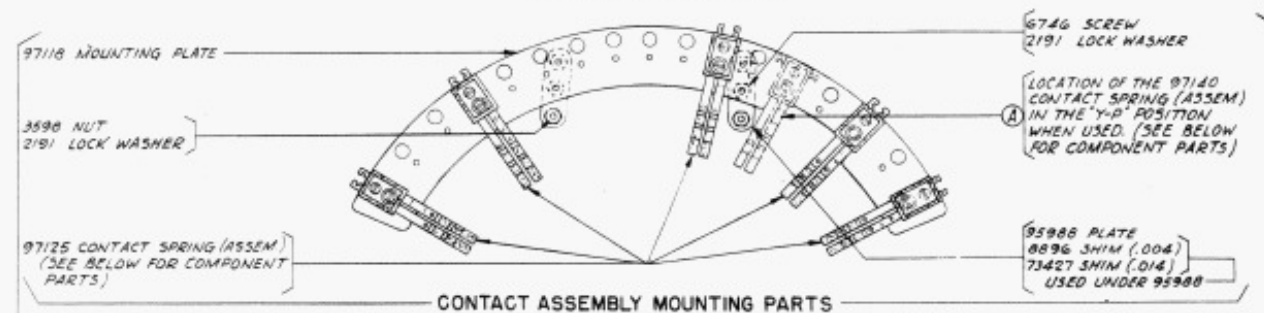
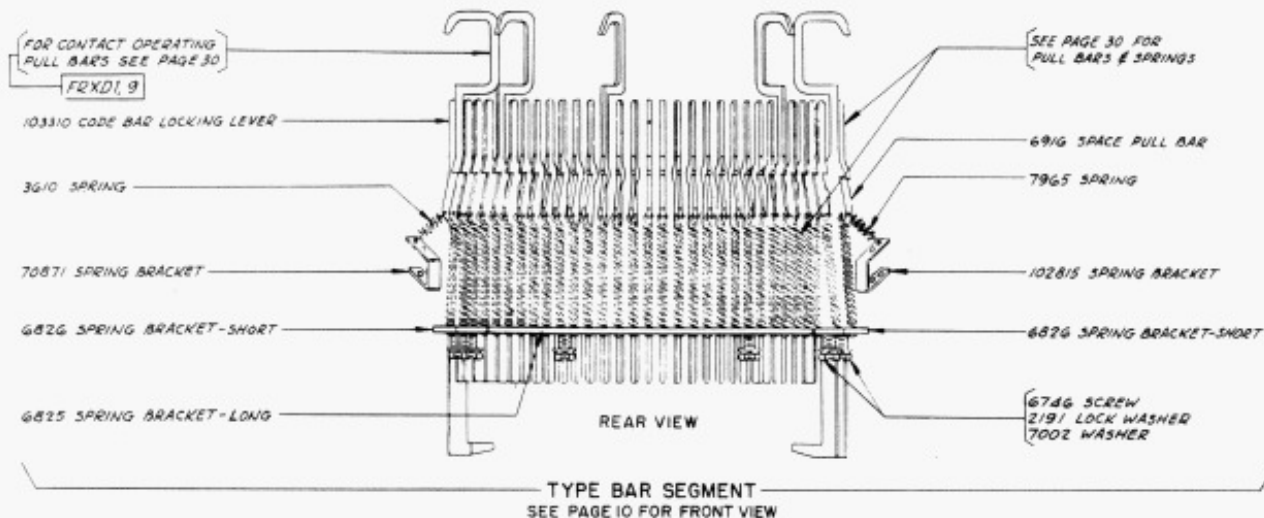


RIBBON FEED UNIT (ASSEM) - RIGHT
(TOP VIEW)

ALL PARTS SHOWN ON THIS PAGE
ARE COMMON TO FRXD1,5,9 & 10

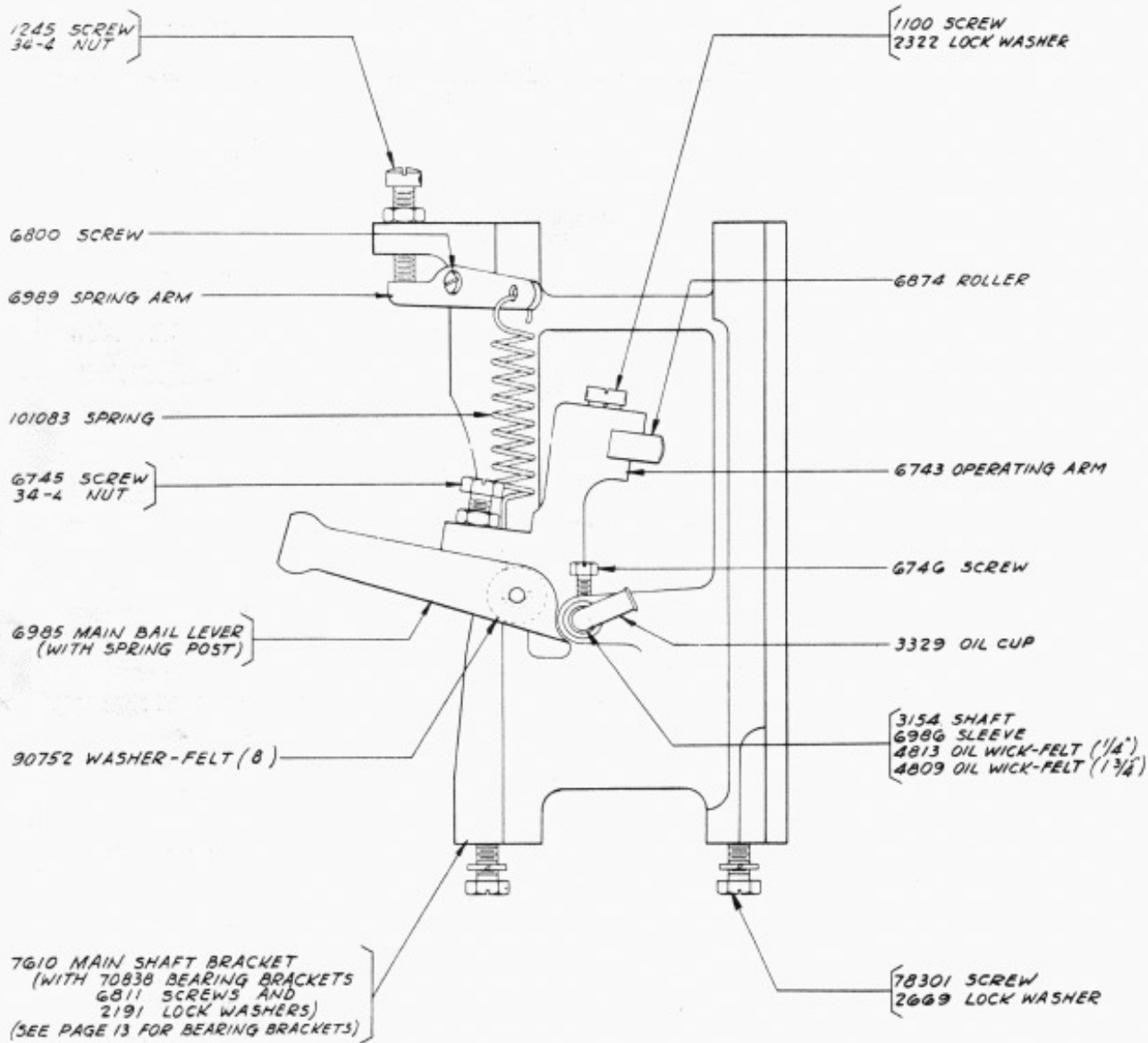


UNLESS OTHERWISE SPECIFIED
ALL PARTS SHOWN ON THIS PAGE
ARE COMMON TO FRXD1,5,9 & 10



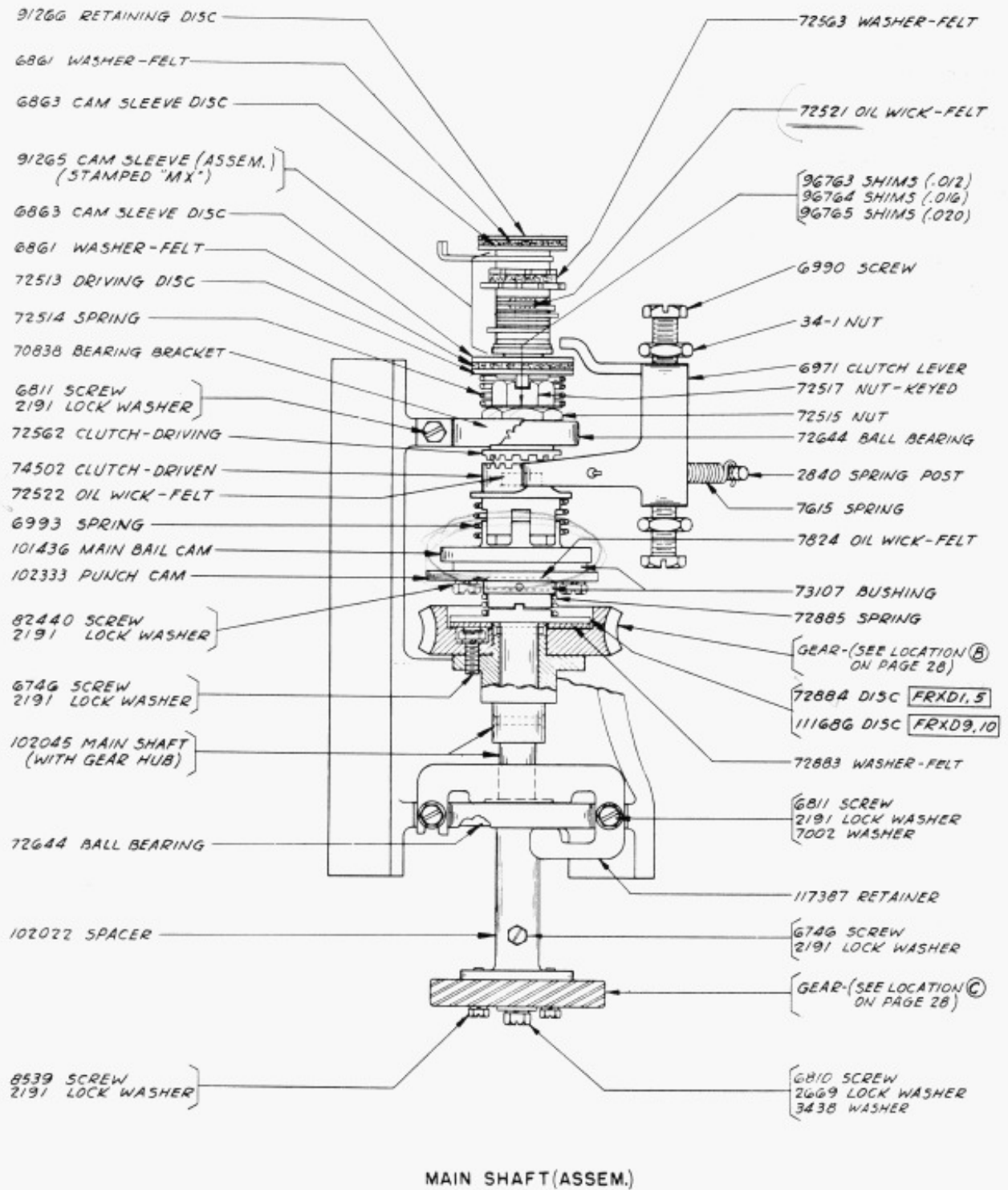
② THE 97140 CONTACT SPRING (ASSEM.) IS NOT INCLUDED IN FRXD1, 5, 9 DR 10 BUT MAY BE ORDERED FOR SPECIAL APPLICATIONS.

UNLESS OTHERWISE SPECIFIED ALL PARTS SHOWN ON THIS PAGE ARE COMMON TO FRXD1, 5, 9 & 10

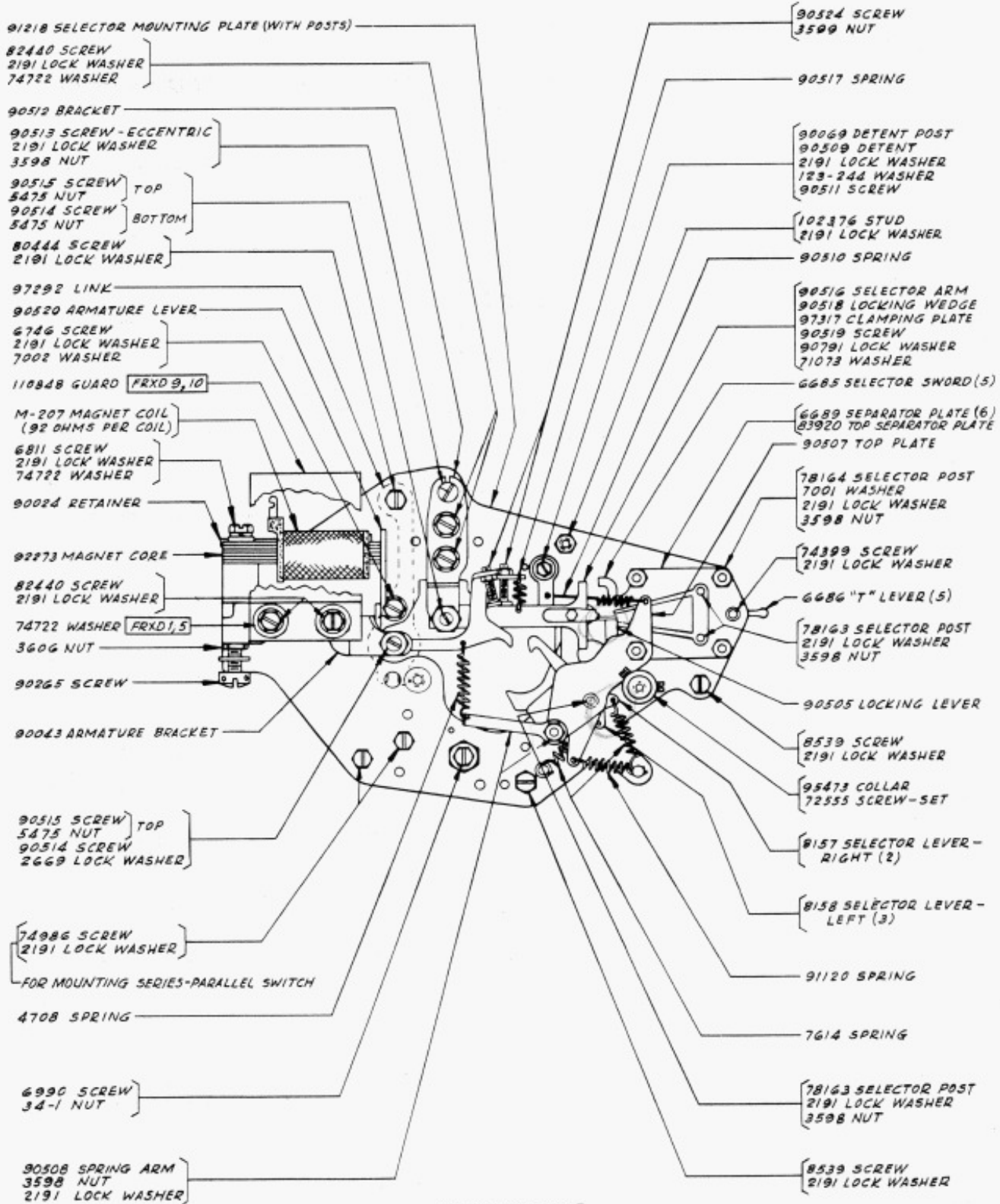


MAIN SHAFT BRACKET (ASSEM.)

ALL PARTS SHOWN ON THIS PAGE
ARE COMMON TO FRXD1,5,9 & 10

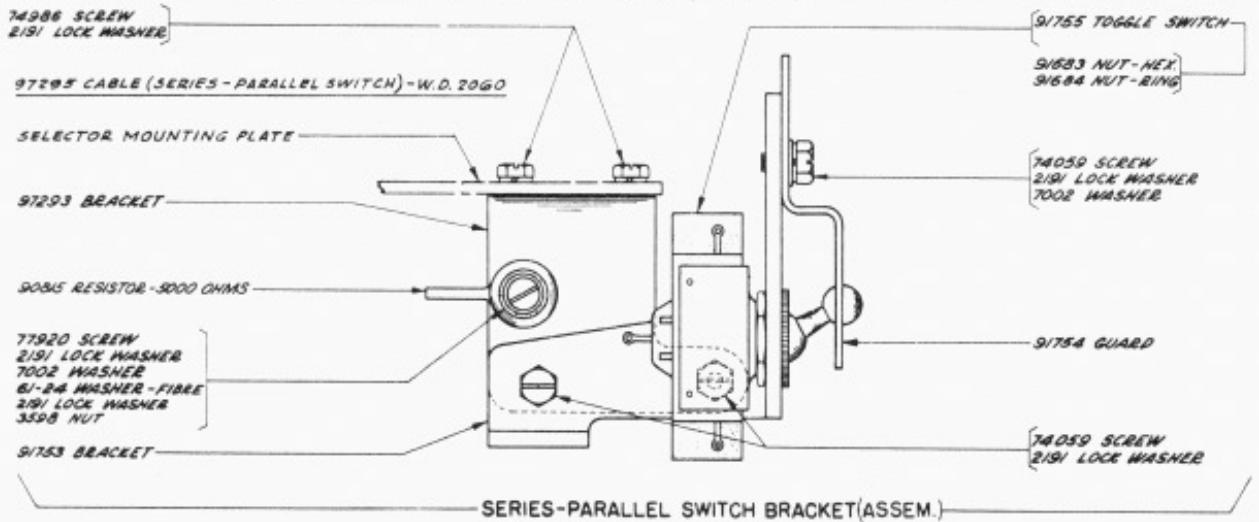
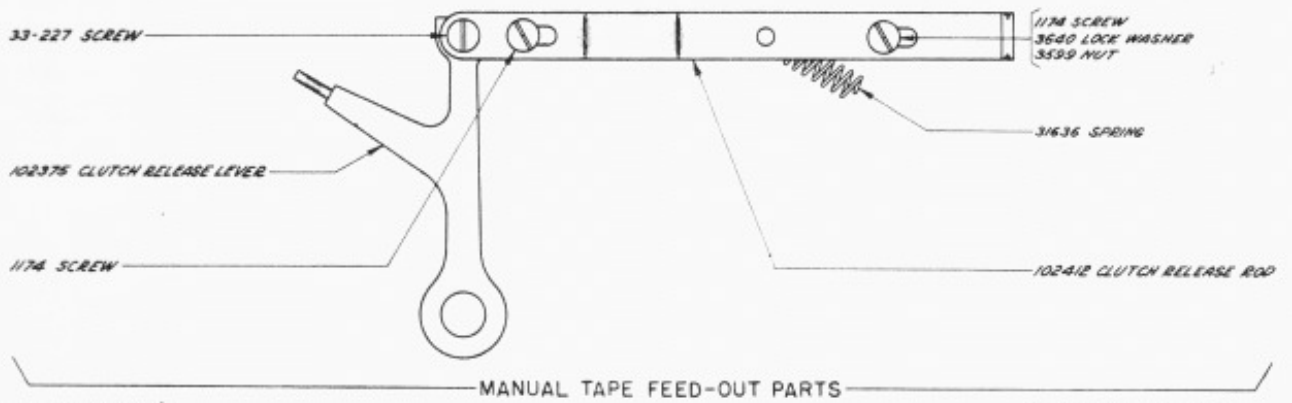
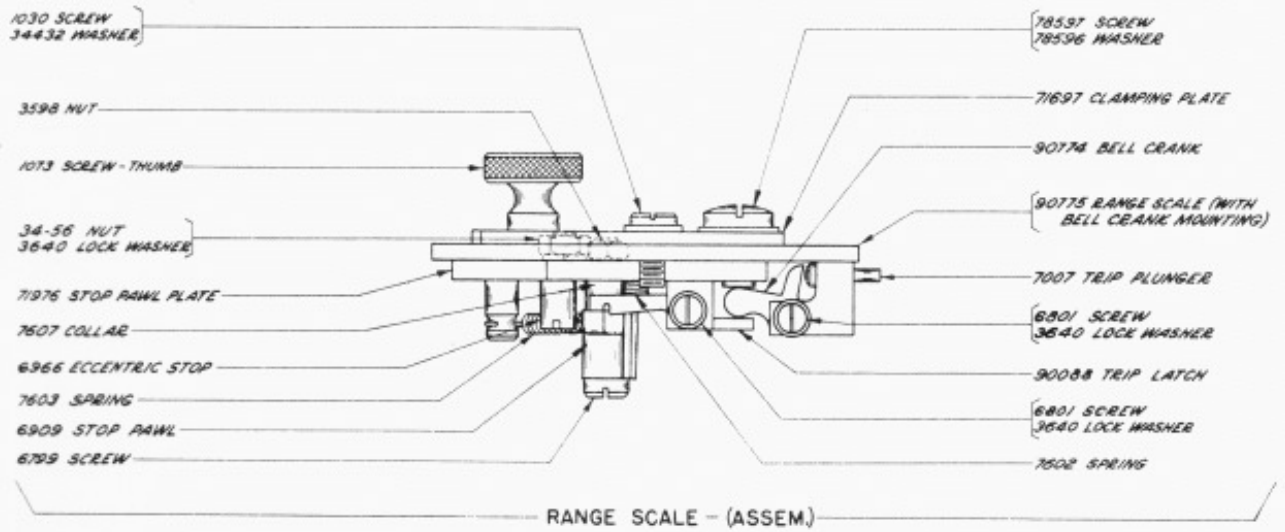


UNLESS OTHERWISE SPECIFIED
ALL PARTS SHOWN ON THIS PAGE
ARE COMMON TO FRXD1,5,9 & 10

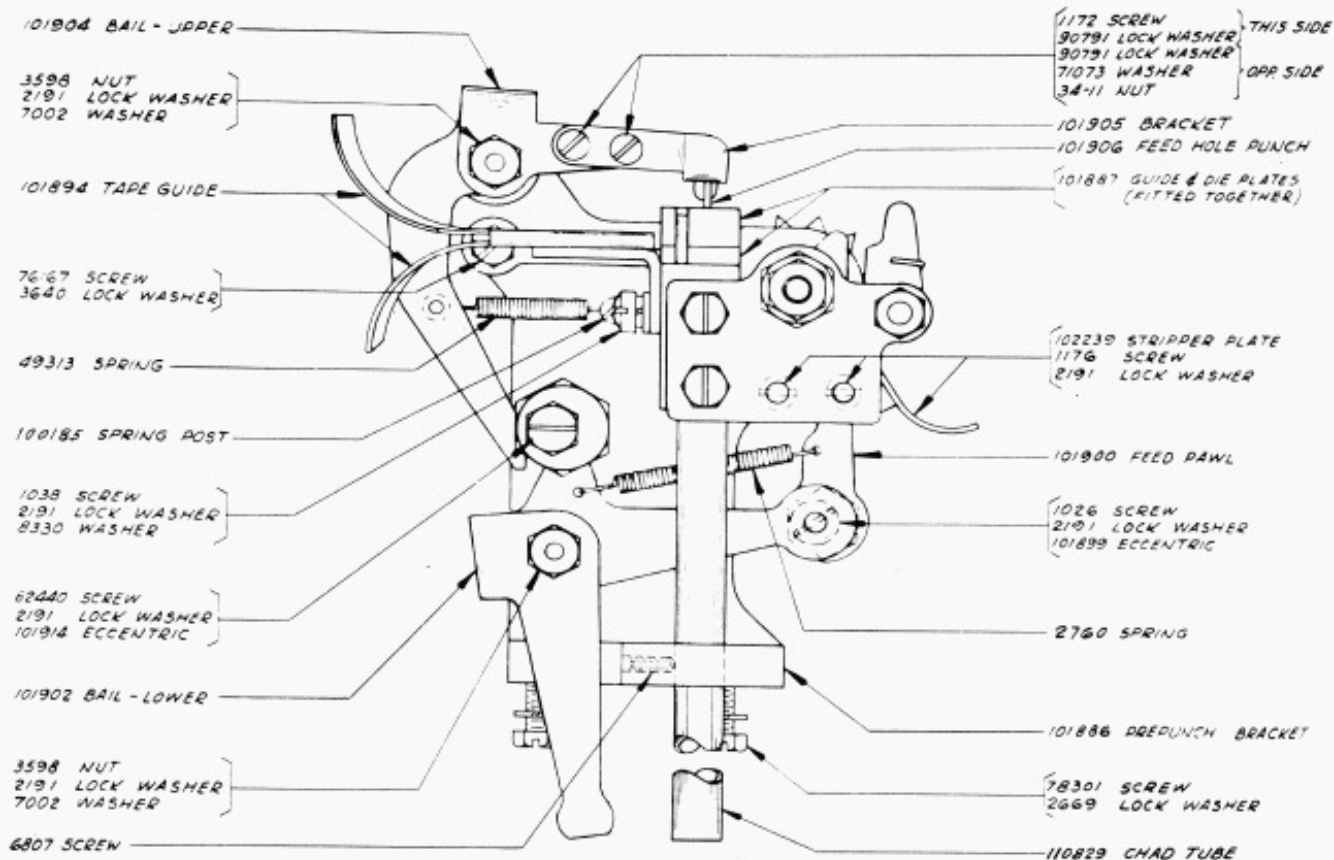


SELECTOR UNIT
(TOP VIEW)

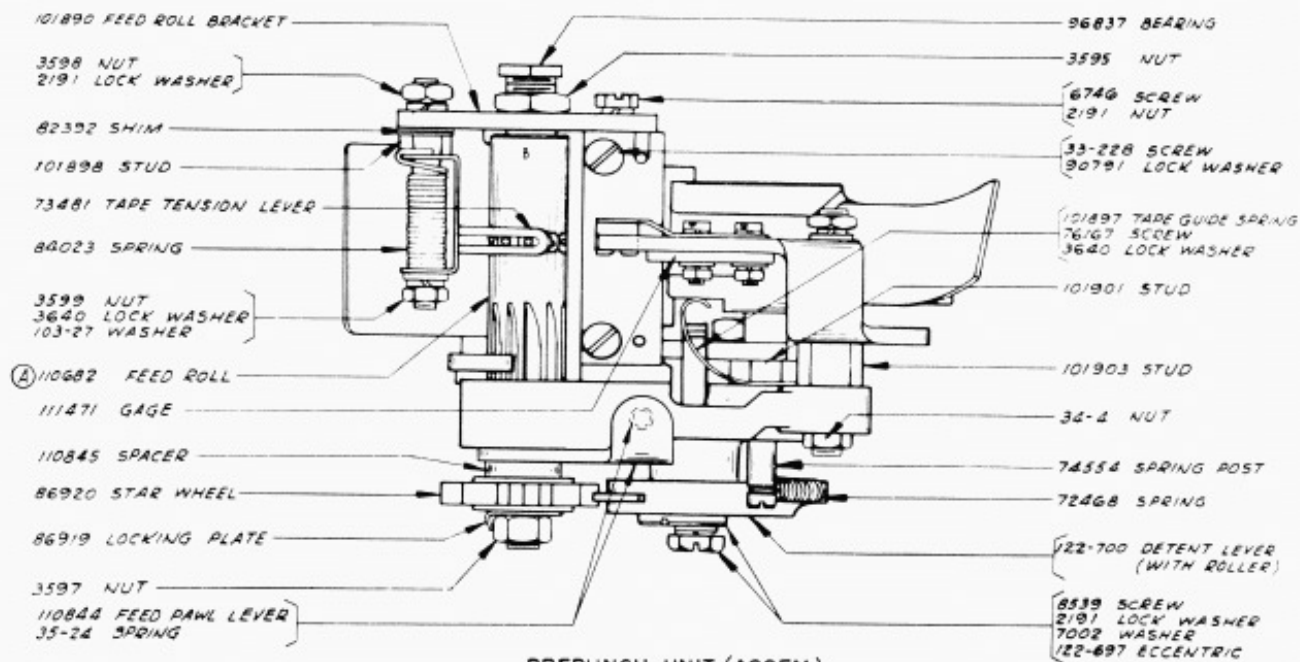
UNLESS OTHERWISE SPECIFIED
ALL PARTS SHOWN ON THIS PAGE
ARE COMMON TO FRXD 1, 5, 9 & 10



ALL PARTS SHOWN ON THIS PAGE
ARE COMMON TO FRXD1,5,9 & 10



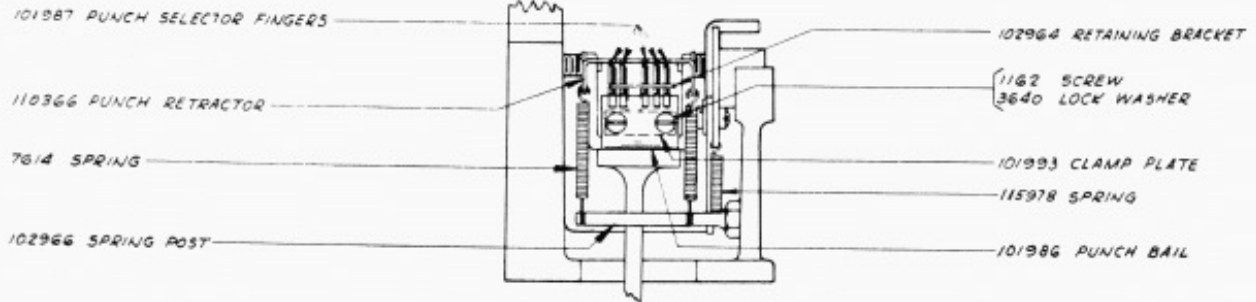
(REAR VIEW)



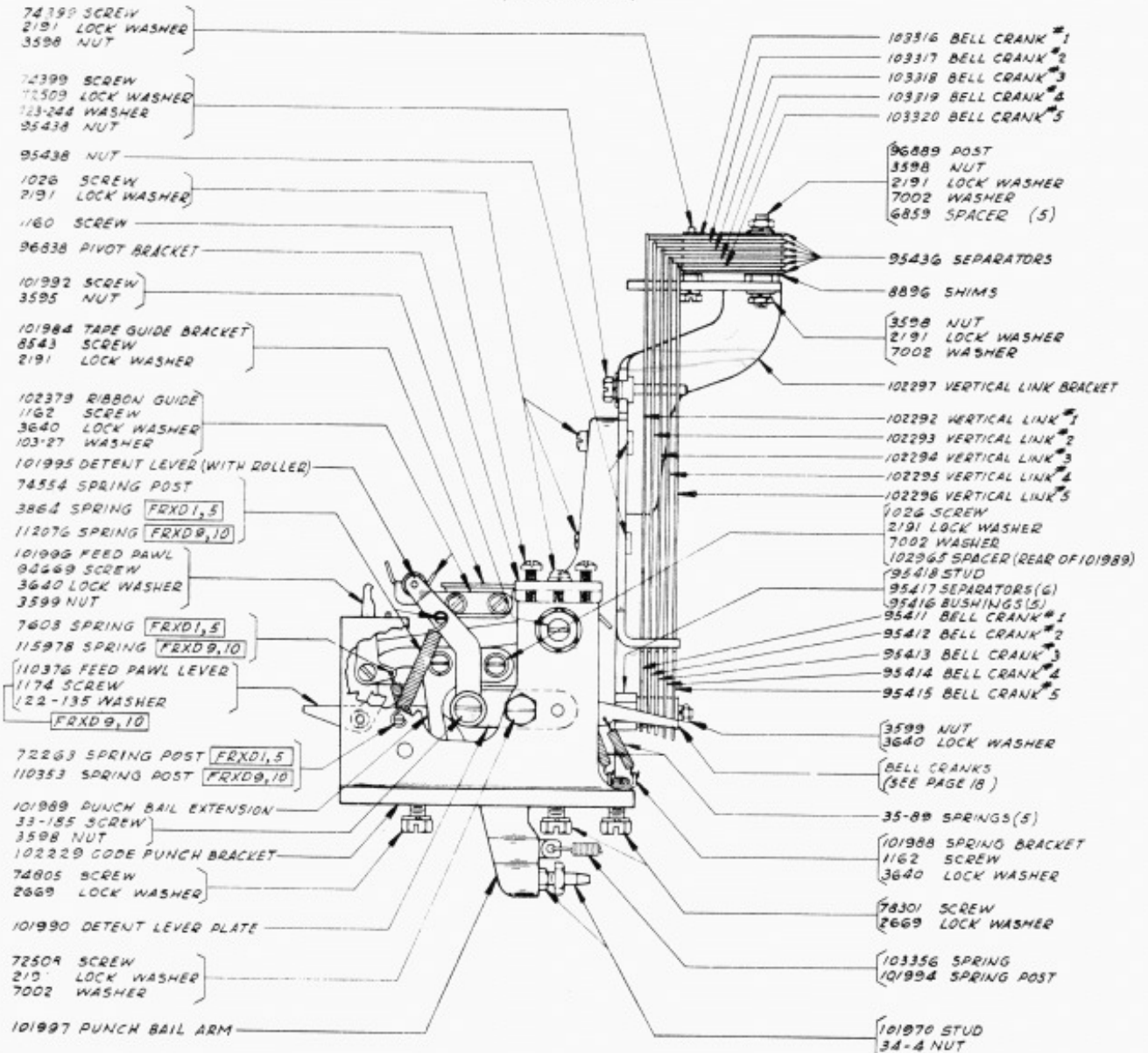
PREPUNCH UNIT (ASSEM)
(TOP VIEW)

Ⓐ THE 110682 FEED ROLL REPLACES 122-577 FEED ROLL AND 81598 SPACER.

ALL PARTS SHOWN ON THIS PAGE ARE COMMON TO FRXD1, 5, 9 & 10



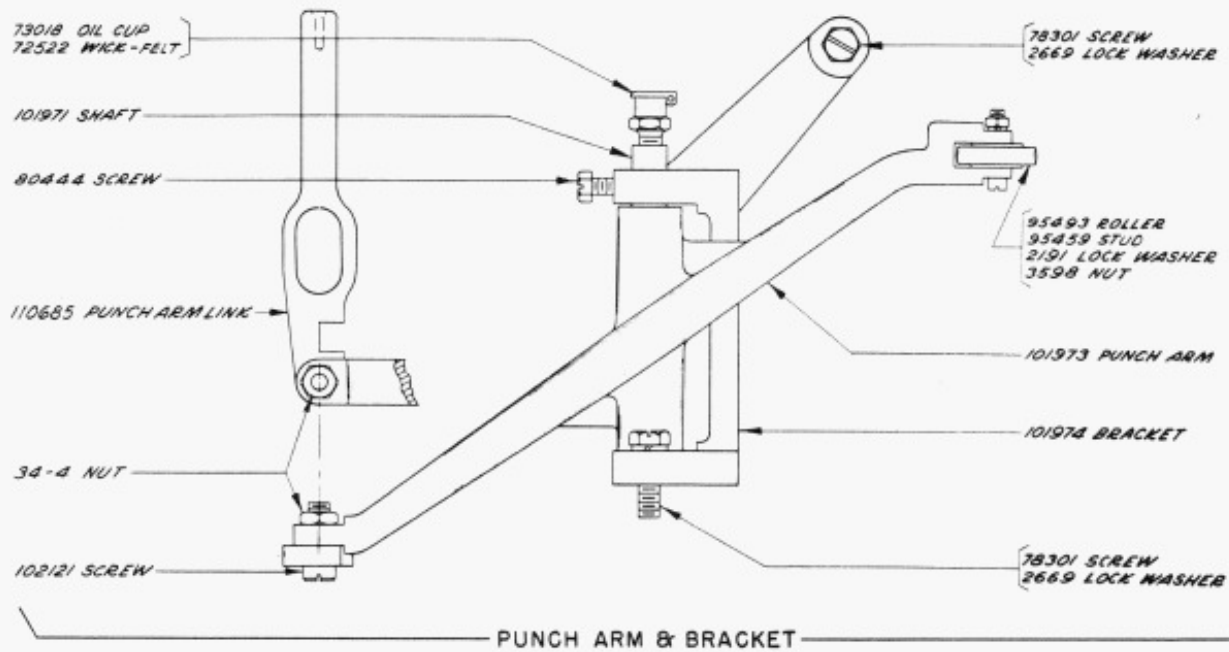
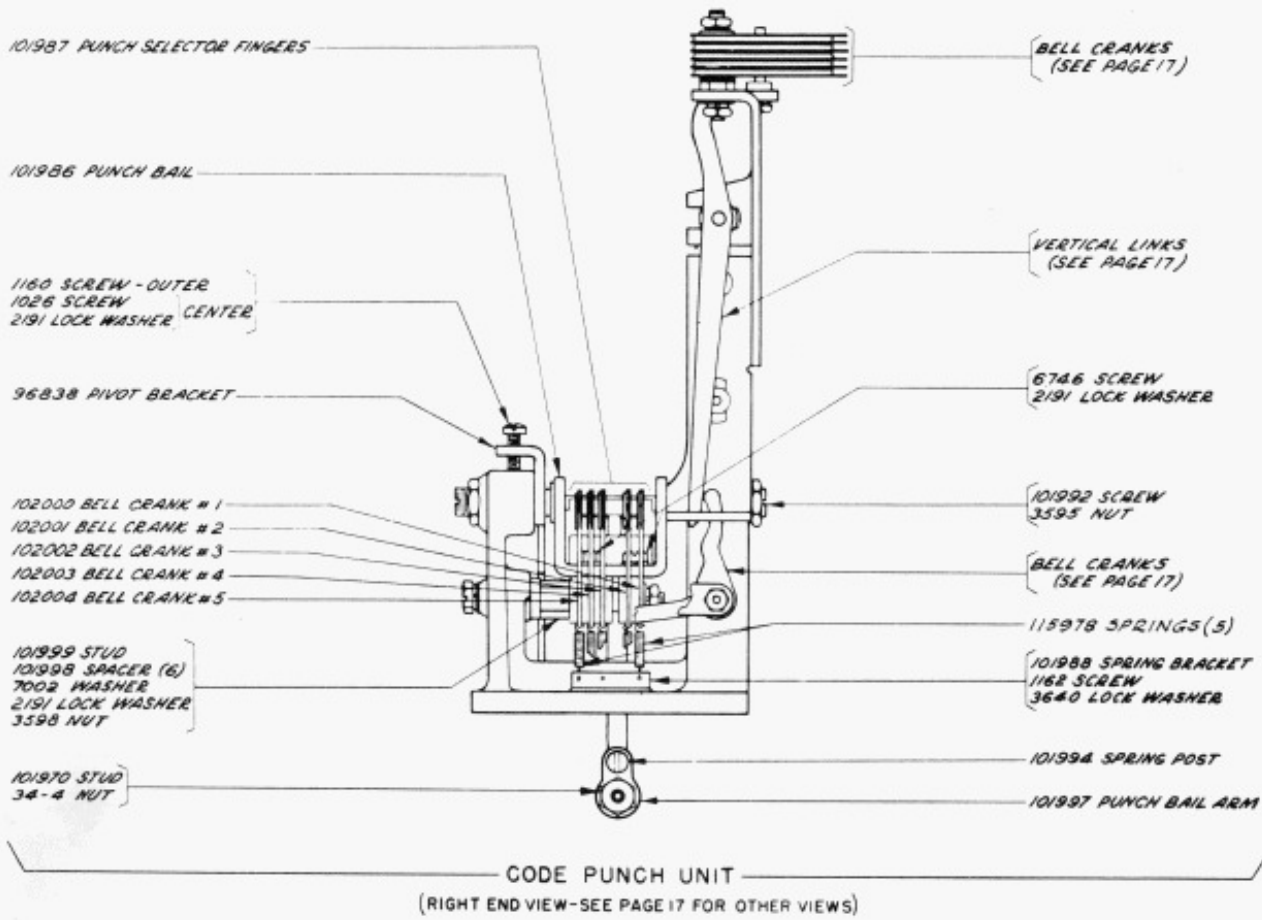
(LEFT END VIEW)



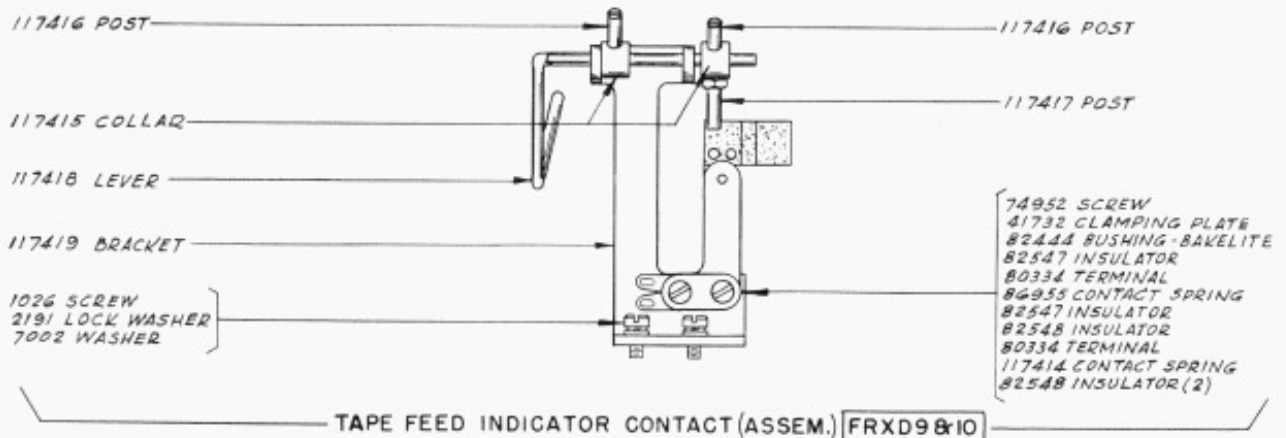
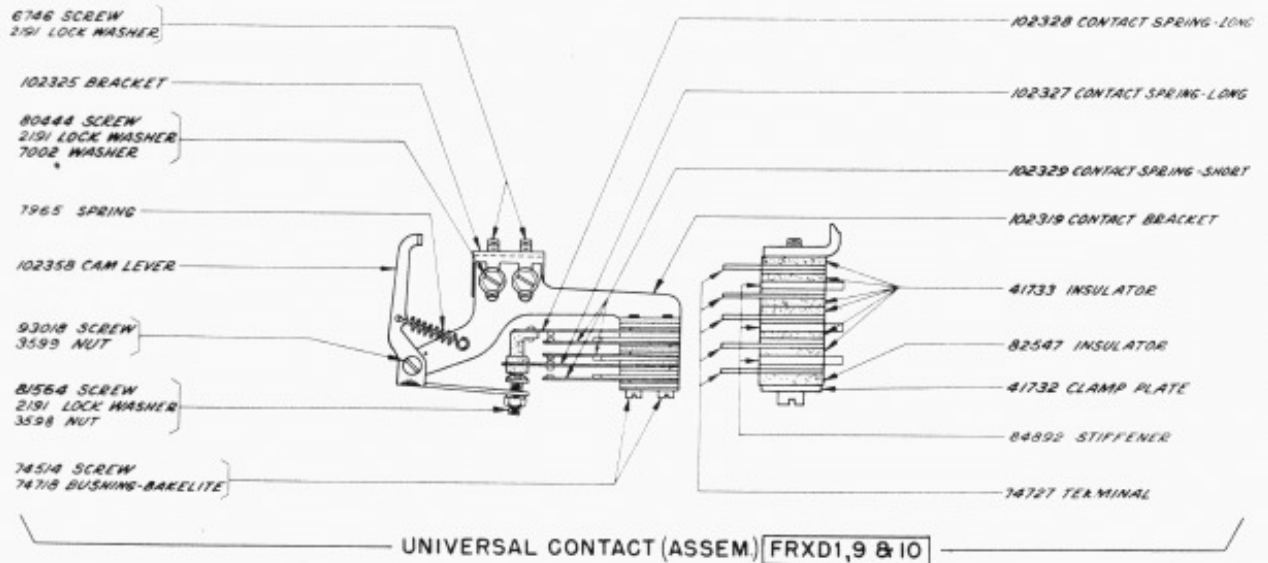
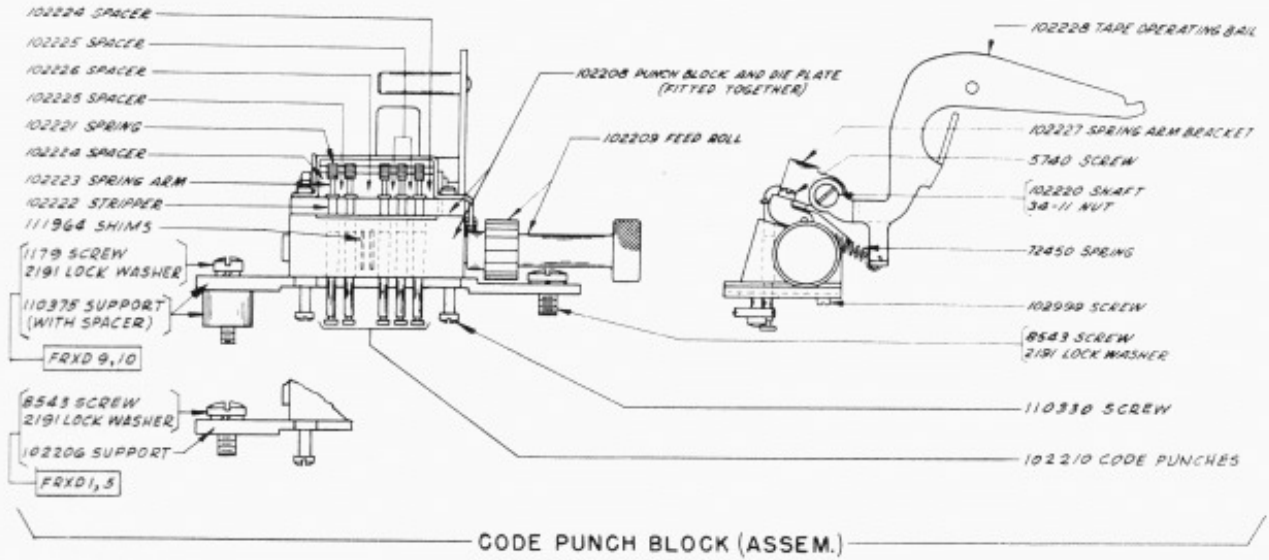
CODE PUNCH UNIT

(FRONT VIEW - SEE PAGE 18 FOR RIGHT END VIEW)

UNLESS OTHERWISE SPECIFIED
ALL PARTS SHOWN ON THIS PAGE
ARE COMMON TO FRXD1,5,9 & 10

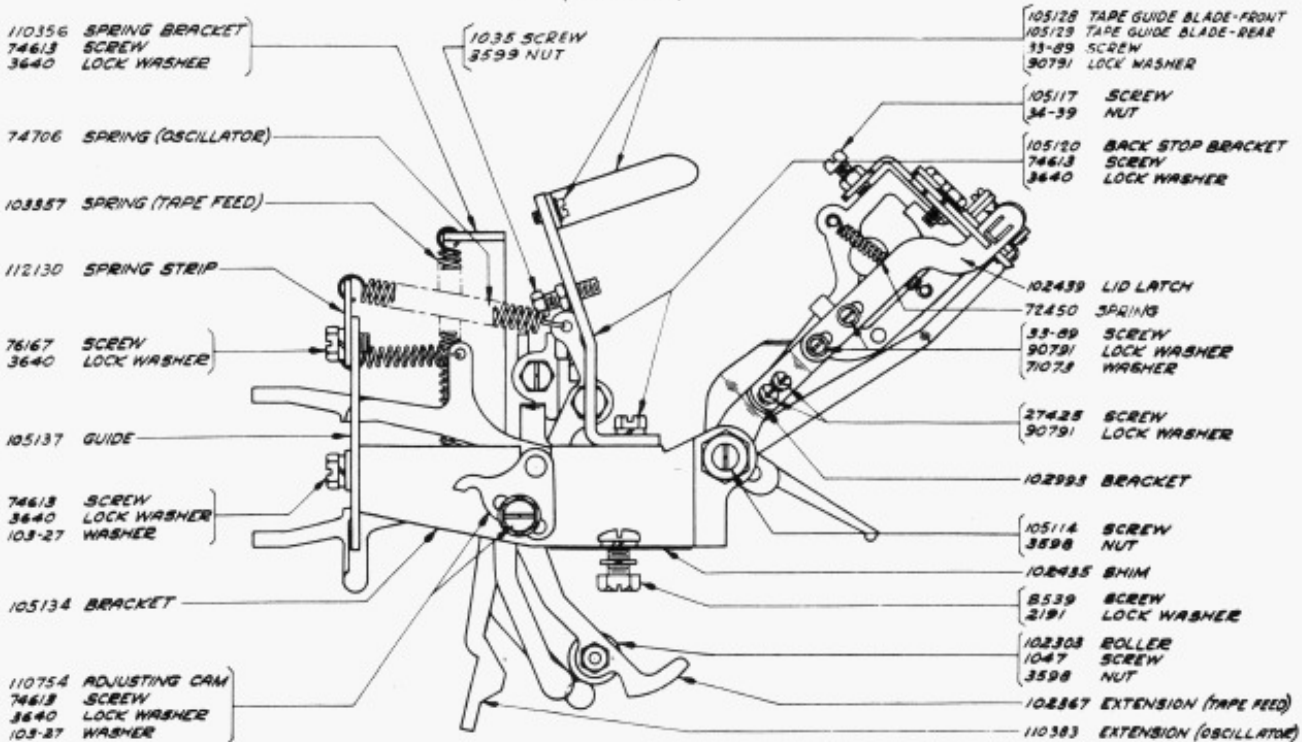
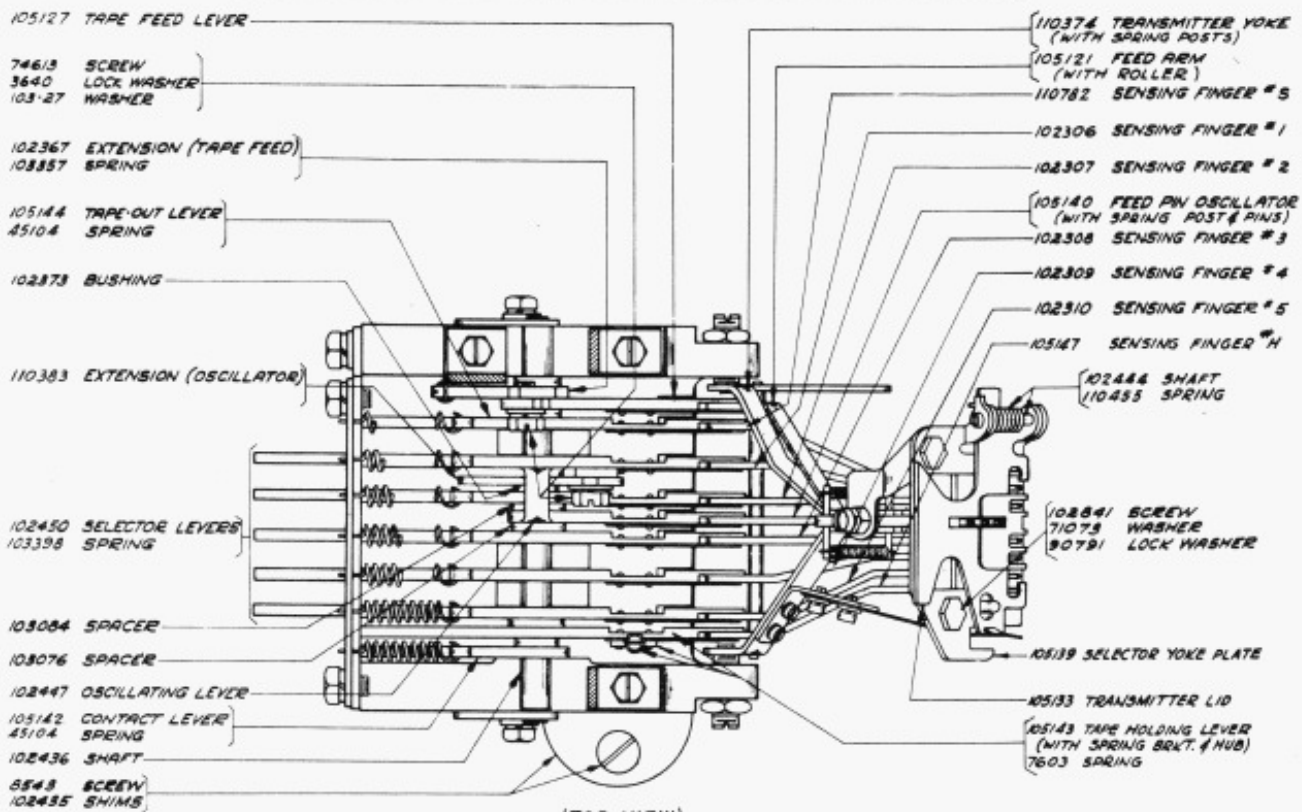


ALL PARTS SHOWN ON THIS PAGE
ARE COMMON TO FRXD1,5,9 & 10



UNLESS OTHERWISE SPECIFIED
ALL PARTS SHOWN ON THIS PAGE
ARE COMMON TO FRXD1,5,9 & 10

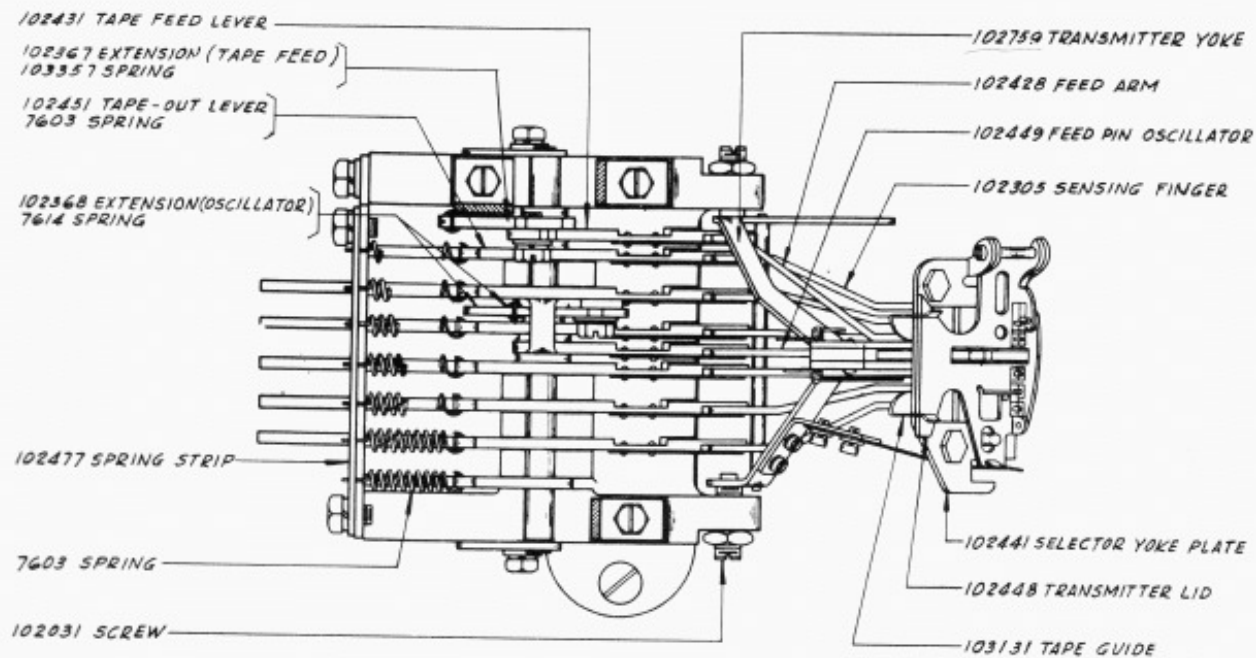
➔ NEW STYLE ASSEMBLY-SEE OPPOSITE PAGE FOR OLD STYLE



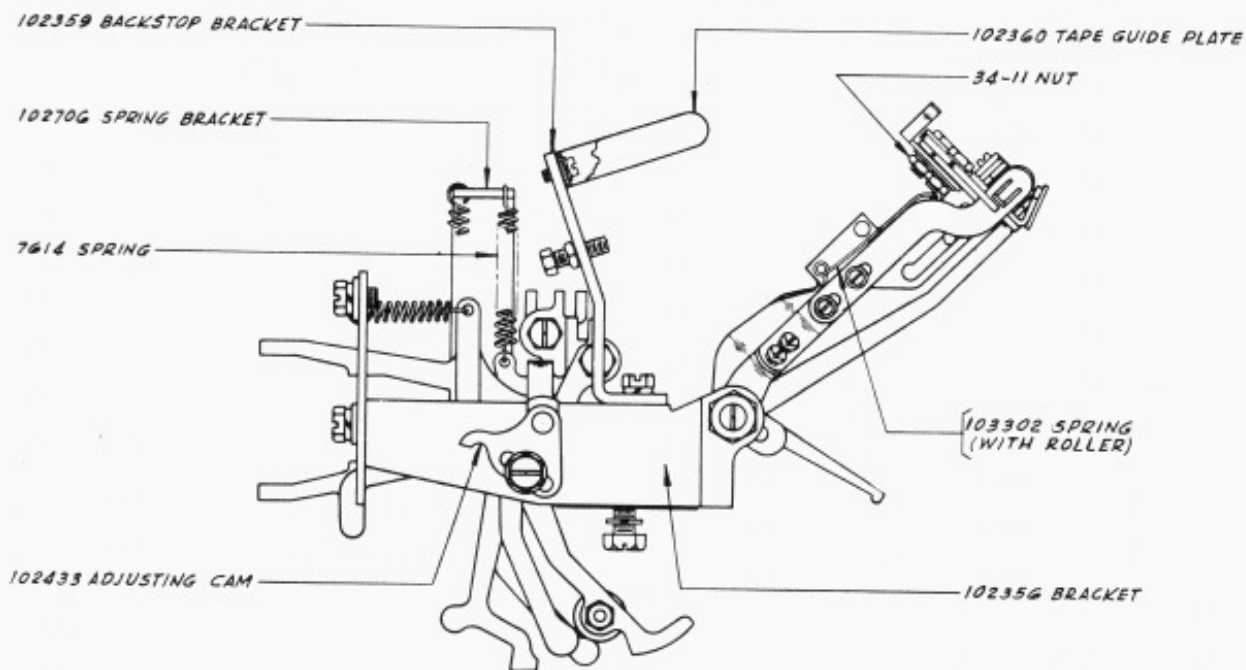
PIVOTED TRANSMITTER (ASSEM.)
(FRONT VIEW)

ALL PARTS SHOWN ON THIS PAGE
ARE COMMON TO FRXD9 & 10

OLD STYLE ASSEMBLY - SEE OPPOSITE PAGE FOR NEW STYLE



(TOP VIEW)



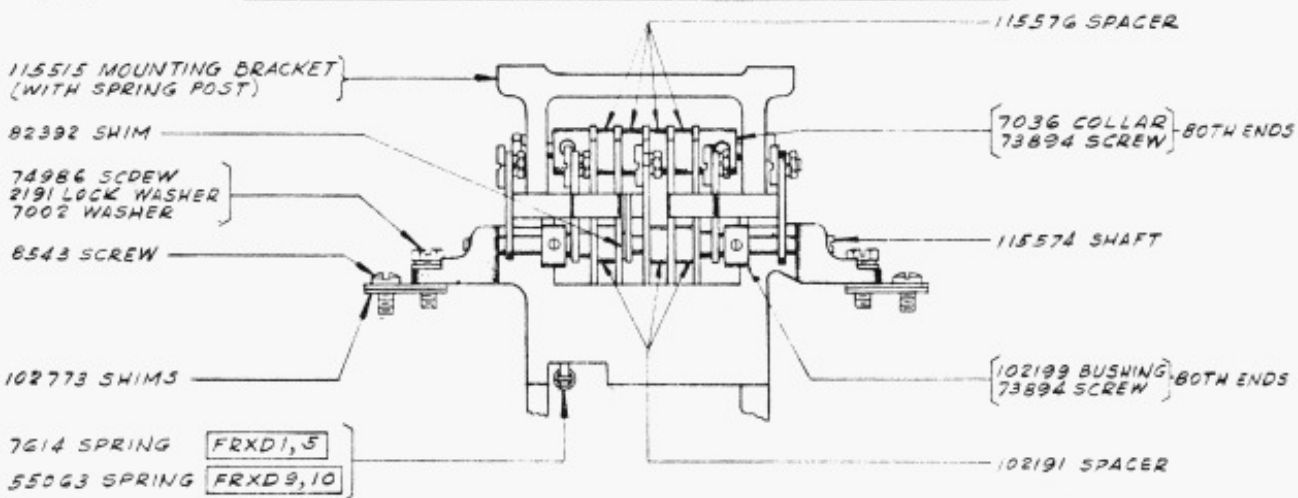
PIVOTED TRANSMITTER (ASSEM.)

(FRONT VIEW)

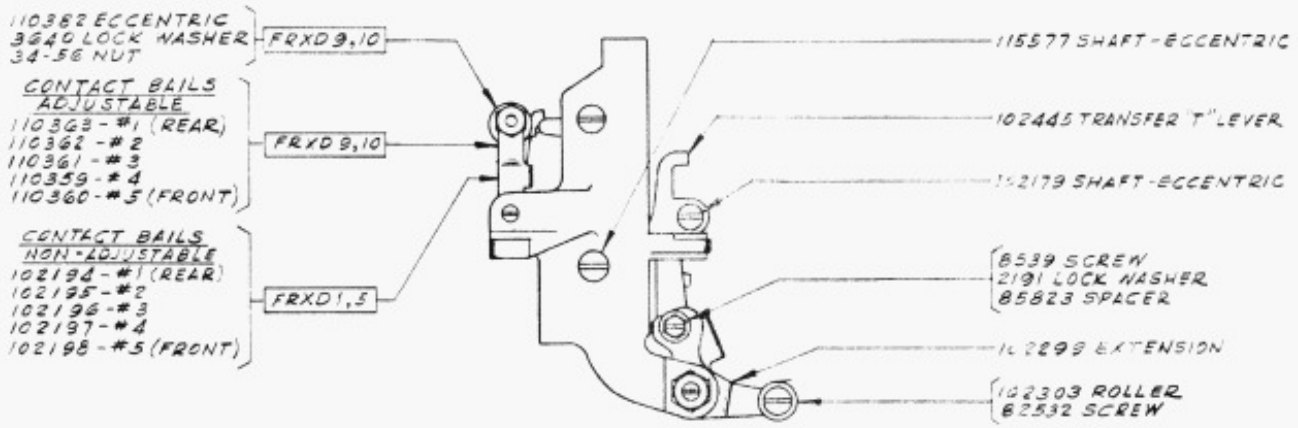
PARTS NOT LISTED SAME AS ON NEW STYLE ASSEMBLY

ALL PARTS SHOWN ON THIS PAGE
ARE COMMON TO FRXD1 & 5

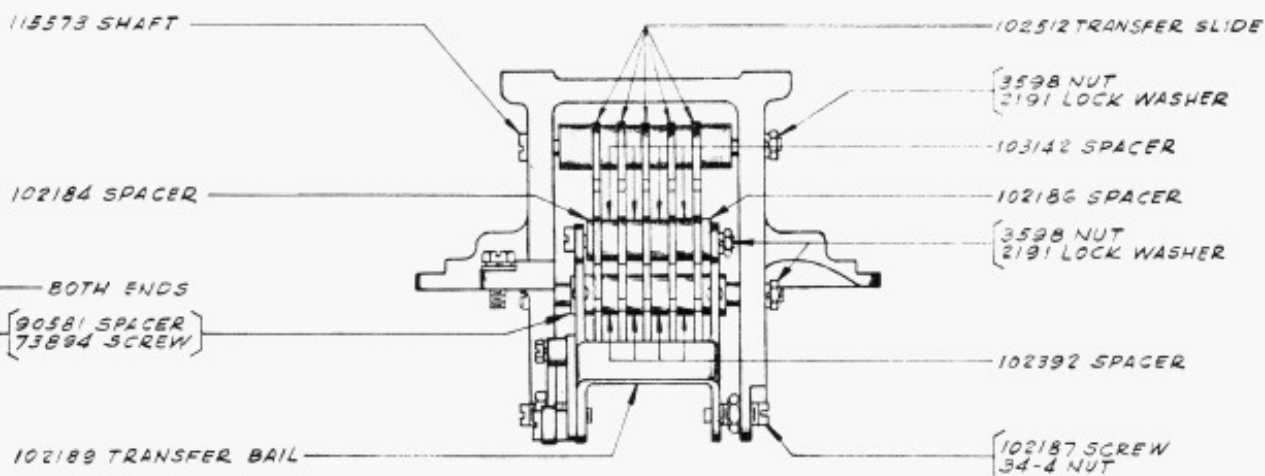
NEW STYLE ASSEMBLY- SEE OPPOSITE PAGE FOR OLD STYLE



LEFT END VIEW



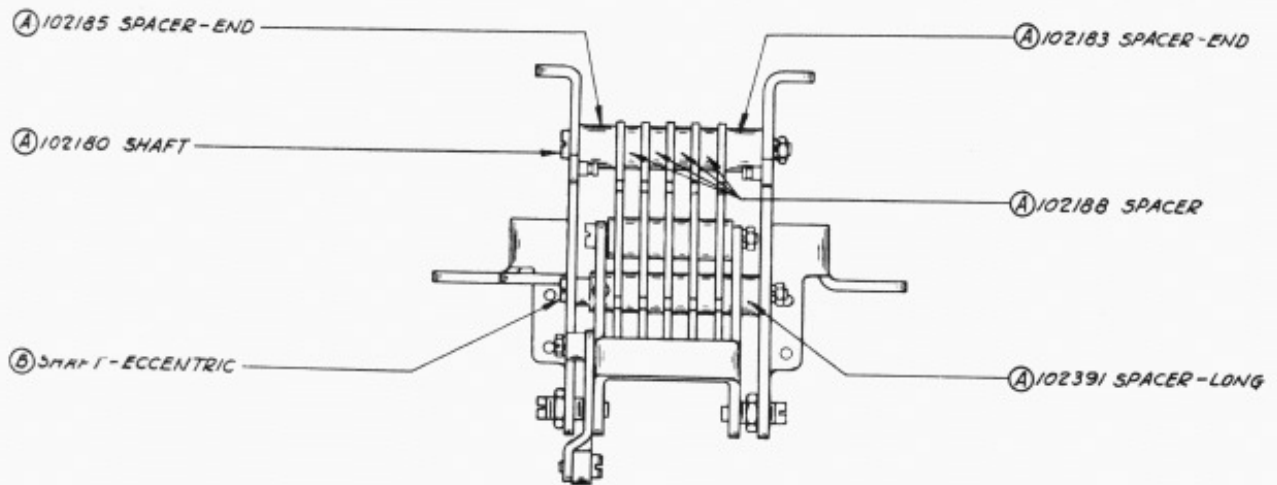
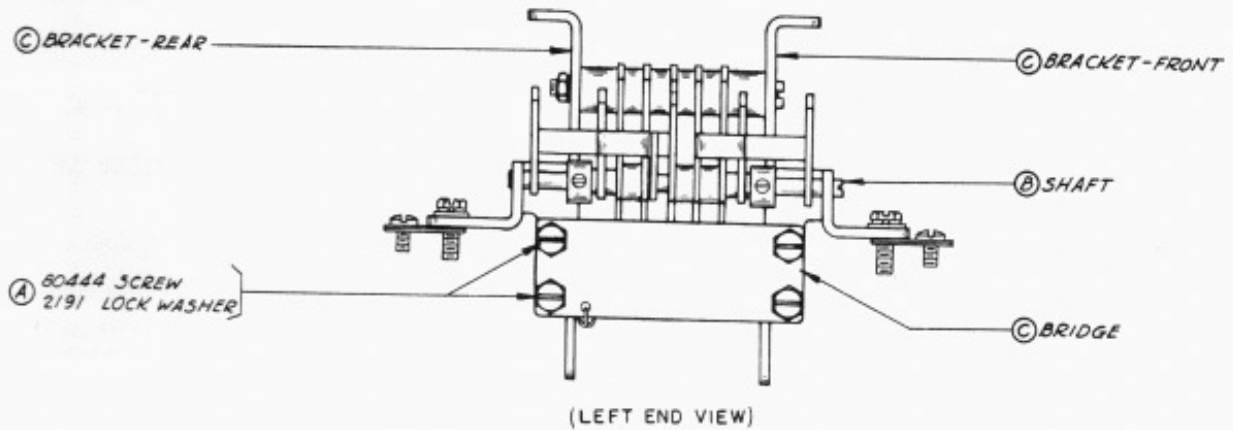
FRONT VIEW



TRANSFER BAIL & SLIDE (ASSEM.)
RIGHT END VIEW

UNLESS OTHERWISE SPECIFIED
ALL PARTS SHOWN ON THIS PAGE
ARE COMMON TO FRXD1,5,9 & 10

OLD STYLE ASSEMBLY - SEE OPPOSITE PAGE FOR NEW STYLE



TRANSFER BAIL & SLIDE (ASSEM.)
(RIGHT END VIEW)

PARTS NOT LISTED SAME AS ON NEW STYLE ASSEMBLY

- (A) OLD STYLE PARTS STILL AVAILABLE FOR USE ON OLD STYLE ASSEMBLIES.
- (B) OLD STYLE PARTS NO LONGER AVAILABLE. ON ORDERS FOR ANY OF THESE PARTS, NEW STYLE PARTS WHICH ARE INTERCHANGEABLE WITH THE OLD STYLE WILL BE SUPPLIED.
- (C) OLD STYLE PARTS NO LONGER AVAILABLE. WHEN ANY ONE OF THESE PARTS ARE REQUIRED FOR USE ON AN OLD STYLE ASSEMBLY THE FOLLOWING PARTS SHOULD BE ORDERED INSTEAD:

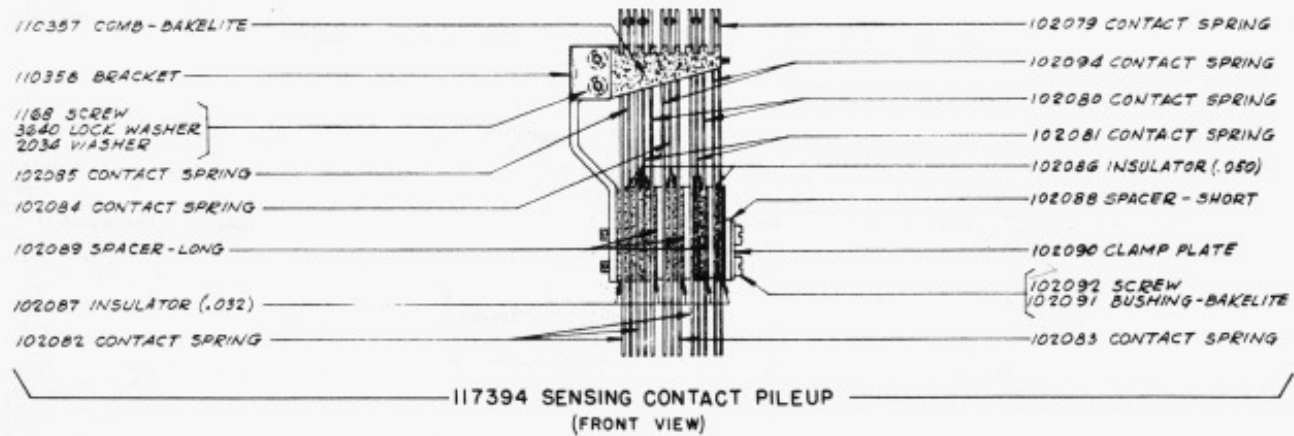
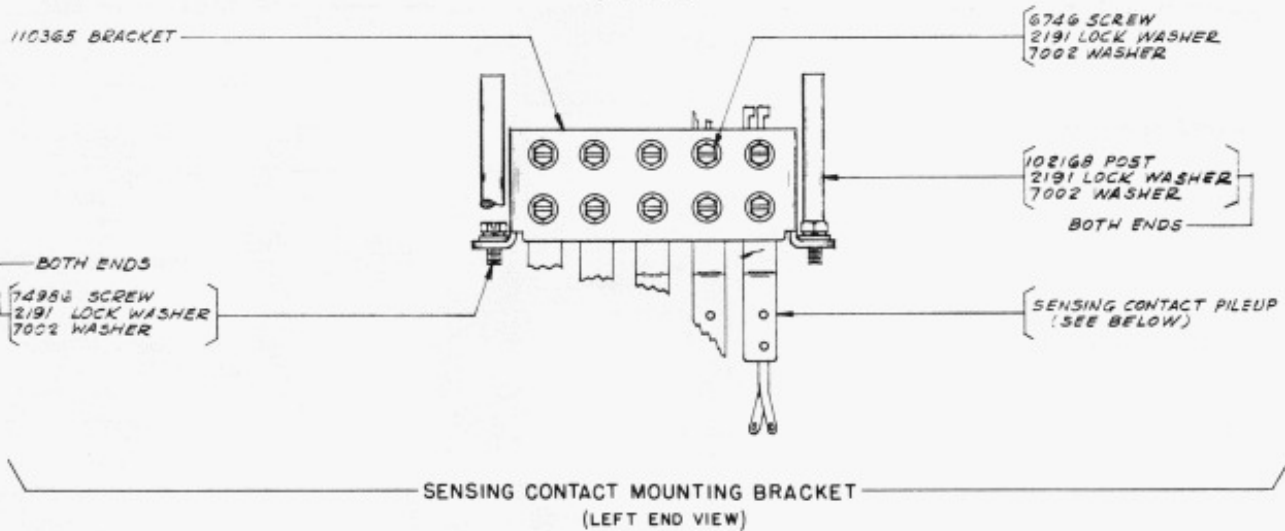
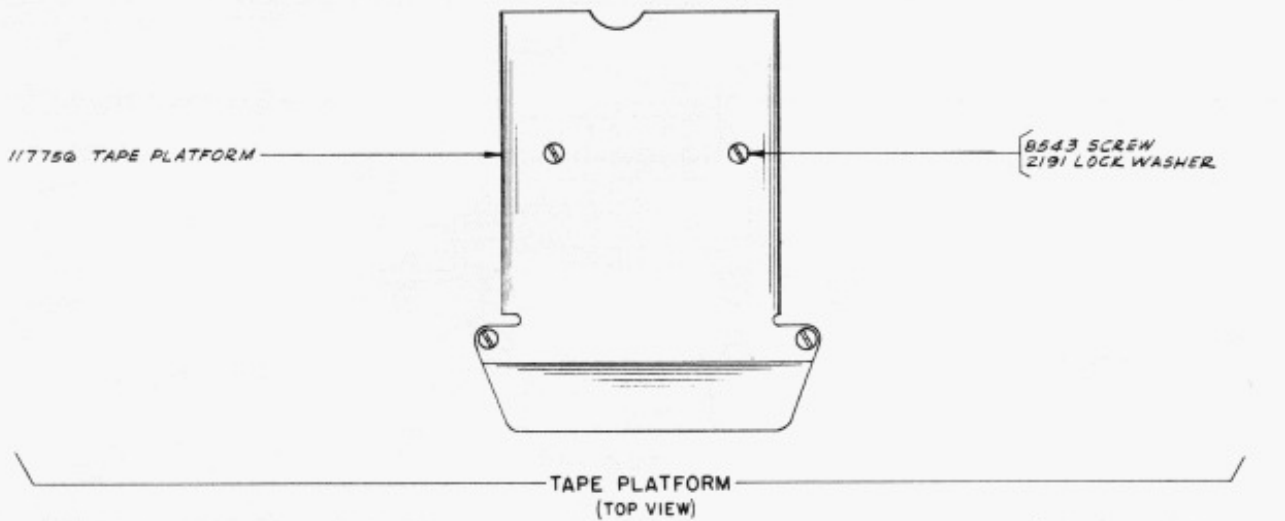
11551 MOUNTING BRACKET ---1
703G COLLAR -----2
73894 SCREW -----2
11557G SPACER -----4
115573 SHAFT -----1
115574 SHAFT -----1
115577 SHAFT-ECCENTRIC-1

SEE PAGE 22 FOR PARTS

11753 GUARD-FRONT-----1
11754 GUARD-REAR-----1
SEE PAGE 25 FOR PARTS

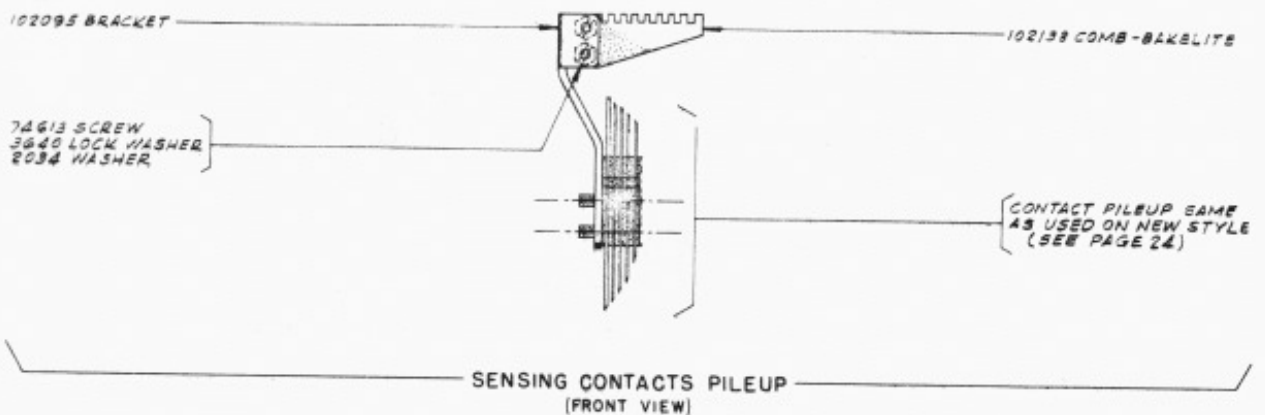
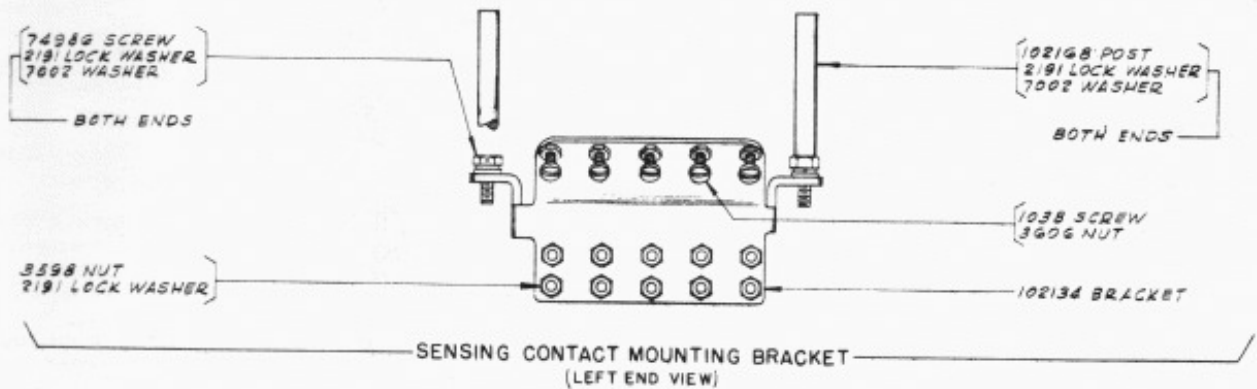
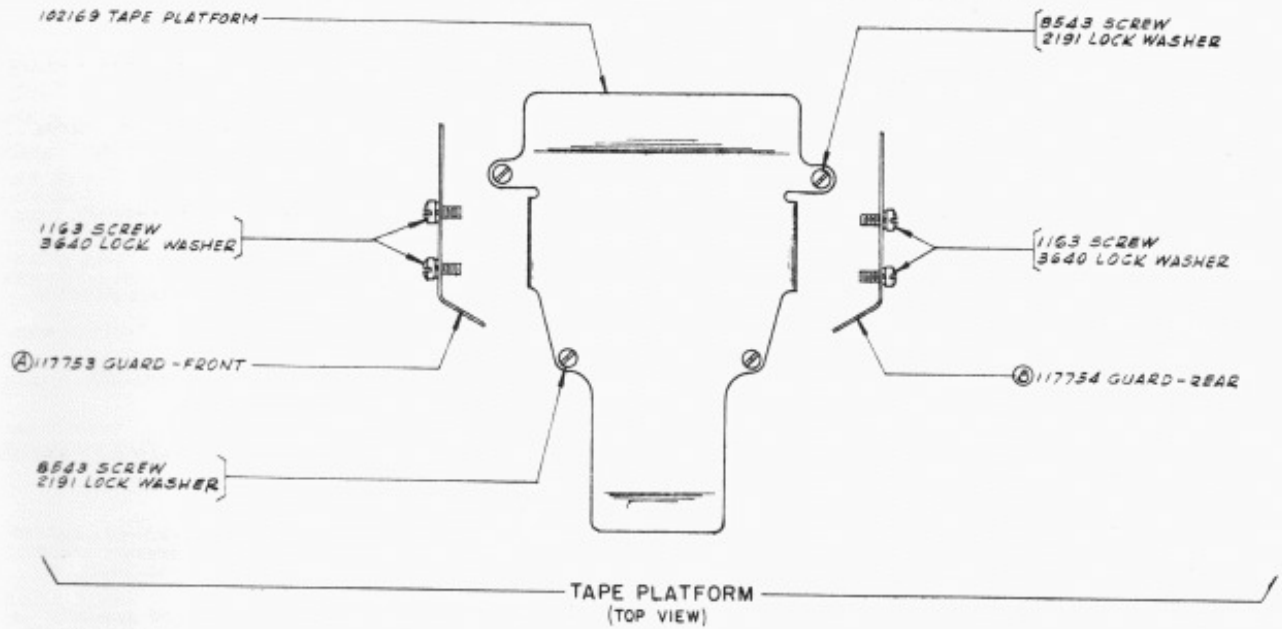


NEW STYLE PARTS - SEE OPPOSITE PAGE FOR OLD STYLE PARTS



ALL PARTS SHOWN ON THIS PAGE
ARE COMMON TO FRXD9 & 10

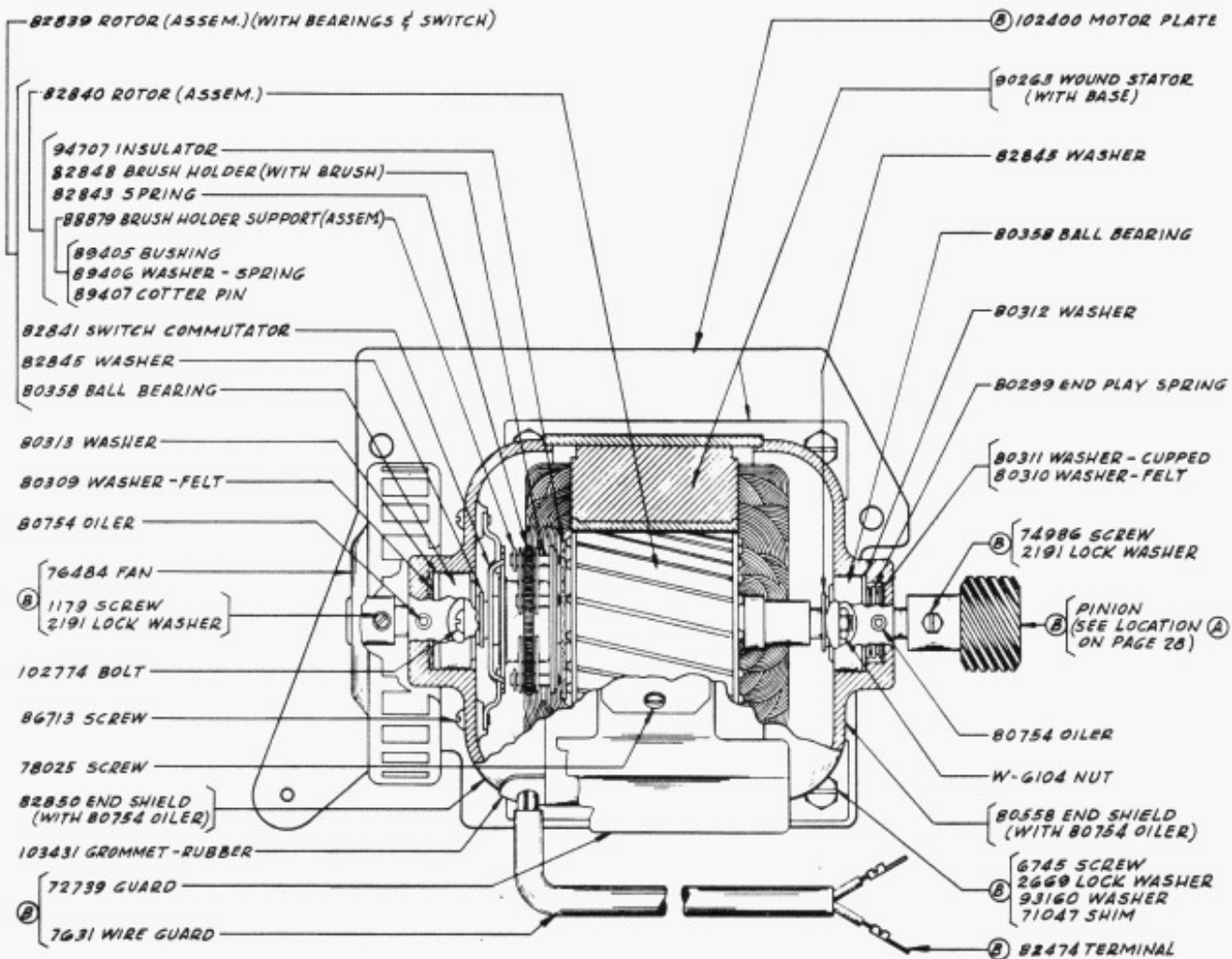
OLD STYLE PARTS-SEE OPPOSITE PAGE FOR NEW STYLE PARTS



- A 117753 REPLACES, AND IS INTERCHANGEABLE WITH 102165.
- B 117754 REPLACES, AND IS INTERCHANGEABLE WITH 102166.

ALL PARTS SHOWN ON THIS PAGE
ARE COMMON TO FRXD1 & 5

NEW STYLE MOTOR-SEE OPPOSITE PAGE FOR OLD STYLE



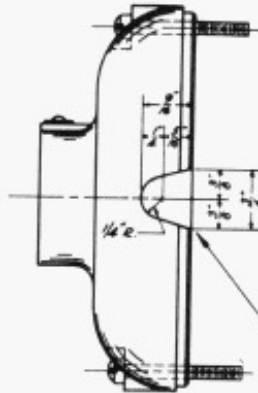
82283 SYNCHRONOUS MOTOR, 1/40 H.P., 110 V., 60 CYCLE A.C. (G.E. MODEL 5SH25AB11B)
(DOES NOT INCLUDE PARTS MARKED (B))

SETS OF MOTOR AND GEAR PARTS
(INCLUDES THE 82283 MOTOR AND PARTS MARKED (B))

102845	- FOR 460 O.P.M. RECEIVING & 460 O.P.M. SENDING (ARRANGEMENT "EL")
102846	- " 368 " " " 460 " " (" "EM")
102847	- " 460 " " " 368 " " (" "EN")
102848	- " 368 " " " 368 " " (" "EP")

SEE CHART ON PAGE 28 FOR GEARS & PINION INCLUDED WITH EACH SET

OLD STYLE MOTOR - SEE OPPOSITE PAGE FOR NEW STYLE

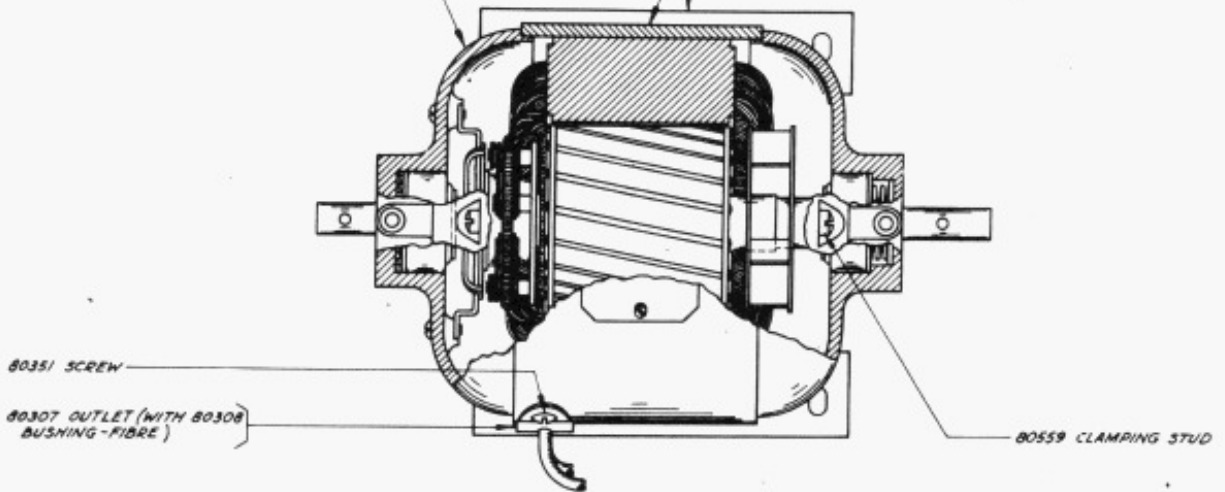


OLD STYLE 82850 END SHIELDS MAY BE WORKED OVER FOR USE WITH NEW STYLE MOTORS BY ADDING WIRE OUTLET HOLE AS ILLUSTRATED.

82850 END SHIELD - HAS BEEN REDESIGNED BUT RETAINS ITS ORIGINAL PART NUMBER. THE NEW STYLE END SHIELD (WITH WIRE OUTLET HOLE) CAN ALSO BE USED ON THE OLD STYLE MOTORS. THE OLD STYLE END SHIELD (WITHOUT WIRE OUTLET HOLE) CANNOT BE USED ON NEW STYLE MOTORS UNLESS IT BE WORKED OVER AS ILLUSTRATED ABOVE.

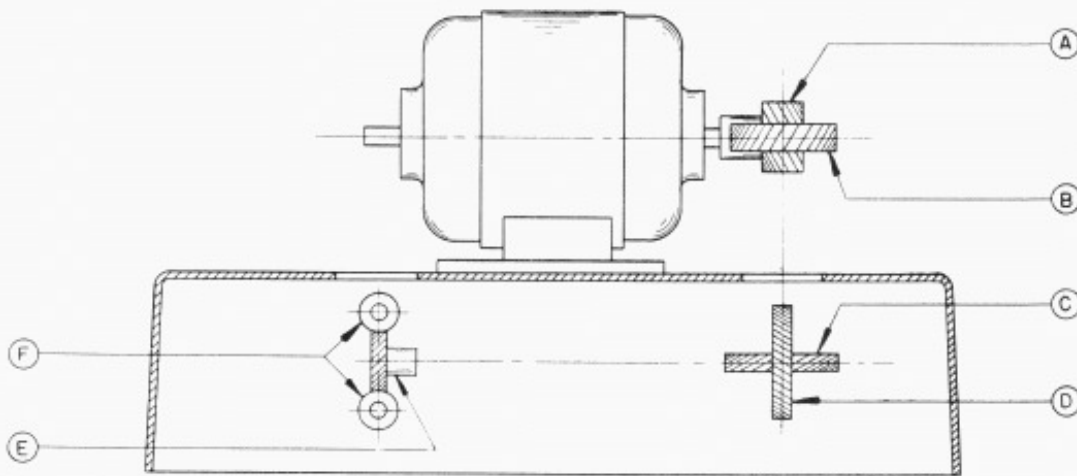
90263 WOUND STATOR (WITH BASE) - HAS BEEN REDESIGNED BUT RETAINS ITS ORIGINAL PART NUMBER. WHEN REPLACING AN OLD STYLE STATOR (WITH TAPPED HOLES FOR THE END SHIELD CLAMPING STUDS) WITH A NEW STYLE STATOR (WITH BODY HOLES FOR THE END SHIELD BOLTS) THE FOLLOWING NEW STYLE PARTS SHOULD BE ORDERED:

- | | |
|-------------------------------------|---|
| 90263 WOUND STATOR (WITH BASE)..... | 1 |
| 82850 END SHIELD..... | 1 |
| (OR WORK OVER OLD STYLE END SHIELD) | |
| 10343/1 GROMMET - RUBBER..... | 1 |
| 10274 BOLT..... | 2 |
| W-6104 NUT..... | 2 |



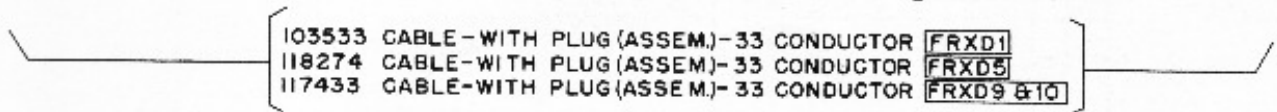
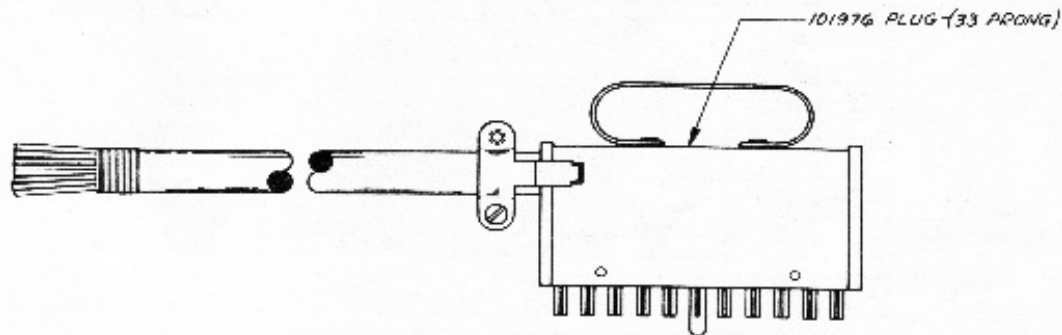
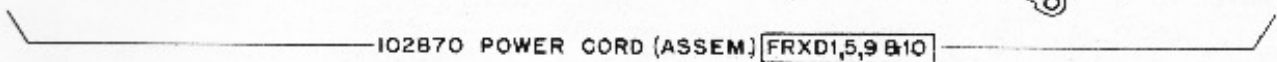
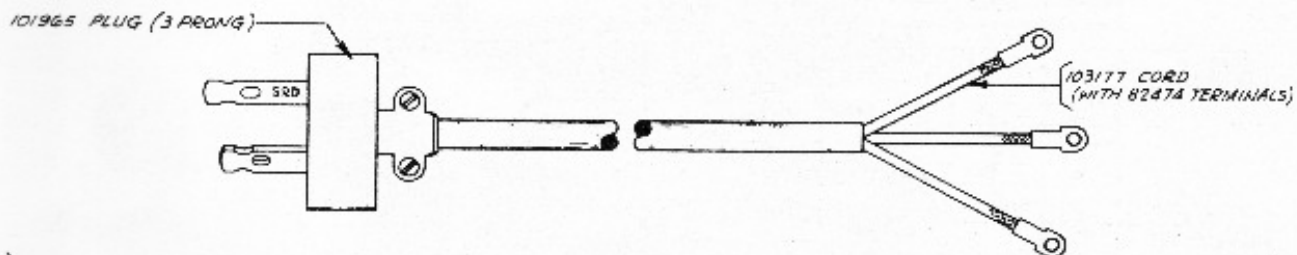
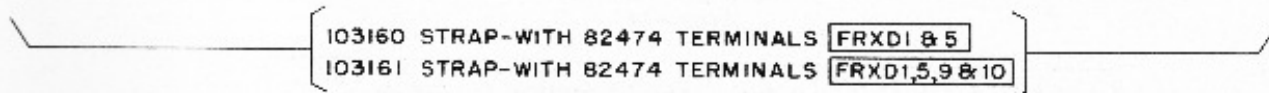
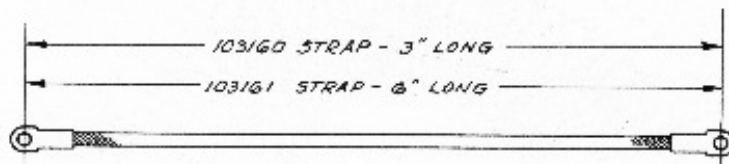
82283 SYNCHRONOUS MOTOR, 1/40 H.P., 110 V., 60 CYCLE A.C. (G.E. MODEL 5SH25AB11)

PARTS NOT LISTED SAME AS ON NEW STYLE MOTOR



CROSS SECTION THRU BASE
SHOWING LOCATION OF PINION AND GEARS
(SEE CHART BELOW FOR PART NUMBERS)

MOTOR, PINION & GEAR CHART									
SPEED (O.P.M.)		MOTOR	LOCATION AND PART NUMBER OF PINION & GEARS						SET OF MOTOR, PINION & GEAR PARTS
			(A)	(B)	(C)	(D)	(E)	(F)	
RECEIVING	SENDING		PINION PART NO.	GEAR PART NO.	GEAR PART NO.	GEAR PART NO.	GEAR PART NO.	GEAR PART NO.	
368	368	82283 (SYN)	78510 (7T)	78509 (30T)	102041 (30T)	102042 (28T)	102012 (18T)	102013 (22T)	102848 (ARR'GT."EP")
368	460	82283 (SYN)	78510 (7T)	78509 (30T)	102039 (30T)	102040 (47T)	102010 (24T)	102011 (14T)	102846 (ARR'GT."EM")
460	368	82283 (SYN)	94267 (7T)	88945 (24T)	102037 (36T)	102038 (42T)	102012 (18T)	102013 (22T)	102847 (ARR'GT."EN")
460	460	82283 (SYN)	94267 (7T)	88945 (24T)	102035 (24T)	102036 (47T)	102010 (24T)	102011 (14T)	102845 (ARR'GT."EL")

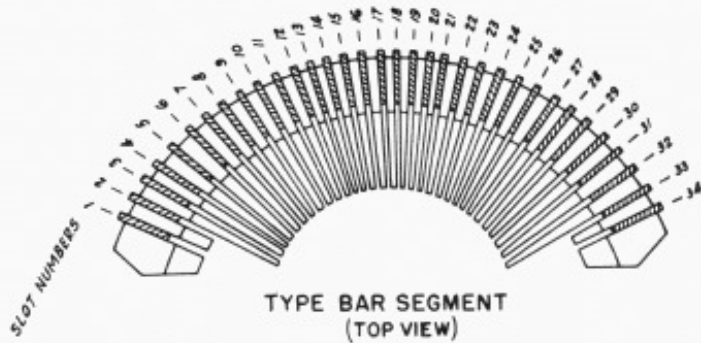


CABLES

- 103117 - POWER **FRXD1,5,9,10**
- 117432 - BASE **FRXD9,10**
- 117144 PULL BAR CONTACTS **FRXD9**

WIRING DIAGRAMS

- FRXD1 - W.D. - 2060
- FRXD5 - W.D. - 2364
- FRXD9 - W.D. - 2496
- FRXD10 - W.D. - 2496



TYPE BAR SEGMENT
(TOP VIEW)

SLOT NUMBER IN SEGMENT	PULL & FUNCTION BAR		TYPE BAR WITHOUT PALLET		TYPE PALLETS (ARRANGEMENT "20")		TYPE BAR WITH PALLET	PULL & FUNCTION BAR SPRING
	CATALOG NUMBER	DESCRIPTION	CATALOG NUMBER	NUMBER STAMPED ON BAR	CATALOG NUMBER	DESCRIPTION		
	1	6916	SPACE					7965
FRXD1,9	2	101723	LTRS.(CONT.)	101728	00	101580	W V	99030 / 7634
FRXD5,10	2	104104	LTRS.(ST'D.)	101728	00	101580	W V	99030 / 7634
		OPEN						
	4	74185	STANDARD	7421	1	101578	S Q	99031 / 7634
	5	74185	"	7422	2	98941	X /	98968 / 7634
	6	74185	"	7423	3	98915	Q J	98969 / 7634
	7	74185	STANDARD	7424	4	98936	V 34	98972 / 7634
FRXD1,9	8	99460	CONTACT	7425	5	98919	G &	98974 / 7634
FRXD5,10	8	74185	STANDARD	7425	5	98919	G &	98974 / 7634
	9	74185	"	7426	6	98916	W 2	98975 / 7634
	10	74185	"	7427	7	98935	F 14	98978 / 7634
	11	74185	"	7428	8	98934	C 18	98982 / 7634
	12	74185	"	7429	9	98943	D 8	98984 / 7634
	13	74185	"	7430	10	98928	R 4	98985 / 7634
	14	74185	"	7431	11	98908	J 9	98988 / 7634
	15	74185	"	7432	12	98912	A -	98991 / 7634
	16	74185	"	7433	13	98931	T 5	98992 / 7634
	17	74185	"	7434	14	98930	E 3	98993 / 7634
	18	74185	"	7435	15	98940	N 78	98996 / 7634
	19	74185	"	7436	16	98917	I 8	98998 / 7634
	20	74185	"	7437	17	98933	O 9	98999 / 7634
FRXD1,9	21	99460	CONTACT	7438	18	98924	H #	99002 / 7634
FRXD5,10	21	74185	STANDARD	7438	18	98924	H #	99002 / 7634
	22	74185	"	7439	19	98939	L 34	99005 / 7634
	23	74185	"	7440	20	98932	U 7	99006 / 7634
	24	74185	"	7441	21	98904	M 6	99007 / 7634
	25	74185	"	7442	22	98929	Y 6	99010 / 7634
	26	74185	"	7443	23	98918	P 0	99011 / 7634
	27	74185	"	7444	24	98938	B 58	99014 / 7634
	28	74185	STANDARD	7445	25	98937	K 12	99017 / 7634
FRXD1,9	29	99460	CONTACT	7446	26	98903	Z 88	99019 / 7634
FRXD5,10	29	74185	STANDARD	7446	26	98903	Z 88	99019 / 7634
	30	74185	"	7447	27	101582	< <	99032 / 7634
	31	74185	"	7448	28	101583	= =	99033 / 7634
	32	74185	"	7449	29	101579		99034 / 7634
FRXD1,9	33	101724	FIG.(CONT.)	102298	30	101581	^ ^	99035 / 7634
FRXD5,10	33	98531	FIG.(ST'D.)	102298	30	101581	^ ^	99035 / 7634
	34	103310	103310 12 YEAR					3610

UNLESS OTHERWISE SPECIFIED
ALL PARTS SHOWN ON THIS PAGE
ARE COMMON TO FRXD1,5,9 & 10

NUMERICAL INDEX

M-190	Magnet Coil - 1020 Ohms, 6	3606	Nut (6-40 Hex.), 3, 9, 10,	7042	Bevel Gear - 36T, 9
M-207	Magnet Coil - 92 Ohms, 14		14, 25	7044	Arm, 9
W-6104	Nut (.164-36 Hex.), 26, 27	3610	Spring, 11, 30	7067	Collar, 8
33-89	Screw (2-56 x 7/64), 20	3640	Lock Washer, 1, 4, 5, 6,	7068	Bevel Gear - 36T, 8
33-111	Screw (2-56 x 3/16), 10		7, 9, 15, 16, 17, 18, 20,	7070	Ribbon Feed Lever, 8
33-185	Screw (6-40 Shoulder), 17		22, 24, 25	7383	Oiler, 3
33-227	Screw (4-40 Shoulder), 15	3646	Lock Washer, 5	7391	Clutch - Driven, 3
33-228	Screw (2-56 x 3/8), 16	3864	Spring, 17		
34-1	Nut (1/4-32 Hex.), 13, 14	4502	Insulator, 4		
34-4	Nut (10-32 Hex.), 1, 8, 12,	4503	Clamping Plate, 4	7421	Type Bars (Without Pallets)
	16, 17, 18, 22	4708	Spring, 14		#1, 30
34-11	Nut (2-56 Hex.), 16, 19, 21	4809	Oil Wick - Felt (1-3/4"),	7422	#2, 30
34-39	Nut (4-48 Hex.), 20		12	7423	#3, 30
34-56	Nut (4-40 Hex.), 15, 22	4813	Oil Wick - Felt (1/4"), 12	7424	#4, 30
35-24	Spring, 16	4814	Lock Washer, 9	7425	#5, 30
35-27	Spring, 8	4842	Insulator, 4	7426	#6, 30
35-70	Spring, 7	5363	Spring, 9	7427	#7, 30
35-85	Spring, 6	5475	Nut (3/16-40 Hex.), 14	7428	#8, 30
35-89	Spring, 17	5740	Screw (2-56 x 1/4), 19	7429	#9, 30
46-3	Washer, 5	6685	Selector Sword, 14	7430	#10, 30
61-24	Washer - Fibre, 15	6686	"T" Lever, 14	7431	#11, 30
103-27	Washer, 4, 7, 16, 17, 20	6689	Separator Plate, 14	7432	#12, 30
122-102	Spring Eye, 8	6743	Operating Arm, 12	7433	#13, 30
122-135	Washer, 17	6745	Screw (10-32 x 1/2), 1, 2,	7434	#14, 30
122-697	Eccentric, 16		3, 4, 5, 6, 10, 12, 26	7435	#15, 30
122-700	Detent Lever (With Roller),	6746	Screw (6-40 x 5/16), 1, 2,	7436	#16, 30
	16		4, 5, 6, 7, 8, 10, 11, 12,	7437	#17, 30
123-37	Spring Post, 8		13, 14, 16, 18, 19, 24	7438	#18, 30
123-244	Washer, 5, 14, 17	6796	Screw (10-32 x 1/4), 8,	7439	#19, 30
200-1348	Washer, 8		10	7440	#20, 30
1026	Screw (6-40 x 3/8), 2, 16,	6799	Screw (6-40 x 27/32), 7,	7441	#21, 30
	17, 18, 19		15	7442	#22, 30
1028	Screw (4-40 x 1/4), 6	6800	Screw (6-40 Shoulder), 8,	7443	#23, 30
1030	Screw (6-40 Shoulder), 15		9, 12	7444	#24, 30
1035	Screw (4-40 x 3/8), 20	6801	Screw (4-40 Pilot), 15	7445	#25, 30
1038	Screw (6-40 x 9/32), 16, 25	6805	Screw (6-40 Shoulder), 9	7446	#26, 30
1047	Screw (6-40 Shoulder), 6, 20	6807	Screw (6-40 Special), 8,	7447	#27, 30
1073	Screw (6-40 Thumb), 15		9, 16	7448	#28, 30
1100	Screw (1/4-32 Pilot), 12	6810	Screw (10-32 x 3/8), 1, 2,	7484	Code Bar Post, 10
1159	Screw - Adjusting (4-40 x		13	7599	Spring, 8
	3/8), 7	6811	Screw (6-40 x 5/8), 8, 9,	7602	Spring, 15
1160	Screw (6-40 x 5/16), 4, 5,		12, 13, 14	7603	Spring, 15, 17, 20, 21
	7, 17, 18	6825	Spring Bracket - Long, 11	7607	Collar, 15
1161	Screw (6-40 x 1/4), 1	6826	Spring Bracket - Short, 11	7610	Main Shaft Bracket, 12
1162	Screw (4-40 x 1/4), 1, 4, 5,	6834	Ribbon Reverse Bail, 8	7614	Spring, 14, 17, 21, 22
	6, 17, 18	6843	Bracket, 8	7615	Spring, 13
1163	Screw (4-40 x 1/4), 25	6859	Spacer, 10, 17	7631	Wire Guard, 26
1168	Screw (4-40 x 5/16), 7	6861	Washer - Felt, 13	7634	Spring, 30
1169	Screw (6-40 x 7/16), 1	6863	Cam Sleeve Disc, 13	7654	Shim - .004" Thick, 6
1172	Screw (2-56 x 5/16), 16	6874	Roller, 12	7659	Spring, 8
1174	Screw (4-40 Shoulder), 15, 17	6909	Stop Pawl, 15	7824	Oil Wick - Felt, 13
1176	Screw (6-40 x 3/16), 5, 16	6916	Space Pull Bar, 11, 30	7835	Ribbon Spool (With Black
1179	Screw (6-40 x 5/8), 19, 26	6918	Link, 9		Ribbon), 9
1206	Screw (4-40 x 9/16), 4	6952	Plunger Sleeve, 8	7885	Type Bar - Without Pallet
1222	Screw (2-56 x 5/8), 4	6954	Strip - Leather, 10		(29), 30
1223	Screw (10-32 x 1/2), 8	6955	Backstop, 10	7965	Spring, 11, 19, 30
1245	Screw (10-32 x 1), 12	6965	Fulcrum Rod, 10	8157	Selector Lever - Right,
1269	Screw (6-40 x 1/2), 6, 7	6966	Eccentric Stop, 15		14
1297	Screw (6-40 Special), 5	6969	Main Bracket, 8	8158	Selector Lever - Left, 14
2034	Washer, 1, 11, 24, 25	6971	Clutch Lever, 13	8330	Washer, 1, 3, 16
2191	Lock Washer, 1-26	6972	Backstop (Assem.), 10	8449	Spacer, 7
2199	Nut (7/16 x 32 Hex.), 8	6985	Main Bail Lever (With	8493	Pawl, 8
2201	Nut (5/16 - 32 Hex.), 9		Spring Post), 12	8499	Shaft (With Ratchet and
2322	Lock Washer, 12	6986	Sleeve, 12		Detent), 8
2407	Lock Washer, 3	6987	Washer, 10	8539	Screw (6-40 x 1/2), 9, 13,
2422	Lock Washer, 4	6989	Spring Arm, 12		14, 16, 20, 22
2438	Washer - Brass, 6	6990	Screw (1/4 - 32 Pilot),	8543	Screw (6-40 x 1/4), 3, 4,
2449	Lock Washer, 3, 8		13, 14		17, 20, 22, 24, 25
2669	Lock Washer, 1, 2, 3, 4, 5,	6993	Spring, 13	8671	Screw (6-40 Shoulder), 4
	6, 8, 10, 12, 13, 14, 16,	7001	Washer, 10, 14	8896	Shims (.004), 6, 11, 17
	17, 18, 26	7002	Washer, 1-11, 13-19, 22,	27425	Screw (.086-56 x 5/32), 20
2760	Spring, 16		24, 25	31636	Spring, 7, 9, 15
2840	Spring Post, 13	7007	Trip Plunger, 15	34432	Washer, 6, 15
2920	Lock Washer, 8	7018	Bushing, 8	41732	Clamp Plate, 4, 6, 19
3154	Shaft, 12	7020	Plunger, 8	41733	Insulator, 4, 6, 19
3298	Eccentric, 1	7021	Bushing, 8	41974	Spring, 7
3329	Oil Cup, 12	7022	Reverse Lever - Right, 9	45104	Spring, 20
3438	Washer, 1, 6, 9, 10, 13	7023	Reverse Lever - Left, 9	49313	Spring, 16
3571	Bushing - Bakelite, 4	7024	Reverse Pawl - Right, 9	49420	Spring, 6
3595	Nut (1/4-32 Hex.), 3, 7,	7025	Reverse Pawl - Left, 9	55063	Spring, 22
	16, 18	7027	Roller, 8	55229	Screw (1-64 x 3/16), 11
3597	Nut (5/32-40 Hex.), 16	7029	Shaft, 8	69764	Shim (.016), 13
3598	Nut (6-40 Hex.), 4, 6, 7, 9,	7034	Bushing, 9	70073	Nut (3-48 Hex.), 8
	10, 11, 14, 15, 16, 17, 18,	7036	Collar, 9, 22, 23	70593	Oil Plug, 3
	19, 20, 22, 25	7037	Washer, 10	70793	Washer, 9
3599	Nut (4-40 Hex.), 7, 14, 15,	7038	Shaft - Lower, 9	70796	Ribbon Spool Cup, 9
	16, 17, 19, 20	7039	Collar, 9	70838	Bearing Brackets, 12
				70871	Spring Bracket - Right,
					9, 11

NUMERICAL INDEX

71047	Shim, 4, 10, 26	80299	End Play Spring, 26	90514	Screw (3/16 - 40 Pivot), 14
71073	Washer, 14, 16, 20	80307	Outlet (With 80308 Bushing-Fibre), 27	90515	Screw (3/16 - 40 Pivot), 14
71266	Washer, 9	80308	Bushing-Fibre, 27	90516	Selector Arm, 14
71681	Ribbon Spool - Empty, 9	80309	Washer - Felt, 26	90517	Spring, 14
71697	Clamping Plate, 15	80310	Washer - Felt, 26	90518	Locking Wedge, 14
71976	Stop Pawl Plate, 15	80311	Washer - Cupped, 26	90519	Screw (2-56 x 5/32), 14
72263	Spring Post, 17	80312	Washer, 26	90520	Armature Lever, 14
72450	Spring, 19, 20	80313	Washer, 26	90524	Screw (4-40 x 17/32), 14
72468	Spring, 16	80334	Terminal, 4, 19	90581	Spacer, 22
72508	Screw (6-40 x 3/4), 6, 17	80342	Screw (6-40 x 23/64), 8, 9	90752	Washer - Felt, 12
72509	Lock Washer, 17	80351	Screw (8-36 x 5/16), 27	90774	Bell Crank, 15
72513	Driving Disc, 13	80358	Ball Bearing, 26	90775	Range Scale (With Bell Crank Mounting), 15
72514	Spring, 13	80402	Screw (4-40 x 15/32), 6	90791	Lock Washer, 14, 16, 20
72515	Nut (5/16 - 32 Hex.), 13	80444	Screw (6-40 x 1/4), 2, 14, 18, 19, 23	90815	Resistor - 5000 ohms, 15
72517	Nut (5/16 - 32 Hex. -Keyed L. H.), 13	80471	Spring, 3	91120	Spring, 14
72521	Oil Wick - Felt, 13	80508	Screw (4-40 x 25/32), 11	91218	Selector Mounting Plate (With Posts), 14
72522	Oil Wick - Felt, 13, 18	80558	End Shield (With 80754 Oiler), 26	91265	Cam Sleeve, 13
72555	Screw (6-40 Set), 14	80559	Clamping Stud, 27	91266	Retaining Disc, 13
72562	Clutch - Driving, 13	80754	Oiler, 26	91683	Nut (15/32-32 Hex.) 15
72563	Washer - Felt, 13	81564	Screw (6-40 Special), 19	91684	Nut (15/32 - 32 Ring), 15
72644	Ball Bearing, 13	81726	Terminal, 6	91744	Screw (6-40 x 13/64), 2
72739	Guard, 26	81774	Washer - Brass, 2	91746	Terminal Block, 2
72883	Washer - Felt, 13	82283	Synchronous Motor, 1/40 H. P., 110 V., 60 Cycle A.C. (G. E. Model 5Sh25AB11) 26, 27, 28	91754	Guard, 15
72884	Disc, 13	82392	Shim, 16, 22	91753	Bracket, 15
72885	Spring, 13	82440	Screw (6-40 x 7/16), 1, 5, 7, 13, 14, 16	91755	Toggle Switch, 15
73018	Oil Cup, 3, 18	82444	Bushing - Bakelite, 4, 11, 19	91899	Type Bar Segment, 10
73107	Bushing, 13	82474	Terminal, 26	92204	Cable Clamp, 2
73427	Shim (.014), 11	82532	Screw (6-40 Shoulder), 22	92273	Magnet Core, 14
73481	Tape Tension Lever, 16	82547	Insulator, 19	93018	Screw (4-40 Shoulder), 19
73670	Terminal Block, (With 1028 Term. Screws and 3650 Washers - Brass), (6 Terminals), 2	82548	Insulator, 19	93160	Washer, 26
73894	Screw (6-40 Set), 9, 22, 23	82769	Cable Clamp, 2	94267	Pinion - 7T, 28
74006	Bushing, 8	82839	Rotor (Assem.) (With Bearings and Switch), 26	94665	Screw (6-40 Shoulder), 6
74008	Roller, 8	82840	Rotor (Assem.), 26	94669	Screw (4-40 Shoulder), 17
74014	Screw (10-32 x 3/4), 3	82841	Switch Commutator, 26	94707	Insulator, 26
74026	Spacer, 1	82843	Spring, 26	95065	Strap - Brass, 2
74059	Screw (6-40 x 7/32), 15	82845	Washer, 26	95411	Bell Crank #1, 17
74185	Pull Bar - Standard, 30	82848	Brush Holder (With Brush), 26	95412	Bell Crank #2, 17
74286	Ball Guide, 8	82850	End Shield (With 80754 Oiler), 26, 27	95413	Bell Crank #3, 17
74334	Washer (.035), 6, 8	83054	Condenser - 1 MF., 5	95414	Bell Crank #4, 17
74385	Gear - 30T, 9	83408	Screw (4-40 x 3/16), 1	95415	Bell Crank #5, 17
74399	Screw (6-40 Pilot), 14, 17	83856	Screw (4-40 x 11/16), 11	95416	Bushing, 17
74502	Clutch - Driven, 13	83920	Top Separator Plate, 14	95417	Separator, 17
74514	Screw (4-40 x 55/64), 19	84023	Spring, 16	95418	Stud, 17
74554	Spring Post, 16, 17	84233	Full Bar Stripper, 10	95436	Separator, 17
74613	Screw (4-40 x 1/4), 20, 25	84892	Stiffener, 19	95438	Nut (6-40 Special), 1 7
74706	Spring (Oscillator), 20	85318	Washer - Leather, 3	95459	Stud, 18
74717	Screw (4-40 x 11/16), 11	85389	Eccentric, 1	95461	Code Bars
74718	Bushing - Bakelite, 19	86713	Screw (4-48 x 5/16), 26	95462	#1J, 10
74722	Washer, 14	86915	Locking Plate, 16	95463	#2J, 10
74727	Terminal, 19	86920	Star Wheel, 16	95464	#3J, 10
74728	Terminal, 4	86955	Contact Spring, 19	95464	#4J, 10
74805	Screw (10-32 x 3/4), 17	88879	Brush Holder Support (assem.), 26	95465	#5J, 10
74952	Screw (4-40 x 5/8), 4, 19	88945	Gear - 24T, 28	95467	Reverse Arm - Right, 9
74965	Bushing - Bakelite, 4	89405	Bushing, 26	95473	Collar, 14
74969	Bushing, 9	89406	Washer - Spring, 26	95493	Roller, 18
74986	Screw (6-40 x 13/32), 2, 5, 10, 14, 15, 22, 24, 25, 26	89407	Cotter Pin, 26	95988	Plate, 11
75226	Wick - Felt, 8	89896	Oil Cup, 3	95989	Post, 10
75229	Spring, 9	89897	Nut (10-32 Hex.), 3	96763	Shim (.012), 13
75517	Pull Bar Guide, 10	90024	Retainer, 14	96765	Shim (.020), 13
75607	Shim (.010"), 6	90043	Armature Bracket, 14	96837	Bearing, 16
75750	Washer - Bakelite, 5	90043	Detent Post, 14	96838	Pivot Bracket, 17, 18
76167	Screw (4-40 x 3/16), 16, 20	90069	Trip Latch, 15	96889	Post, 17
76168	Screw (6-40 x 3/16), 10	90088	Screw (6-40 Shoulder), 7	97118	Mounting Plate, 11
76275	Clamp Plate, 8	90117	Wound Stator (With Base), 26, 27	97125	Contact Spring (Assem.), 11
76461	Spacer, 5	90265	Screw (6-40 Special), 14	97126	Contact Spring - Front, 11
76484	Fan, 26	90438	Button - Felt, 3	97127	Contact Spring - Rear, 11
76790	Bushing - Bakelite, 6	90505	Locking Lever, 14	97128	Extension, 11
77920	Screw (6-40 x 1-15/16), 15	90507	Top Plate, 14	97130	Contact Spring, 11
77955	Washer, 10	90508	Spring Arm, 14	97131	Contact Spring, 11
77999	Resistor (500 Ohms), 5	90509	Detent, 14	97132	Stiffener, 11
78025	Screw (4-48 x 3/16), 26	90510	Spring, 14	97133	Stiffener, 11
78029	Wick - Felt, 5	90511	Screw (6-40 x 13/16), 14	97135	Clamp Plate, 11
78163	Selector Post, 14	90512	Bracket, 14	97136	Bushing - Bakelite, 11
78164	Selector Post, 14	90513	Screw (6-40 Eccentric), 14	97137	Insulator (.047), 11
78244	Oil Cup, 8			97138	Insulator, 11
78301	Screw (10-32 x 5/8), 1, 2, 6, 8, 10, 12, 16, 17, 18			97139	Insulator, (.016), 11
78430	Cable Clamp, 2			97140	Contact Spring (Assem.), 11
78509	Gear - 30T, 28			97141	Terminal, 11
78510	Pinion - 7T, 28			97292	Link, 14
78596	Washer, 15			97293	Bracket, 15
78597	Screw (10-32 Shoulder), 15			97295	Cable (Series - Parallel Switch), 15
79494	Spacer, 9				

NUMERICAL INDEX

97317 Clamping Plate, 14
98150 Oiler - Felt, 8
98151 Clip, 8
98479 Guard, 10
98531 Function Bar - Figures
(Standard), 30
98583 Ball Bearing, 34
98646 Plate, 11

Type Bar Pallets

98903 (Z "),
98904 (M .),
98908 (J .),
98912 (A -),
98915 (Q 1),
98916 (W 2),
98917 (I 8),
98918 (P 0),
98919 (G &),
98924 (H #),
98928 (R 4),
98929 (Y 6),
98930 (E 3), 30
98931 (T 5),
98932 (U 7),
98933 (O 9),
98934 (C 1 8),
98935 (F 1 4),
98936 (V 3 8),
98937 (k 1 2),
98938 (B 5 8),
98939 (l 3 4),
98940 (N 7 8),
98941 (X 1),
98943 (D \$),

Type Bars (With Pallets)

98968 #2 (X /),
98969 #3 (Q 1),
98972 #4 (V 3 8),
98974 #5 (G &),
98975 #6 (W 2),
98978 #7 (F 1 4),
98982 #8 (C 1 8),
98984 #9 (D \$),
98985 #10 (R 4),
98988 #11 (J .),
98991 #12 (A -),
98992 #13 (T 5),
98993 #14 (E 3),
98996 #15 (N 7 8),
98998 #16 (I 8), 30
98999 #17 (O 9),
99002 #18 (H #),
99005 #19 (L 3 4),
99006 #20 (U 7),
99007 #21 (M .),
99010 #22 (Y 6),
99011 #23 (P 0),
99014 #24 (B 5 8),
99017 #25 (K 1 2),
99019 #26 (Z "),
99030 #00 (v *),
99031 #1 (S 0),
99032 #27 (< <),
99033 #28 (≡ ≡),
99034 #29 (≠ ≠),
99035 #30 (A A),
99337 Contact Spring, 11
99338 Contact Spring, 11
99339 Contact Spring - Front, 11
99340 Contact Spring - Rear, 11
99460 Full Bar - Contact, 30
100032 Spring Post, 2
100185 Spring Post, 16
100421 Bushing - Bakelite, 6
101083 Spring, 12
101436 Main Ball Can, 13
101578 Type Pallet (Sq), 30
101579 Type Pallet (R &), 30
101580 Type Pallet (vw), 30
101581 Type Pallet (AA), 30
101582 Type Pallet (<<), 30
101583 Type Pallet (≡≡), 30
101723 Function Bar - Letters
(Contact), 30
101724 Function Bar - Figures
(Contact), 30
101728 Type Bar - Without Pallet
#00, 30
101886 Prepunch Bracket, 16
101887 Guide & Die Plates (Fitted
Together), 16

101890 Feed Roll Bracket, 16
101894 Tape Guide, 16
101897 Tape Guide Spring, 16
101898 Stud, 16
101899 Eccentric, 16
101900 Feed Pawl, 16
101901 Stud, 16
101902 Bail - Lower, 16
101903 Stud, 16
101904 Bail - Upper, 16
101905 Bracket, 16
101906 Feed Hole Punch, 16
101908 Bracket - Left, 9
101909 Ribbon Shaft - Short, 9
101911 Ribbon Shaft - Long, 9
101912 Reverse Arm - Left, 9
101914 Eccentric, 16
101915 Ribbon Guide Bracket
(With Roller), 9
101965 Plug (3 Prong), 29
101970 Stud, 17, 18
101971 Shaft, 18
101973 Punch Arm, 18
101974 Bracket, 18
101984 Tape Guide Bracket, 17
101986 Punch Bail, 17, 18
101987 Punch Selector Fingers,
17, 18
101988 Spring Bracket, 17, 18
101989 Punch Bail Extension, 17
101990 Detent Lever Plate, 17
101992 Screw (1/4 - 32 Pilot),
17, 18
101993 Clamp Plate, 17
101994 Spring Post, 17, 18
101995 Detent Lever (With Roller)
17
101996 Feed Pawl, 17
101997 Punch Bail Arm, 17, 18
101998 Spacer, 18
101999 Stud, 18
102000 Bell Crank #1, 18
102001 Bell Crank #2, 18
102002 Bell Crank #3, 18
102003 Bell Crank #4, 18
102004 Bell Crank #5, 18
102010 Gear - 24T, 28
102011 Gear - 14T, 28
102012 Gear - 18T, 28
102013 Gear - 22T, 28
102020 Plunger, 6
102021 Lever Stud, 4
102022 Spacer, 13
102023 Bearing Bushing, 3
102025 Retaining Plate, 3, 4
102027 Spring Post, 4
102029 Gear Hub, 5
102031 Screw (6-40 Pilot), 21
102032 Shaft, 6
102033 Spacer - Long, 4
102034 Spacer - Short, 4
102035 Gear - 24T, 28
102036 Gear - 47T, 28
102037 Gear - 36T, 28
102038 Gear - 42T, 28
102039 Gear - 30T, 28
102040 Gear - 47T, 28
102041 Gear - 30T, 28
102042 Gear - 28T, 28
102045 Main Shaft (With Gear
Hub), 13
102056 Main Ball Plunger, 8
102058 Contact Lever, 4
102061 Yoke, 6
102063 Clutch Lever - Left, 6
102064 Clutch Lever - Right, 6
102074 Shaft Bracket - Rear, 3
102075 Bearing (With Bushing), 5
102076 Distributor Shaft Bracket
4
102079 Contact Spring, 24
102080 Contact Spring, 24
102081 Contact Spring, 24
102082 Contact Spring, 24
102083 Contact Spring, 24
102084 Contact Spring, 24
102085 Contact Spring, 24
102086 Insulator (.050), 24
102087 Insulator (.032), 24
102088 Spacer - Short, 24
102089 Spacer - Long, 24
102090 Clamp Plate, 24
102091 Bushing - Bakelite, 24
102092 Screw (6-40 x 1-9/16), 24
102094 Contact Spring, 24
102095 Bracket, 25
102196 Contact Bail, #3, 22
102197 Contact Bail, #4, 22
102198 Contact Bail, #5, 22
102102 Sensing Cam Sleeve, 3
102103 Distributor Cam Sleeve, 3
102118 Clutch - Driving, 3
102119 Clutch - Driving, 3
102121 Screw (10 - 32 Shoulder)
18
102122 Distributor Shaft, 3
102123 Sensing Shaft, 3
102124 Subshaft, 5
102125 Clutch - Driven, 3
102129 Contact Bracket, 4
102133 Comb - Bakelite, 25
102134 Bracket, 25
102167 Spring Plate, 6
102168 Post, 24
102169 Tape Platform, 25
102179 Shaft - Eccentric, 22
102180 Shaft, 23
102183 Spacer, 23
102134 Spacer, 22
102185 Spacer - End, 23
102186 Spacer, 22
102187 Screw (10-32 Pilot), 22
102188 Spacer, 23
102189 Transfer Bail, 22
102191 Spacer, 22
102194 Contact Bail #1, 22
102195 Contact Bail #2, 22
102196 Contact Bail #3, 22
102197 Contact Bail #4, 22
102198 Contact Bail #5, 22
102199 Bushing, 22
102202 Foot - Brass, 2
102206 Support, 19
102208 Punch Block and Die Plate
(Fitted Together), 19
102209 Feed Roll, 19
102210 Code Punch, 19
102220 Shaft, 19
102221 Spring, 19
102222 Stripper, 19
102223 Spring Arm, 19
102224 Spacer, 19
102225 Spacer, 19
102226 Spacer, 19
102227 Spring Arm Bracket, 19
102228 Tape Operating Bail, 19
102229 Code Punch Bracket, 17
102230 Main Bail (With Dowel),
102231 Guide Bracket - Right, 8
102232 Guide Bracket - Left, 8
102239 Stripper Plate, 16
102252 Spring, 3
102257 Post, 1
102260 Clutch Detent Bracket, 6
102261 Clutch Magnet Bracket, 6
102263 Stud, 7
102287 Contact Spring - Long, 4
102288 Contact Spring - Short, 4
102290 Spacer, 4
102291 Spacer, 3
102292 Vertical Link #1, 17
102293 Vertical Link #2, 17
102294 Vertical Link #3, 17
102295 Vertical Link #4, 17
102296 Vertical Link #5, 17
102297 Vertical Link Bracket, 17
102298 Type Bar-Without Pallet
(30), 30
102303 Roller, 6, 20
102304 Detent Lever, 6
102305 Sensing Finger, 21
102306 Sensing Finger #1, 20
102307 Sensing Finger #2, 20
102308 Sensing Finger #3, 20
102309 Sensing Finger #4, 20
102310 Sensing Finger #5, 20
102317 Contact Mounting Plate, 6
102318 Bracket, 6
102319 Contact Bracket, 19
102325 Bracket, 19
102326 Stiffener, 4
102327 Contact Spring - Long, 19
102328 Contact Spring - Long, 19
102329 Contact Spring - Short,
4, 6, 19
102330 Contact Spring - Long, 4, 6

NUMERICAL INDEX

102333	Punch Cam, 13	102870	Power Cord (Assem.), 29	110375	Support (With Spacer), 19
102339	Tape - Out Contact (Assem.) 6	102964	Retaining Bracket, 17	110376	Feed Pawl Lever, 17
102340	Transmitter Stop Contact (Assem.), 6	102965	Spacer, 17	110379	Adjusting Bar, 4
102356	Bracket, 21	102966	Spring Post, 17	110382	Eccentric, 22
102358	Cam Lever, 19	102993	Bracket, 20	110383	Extension (Oscillator), 20
102359	Backstop Bracket, 21	102999	Screw (2-56 x 5/32), 19	110455	Spring, 20
102360	Tape Guide-Plate, 21	103076	Spacer, 20	110495	Gear Guard, 1
102367	Extension (Tape Feed), 20, 21	103084	Spacer, 20	110682	Feed Roll, 16
102368	Extension (Oscillator), 21	103091	Bracket, 5	110684	Bearing Housing, 5
102373	Bushing, 20	103117	Cable - Power, 29	110685	Punch Arm Link, 18
102375	Clutch Release Lever, 15	103131	Tape Guide, 21	110686	Bell Bearing, 5
102376	Stud, 14	103142	Spacer, 22	110687	Retainer, 5
102378	Bracket - Right, 9	103160	Strap - With 82474 Terminals, 29	110689	Subshaft, 5
102379	Ribbon Guide, 17	103161	Strap - With 82474 Terminals, 29	110714	Screw (Adjusting), 4
102380	Platen (With 103538 Insert), 7	103177	Cord (With 82474 Terminals), 29	110754	Adjusting Cam, 20
102381	Platen Support, 7	103302	Spring (With Roller), 21	110782	Sensing Finger #8, 20
102382	Shaft, 7	103305	Washer, 4	110829	Chad Tube, 16
102386	Screw (Oil Retainer) (5/16 - 32 Special), 5	103310	Code Bar Locking Lever, 11, 30	110844	Feed Pawl Lever, 16
102391	Spacer - Long, 23	103316	Bell Crank #1, 17	110845	Spacer, 16
102392	Spacer, 22	103317	Bell Crank #2, 17	110848	Guard, 14
102396	Guide Strip, 1	103318	Bell Crank #3, 17	111059	Platen Shift Bracket, 7
102397	Retaining Strip - Left, 1	103319	Bell Crank #4, 17	111471	Gage, 16
102399	Chad Box, 1	103320	Bell Crank #5, 17	111653	Shim, 5
102400	Motor Plate, 26	103341	Bracket, 10	111686	Disc, 13
102408	Bracket, 2	103356	Spring, 2, 17	111863	Ribbon Spool Cup, 9
102411	Plunger Extension, 8	103357	Spring, 20, 21	111964	Shim, 19
102412	Clutch Release Rod, 15	103398	Spring, 20	112076	Spring, 17
102413	Intermediate Bail, 7	103399	Tape Chute, 5	112130	Spring Strip, 20
102414	Bracket, 7	103431	Grommet - Rubber, 26, 27	115515	Mounting Bracket (With Spring Post), 22, 23
102415	Shift Latch, 7	103516	Oil Shield, 4	115573	Shaft, 22, 23
102416	Screw (6-40 Shoulder), 7	103533	Cable - With Plug (assem.) 33 Conductor, 29	115574	Shaft, 22, 23
102419	Extension, 7	103538	Insert, 7	115576	Spacer, 22, 23
102420	Spacer, 8	104104	Function Bar - Letters (Standard), 30	115577	Shaft - Eccentric, 22, 23
102421	Plunger Extension Bracket, 8	104750	Spring Bracket, 4	115978	Spring, 17, 18
102422	Shift Bail, 7	104751	Spring, 4	117387	Retainer, 13
102423	Bracket, 7	104828	Screw (4-40 x 15/64), 9	117391	Bracket, 2
102424	Platen Frame, 7	105114	Screw (6-40 Pilot), 20	117394	Sensing Contact Pile-Up, 24
102425	Platen Shift Bracket, 7	105117	Screw (4-48 Special), 20	117414	Contact Spring, 19
102428	Feed Arm, 21	105120	Back Stop Bracket, 20	117415	Collar, 19
102431	Tape Feed Lever, 21	105121	Feed Arm (With Roller), 20	117416	Post, 19
102433	Adjusting Cam, 21	105127	Tape Feed Lever, 20	117417	Post, 19
102435	Shim, 20	105128	Tape Guide Blade - Front 20	117418	Lever, 19
102436	Shaft, 20	105129	Tape Guide Blade - Rear 20	117419	Bracket, 19
102439	Lid Latch, 20	105133	Transmitter Lid, 20	117432	Cable - Base, 29
102441	Selector Yoke Plate, 21	105134	Bracket, 20	117433	Cable - With Plug (Assem.) 33 Conductor, 29
102444	Shaft, 20	105136	Sensing Cam Sleeve, 3	117744	Cable - Pull Bar Contacts, 29
102445	Transfer "T" Lever, 22	105137	Guide, 20	117753	Guard - Front, 23, 25
102447	Oscillating Lever, 20	105139	Selector Yoke Plate, 20	117754	Guard - Rear, 23, 25
102448	Transmitter Lid, 21	105140	Feed Pin Oscillator (With Spring Post & Pin), 20	117755	Cover Plate, 1
102449	Feed Pin Oscillator, 21	105142	Contact Lever, 20	117756	Tape Platform, 24
102451	Tape - Out Lever, 21	105143	Tape Holding Lever (With Spring Bracket & Hub), 20	118274	Cable - With Plug (Assem.) 33 Conductor, 29
102458	Contact Lever, 4	105144	Tape - Out Lever, 20		
102465	Screw (6-40 x 37/64), 3	105147	Sensing Finger #H, 20		
102472	Contact Spring - Long, 4	105940	Stiffener, 4, 6		
102473	Contact Spring - Short, 4	106380	Code Plate (Blank), 1		
102477	Spring Strip, 21	110330	Screw (2-56 Shoulder), 19		
102512	Transfer Slide, 22	110344	Locating Plate, 1		
102706	Spring Bracket, 21	110353	Spring Post, 17		
102759	Transmitter Yoke, 21	110356	Spring Bracket, 20		
102764	Retaining Strip - Right, 1	110357	Comb - Bakelite, 24		
102773	Shim, 22	110358	Bracket, 24		
102774	Bolt (8-36 x 4-3/8), 26, 27	110359	#4 Contact Bail, 22		
102776	Oil Wick - Felt, 3	110360	#5 Contact Bail, 22		
102798	Oil Cup (With Cap), 5	110361	#3 Contact Bail, 22		
102813	Ribbon Shaft, 9	110362	#2 Contact Bail, 22		
102815	Spring Bracket - Left, 9, 11	110363	#1 Contact Bail, 22		
102841	Screw (2-56 Special), 20	110365	Bracket, 24		
102845	Set of Motor Pinion & Gear Parts (Arrg't. "EL"), 26, 28	110366	Punch Retractor, 17		
102846	Set of Motor Pinion & Gear Parts (Arrg't. "EM"), 26, 28	110374	Transmitter Yoke (With Spring Posts), 20		
102847	Set of Motor Pinion & Gear Parts (Arrg't. "EN"), 26, 28				
102848	Set of Motor Pinion & Gear Parts (Arrg't. "EP"), 26, 28				