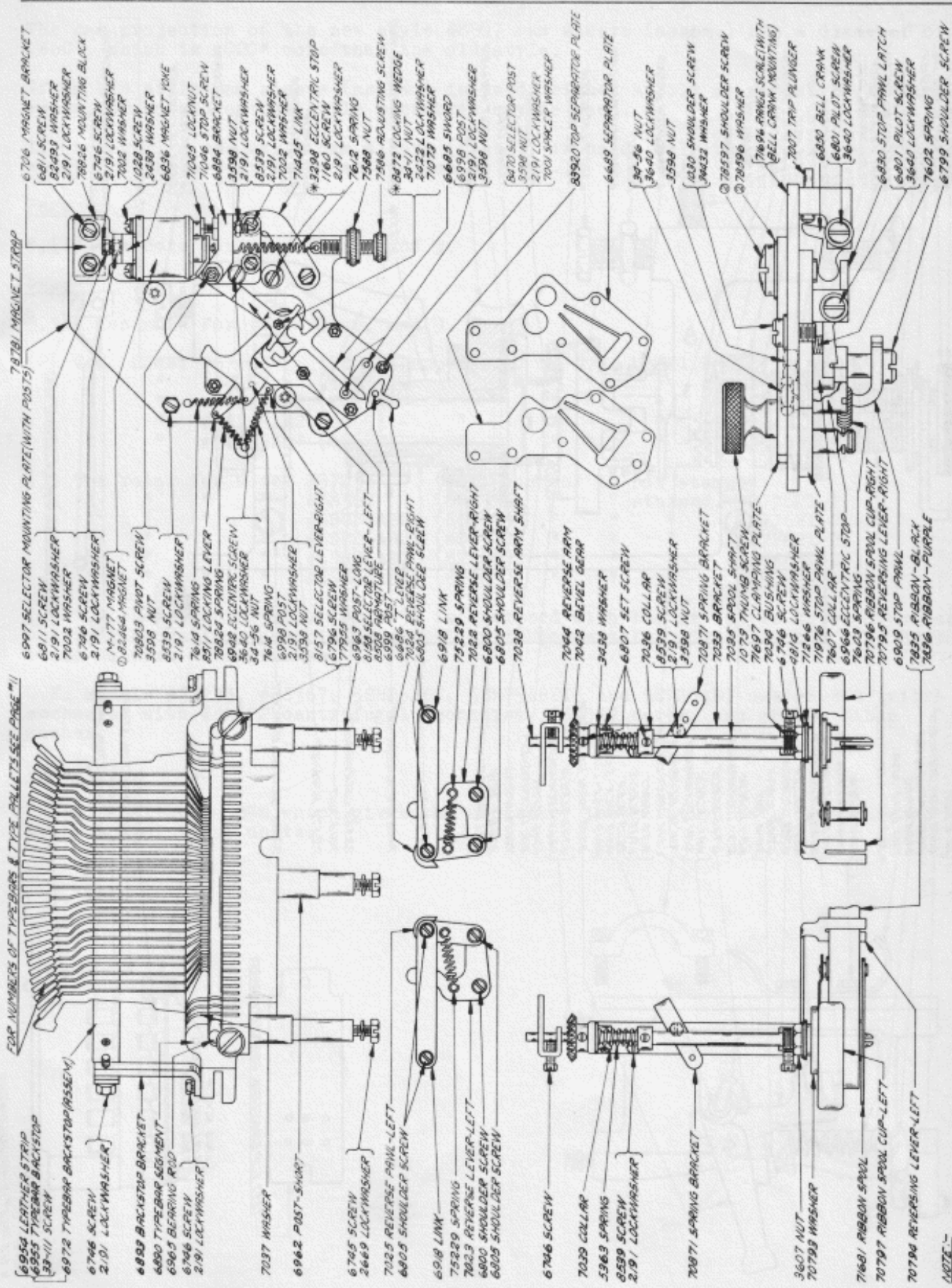
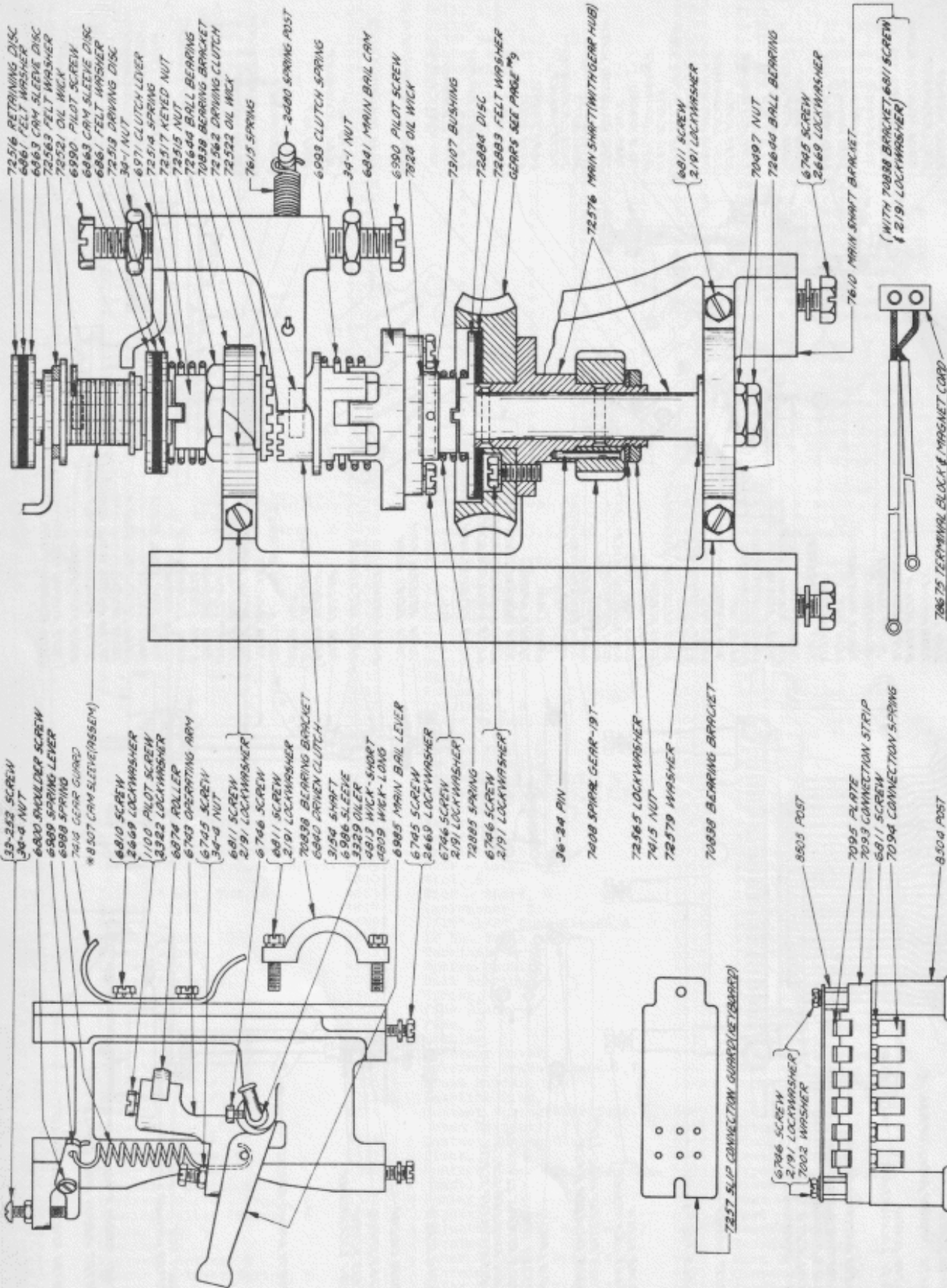


NOTE:
* SEE PAGE #12 FOR EXPLANATION



NOTE -
* 08 SEE PAGE # 113 FOR EXPLANATION



NOTE -
* SEE PAGE 13 FOR EXPLANATION

0678 SENDING-RECEIVING PRINTER BASE-BLACK

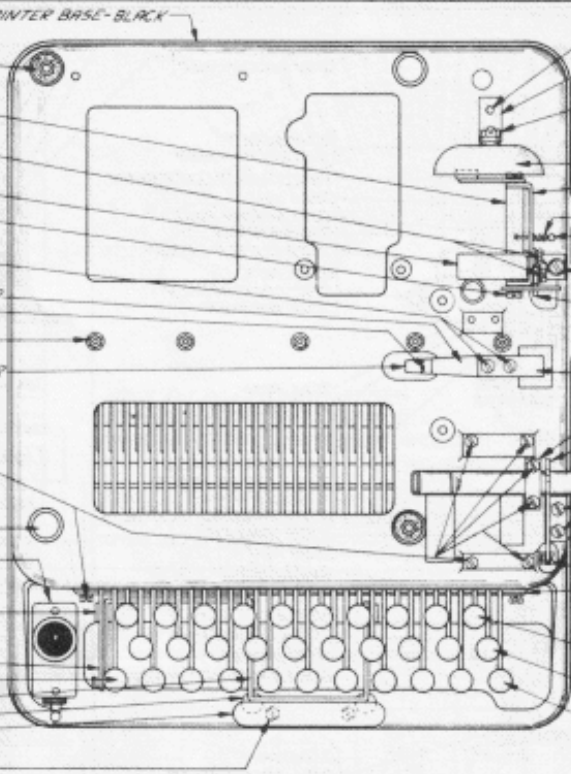
- 7337 FELT WASHER
- 7338 POST
- 2382 LOCKWASHER
- 34-4 NUT
- 8498 BELL HAMMER
- 6746 SCREW
- 2191 LOCKWASHER
- 7002 WASHER
- 7198 GEAR GUARD
- 6814 PILOT SCREW
- 2191 LOCKWASHER
- 6811 SCREW
- 7096 FIBRE BUSHING
- 2191 LOCKWASHER
- 7359 CONTACT SPRING-BACKSTOP
- 7403 CONTACT SPRING-UPPER
- 3598 NUT
- 7834 POST
- 7402 CONTACT SPRING-LOWER
- 7364.6 CABLE (W.D. "901)

- 6746 SCREW
- 2191 LOCKWASHER
- 7099 THUMB SCREW
- SWITCH SEE PAGE " 6
- 7078 BEARING POST
- 6301 PILOT SCREW
- 3598 NUT
- 2191 LOCKWASHER
- 2378 SPACER KEYLEVER
- KEYTOPS SEE PAGE "11
- 7080 SPACER BAR LOOP
- 2663 RUBBER BUFFER
- 7394 SPACER BAR
- 6746 SCREW
- 7001 WASHER
- 2191 LOCKWASHER

SELECTOR BARS	
NO. STAMPED ON BAR	CATALOG NUMBER
1	2431
2	2432
3	2433
4	2434
5	2435

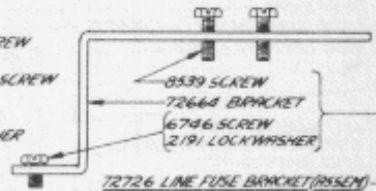
- 7287 UNIVERSAL BAR
- 70177 PILOT SCREW
- 3606 NUT
- 7396 BRACKET-LEFT
- 9203 BRACKET (WITH ROLLERS)
- 2566 SPACER KEYLEVER SPRING
- 2565 KEYLEVER SPRING
- 8254 CABLE CLAMP
- 1187 SCREW
- 72023 COVER PLATE
- 6746 SCREW
- 2191 LOCKWASHER

- 70722 RESISTANCE UNIT-500 OHMS
- 1028 SCREW
- 2439 WASHER
- 3640 LOCKWASHER
- 6746 SCREW
- 2191 LOCKWASHER
- 7001 WASHER



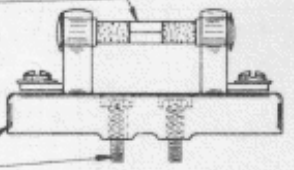
- 6746 SCREW
- 2191 LOCKWASHER
- 8465 BELL BRACKET
- 6810 SCREW
- 3438 WASHER
- 2669 LOCKWASHER
- 34-8 NUT
- 3628 OUTLET BUSHING
- 2610 BELL
- 8483 BELL HAMMER BRACKET
- 7887 STRAP
- 8058 SPRING
- 8498 SPRING POST
- 8539 SCREW
- 2191 LOCKWASHER
- 7002 WASHER
- 77451 STOP
- 3094 INSULATOR
- 3638 CONDENSER-1/2 M.F.
- 7398 PLATE
- 8293 INSULATOR
- 7623 STRAP
- 7199 TRIP OFF PAWL
- 35-133 SPRING
- 7393 TAPE GUIDE TUBE
- 8539 SCREW
- 2191 LOCKWASHER
- 7001 WASHER
- 7395 STOP PLATE
- 1245 SCREW
- 6805 SHOULDER SCREW
- 2525 KEYLEVER GUIDE-FRONT
- 9211 UPPER KEYLEVER
- 92985 UPPER KEYLEVER
- 9210 CENTER KEYLEVER
- 92994 CENTER KEYLEVER
- 9209 LOWER KEYLEVER
- 92903 LOWER KEYLEVER

71682 RELAY BRACKET (ASSEM)

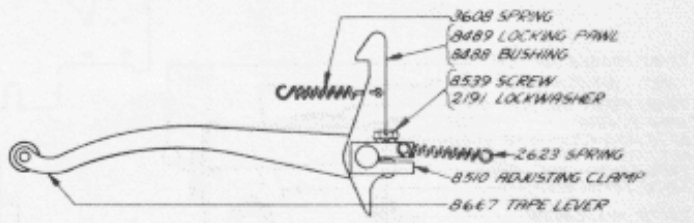


72726 LINE FUSE BRACKET (ASSEM)

- 2574 UPSTOP
- 70177 PILOT SCREW
- 3606 NUT
- 6805 SHOULDER SCREW
- 8539 SCREW
- 2191 LOCKWASHER
- 9203 BRACKET (WITH ROLLERS)
- 7397 BRACKET-RIGHT
- 3458 SHIM
- 7489 KEYLEVER GUIDE-REAR
- 5701 FUSE
- 6746 SCREW
- 2191 LOCKWASHER
- 2528 SPRING BAR
- 7375 SHAFT
- 3598 NUT
- 2191 LOCKWASHER
- 5700 FUSE BLOCK
- 8539 SCREW
- 70785 SPRING POST
- 7394 POST
- 3598 NUT
- 55080 BEZEL (USED WITH CELLULOID KEYTOPS)
- 3628 OUTLET BUSHING
- 3626 RUBBER FOOT



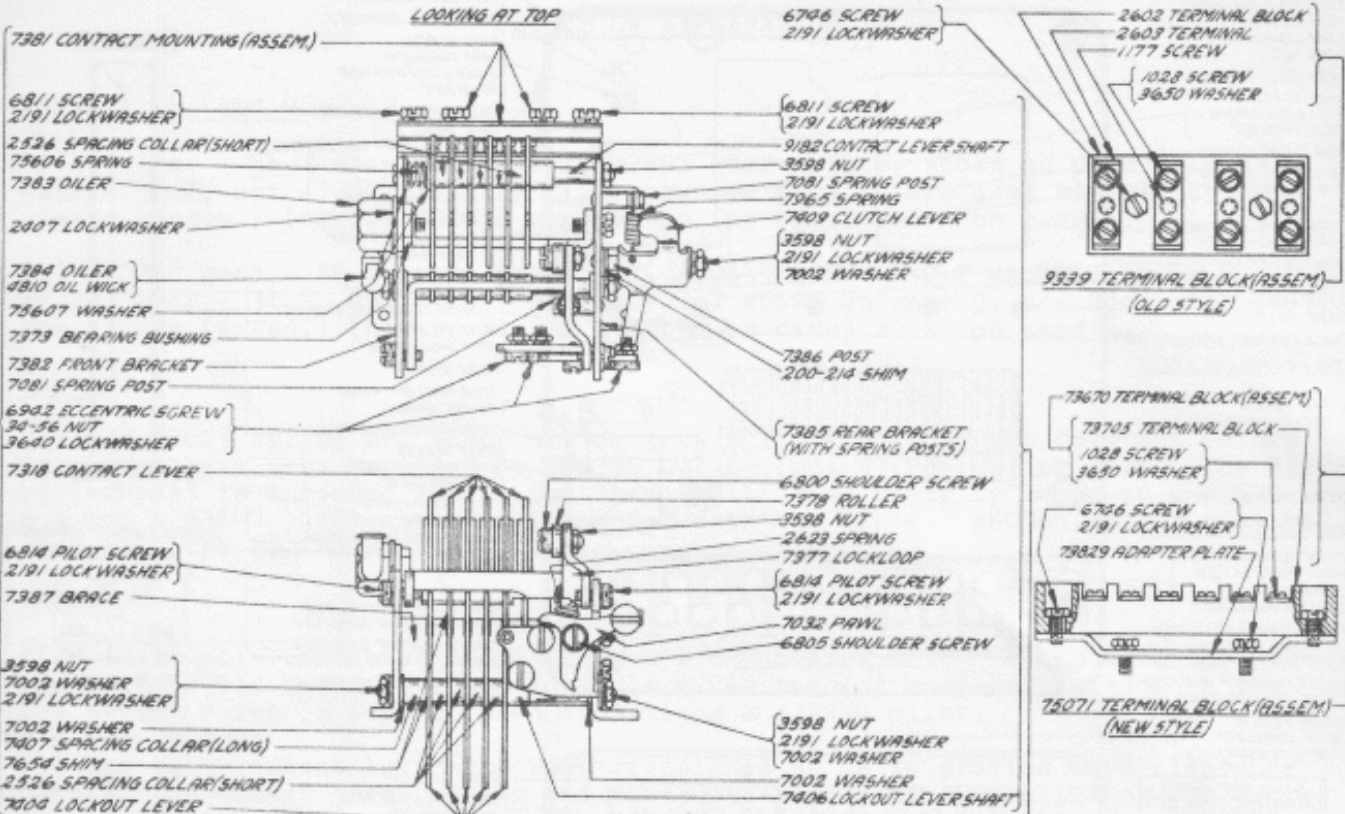
- 3608 SPRING
- 8489 LOCKING PAWL
- 8488 BUSHING
- 8539 SCREW
- 2191 LOCKWASHER
- 2623 SPRING
- 8510 ADJUSTING CLAMP
- 8667 TAPE LEVER



70361 RESISTANCE UNIT (ASSEM)-250-500-1000 OHMS

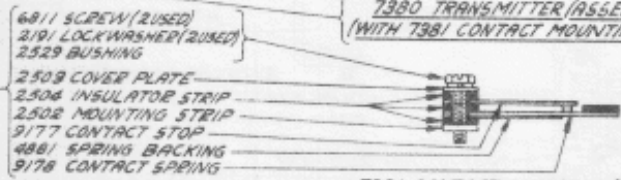
NOTE:
 (A) FOR USE WITH PNEUMATIC KEYTOPS
 (B) FOR USE WITH CELLULOID KEYTOPS

LOOKING AT TOP

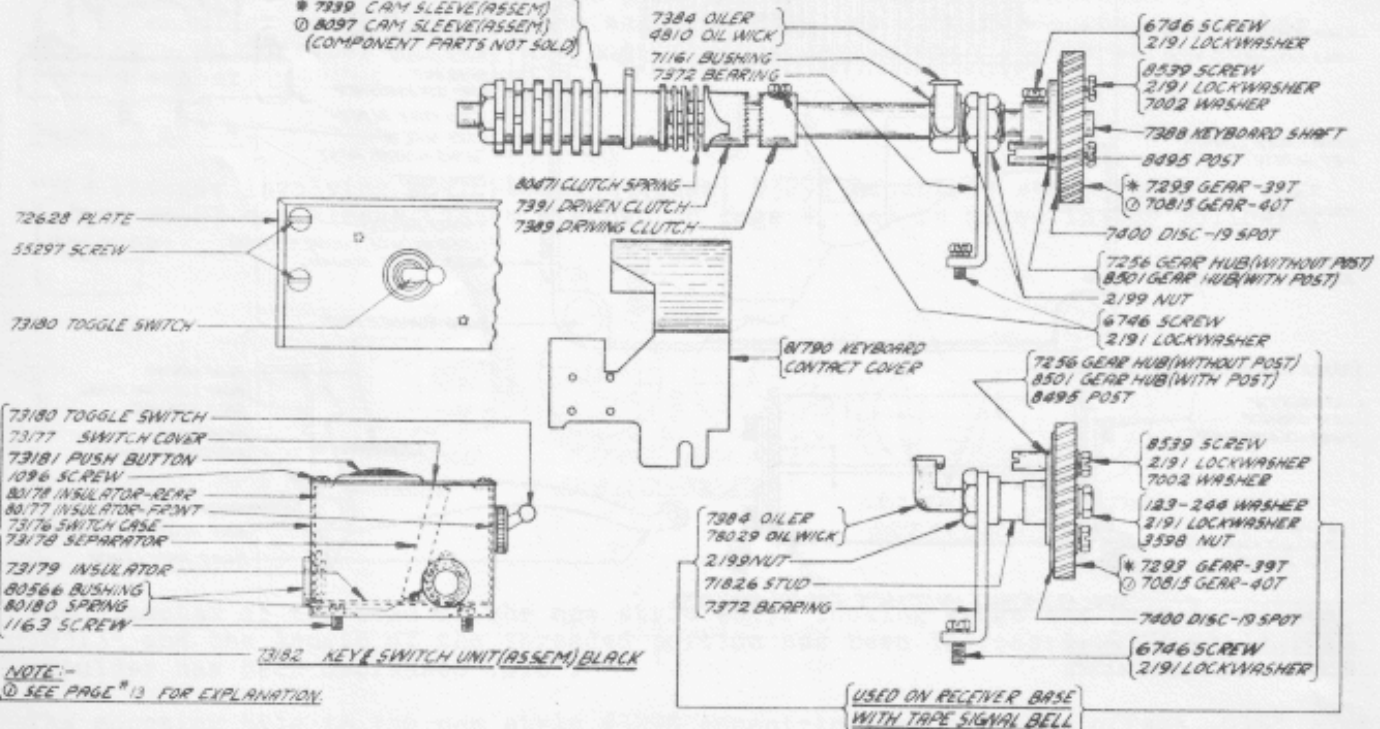


LOOKING AT RIGHT SIDE

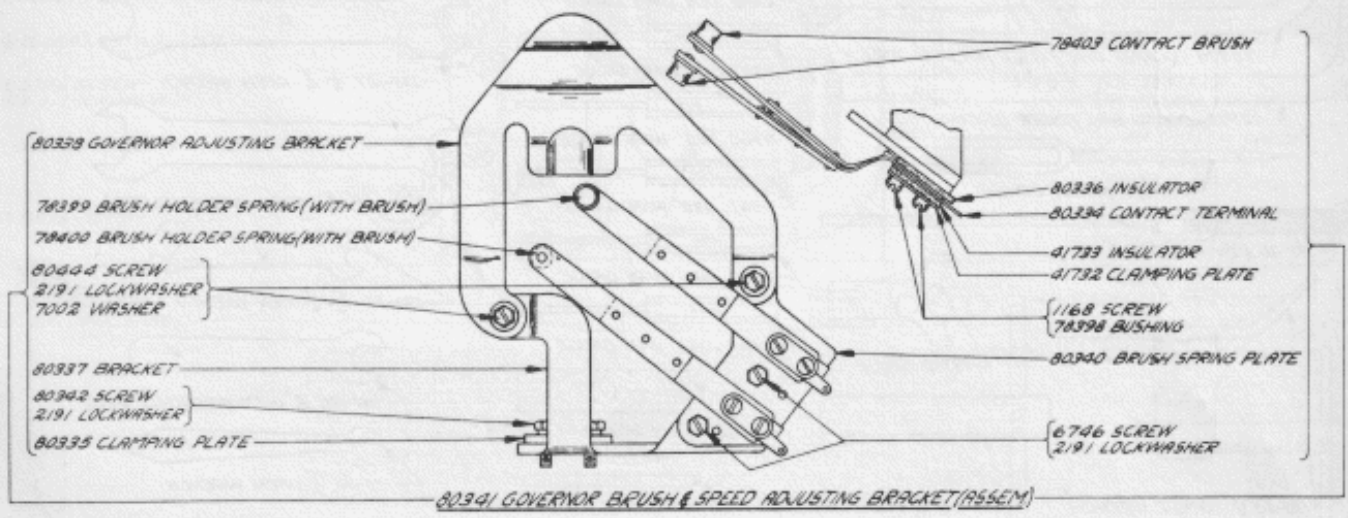
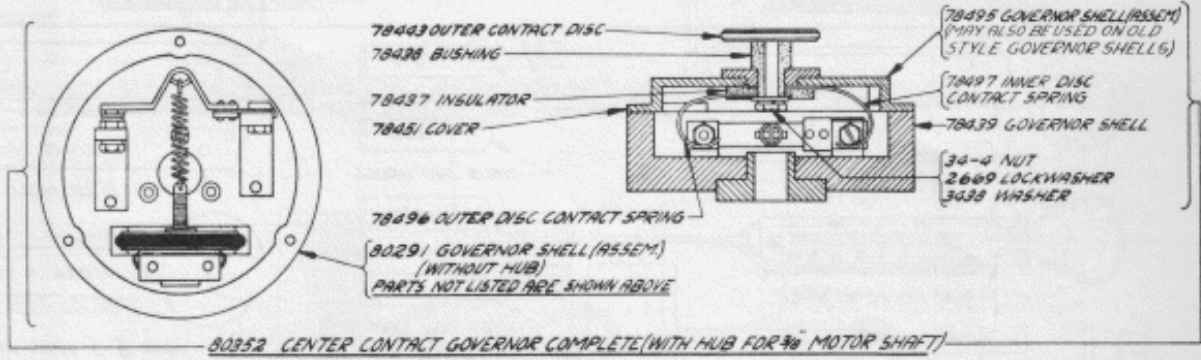
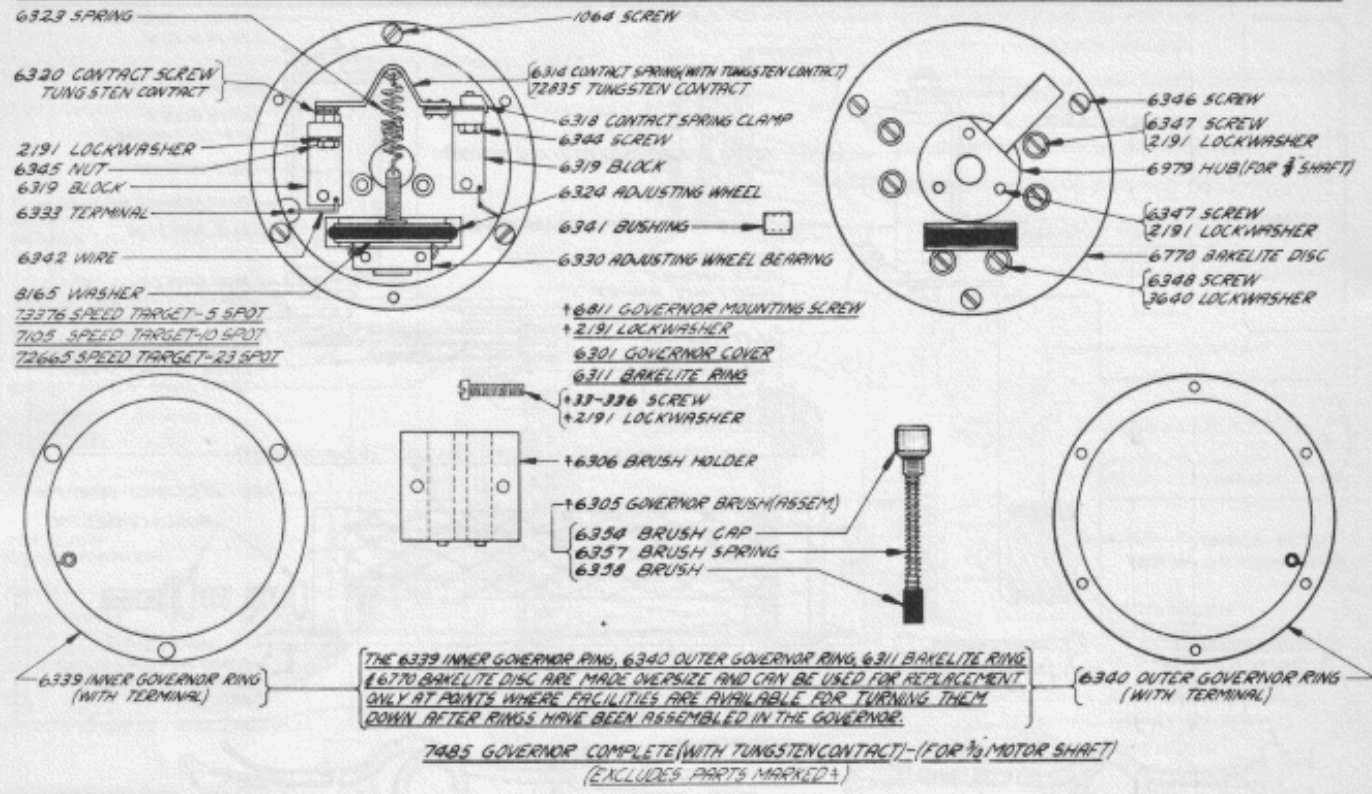
7380 TRANSMITTER (ASSEM.)
(WITH 7381 CONTACT MOUNTING (ASSEM.))

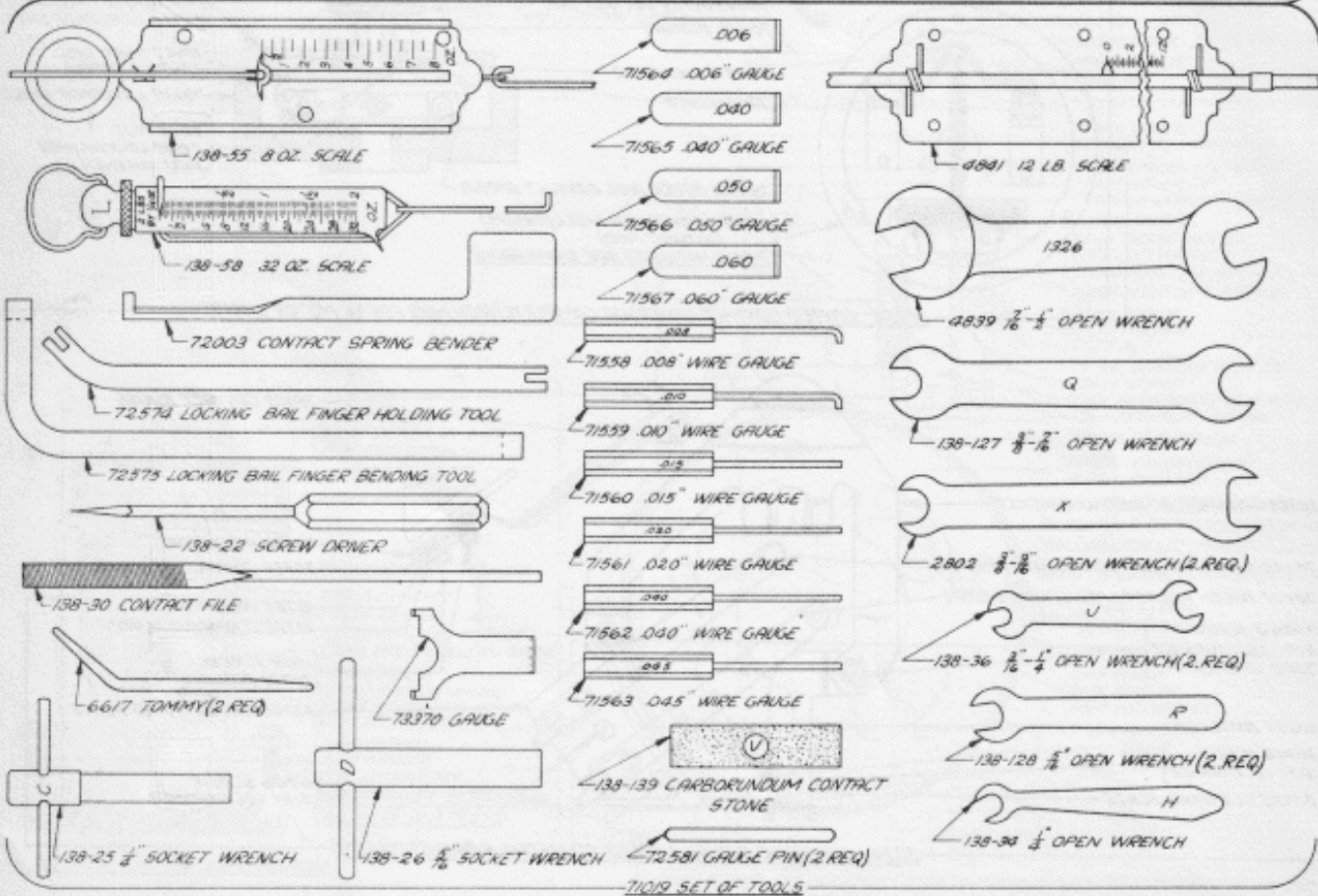
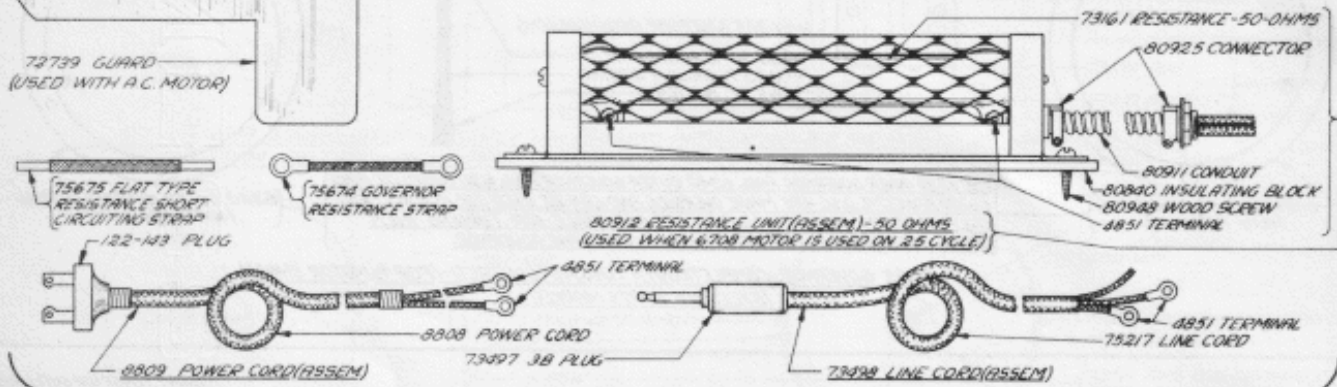
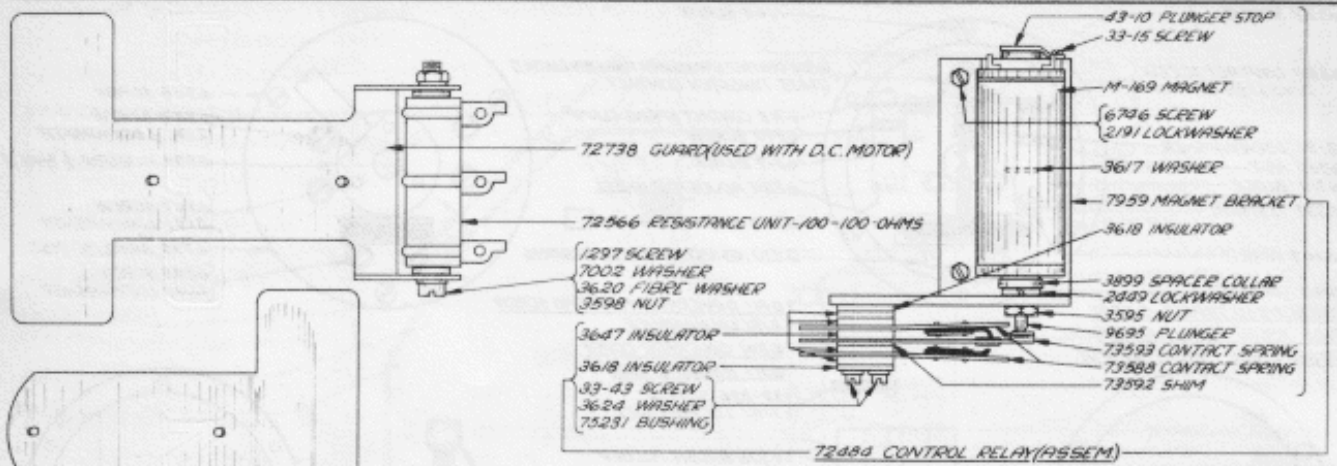


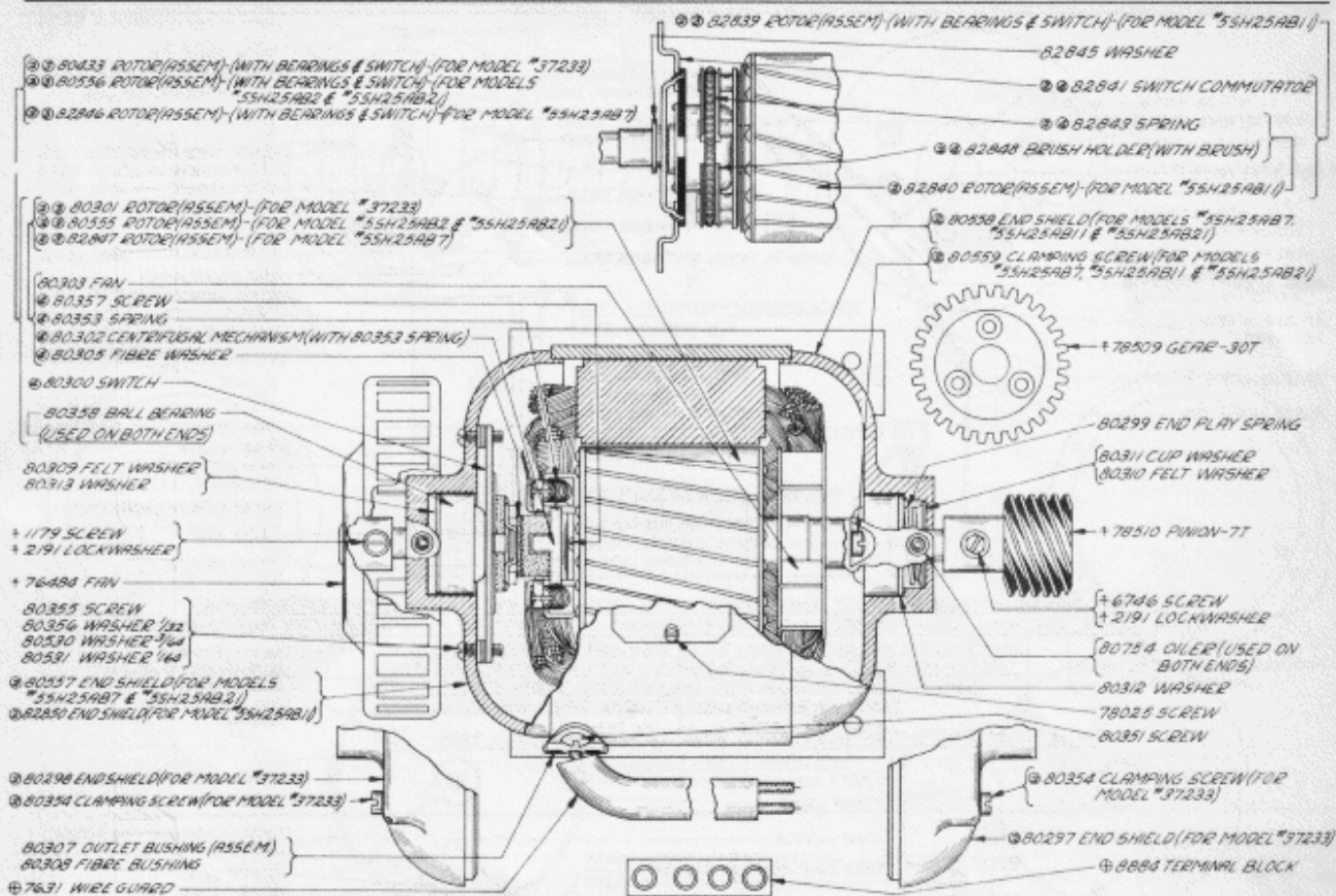
* 7339 CAM SLEEVE (ASSEM.)
① 8097 CAM SLEEVE (ASSEM.)
(COMPONENT PARTS NOT SOLD)



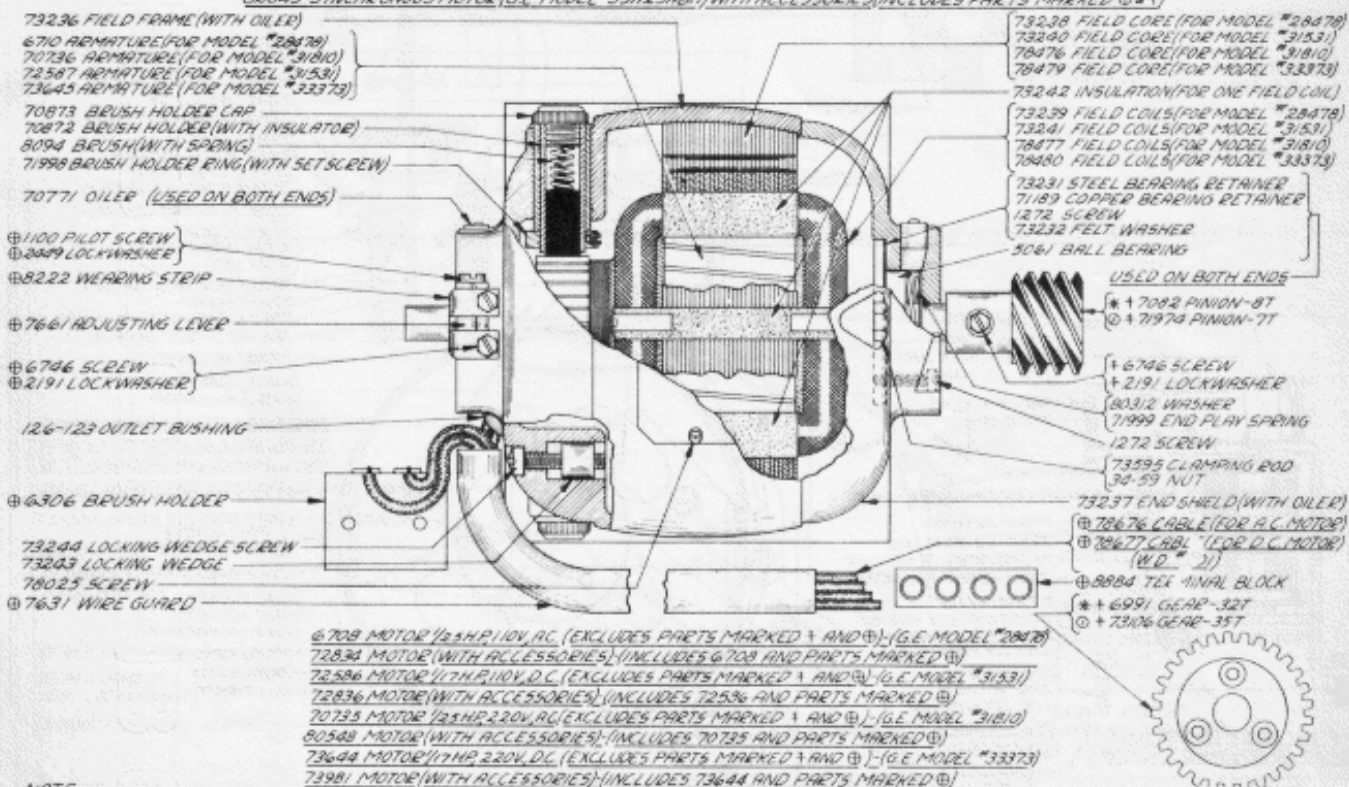
NOTE:-
* ① SEE PAGE 13 FOR EXPLANATION.





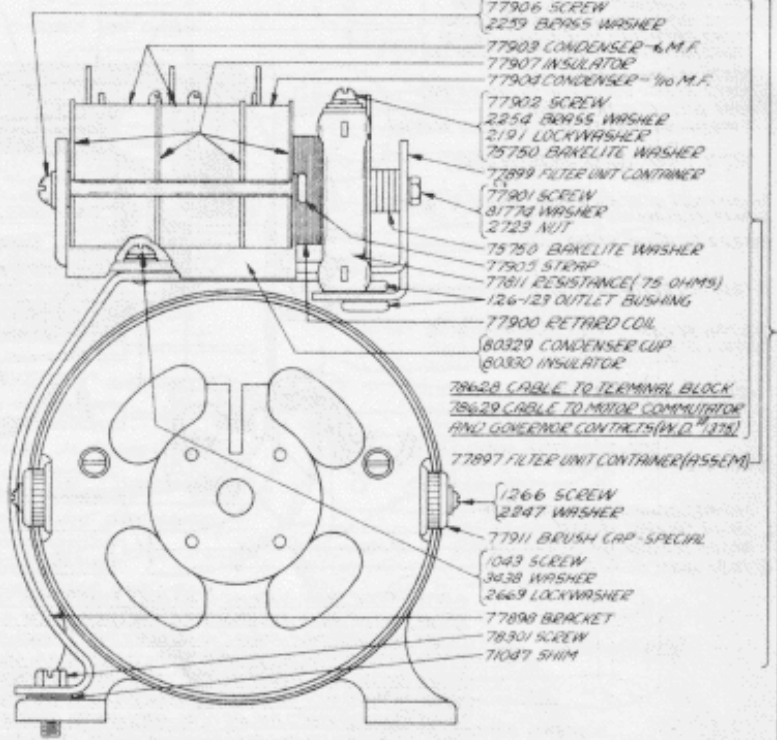
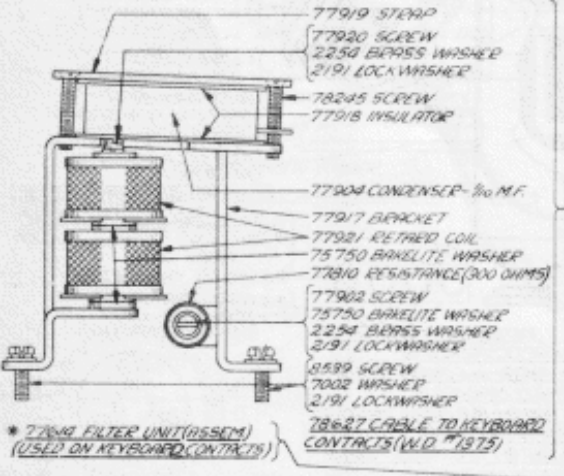
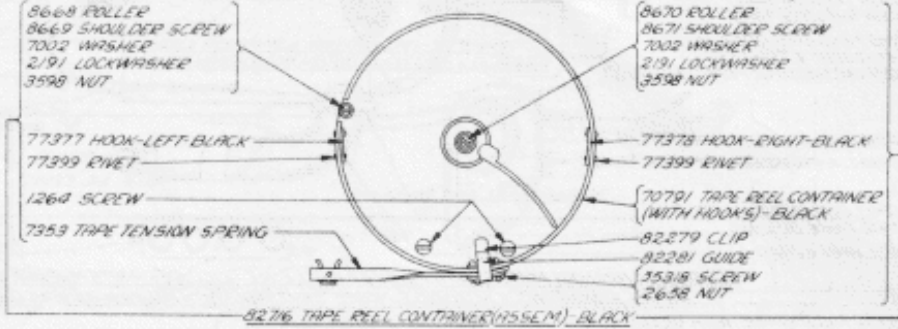
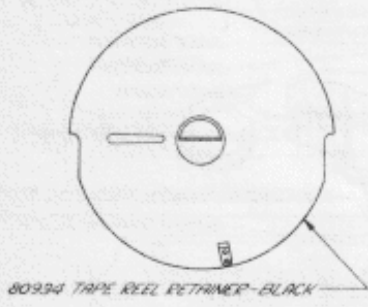
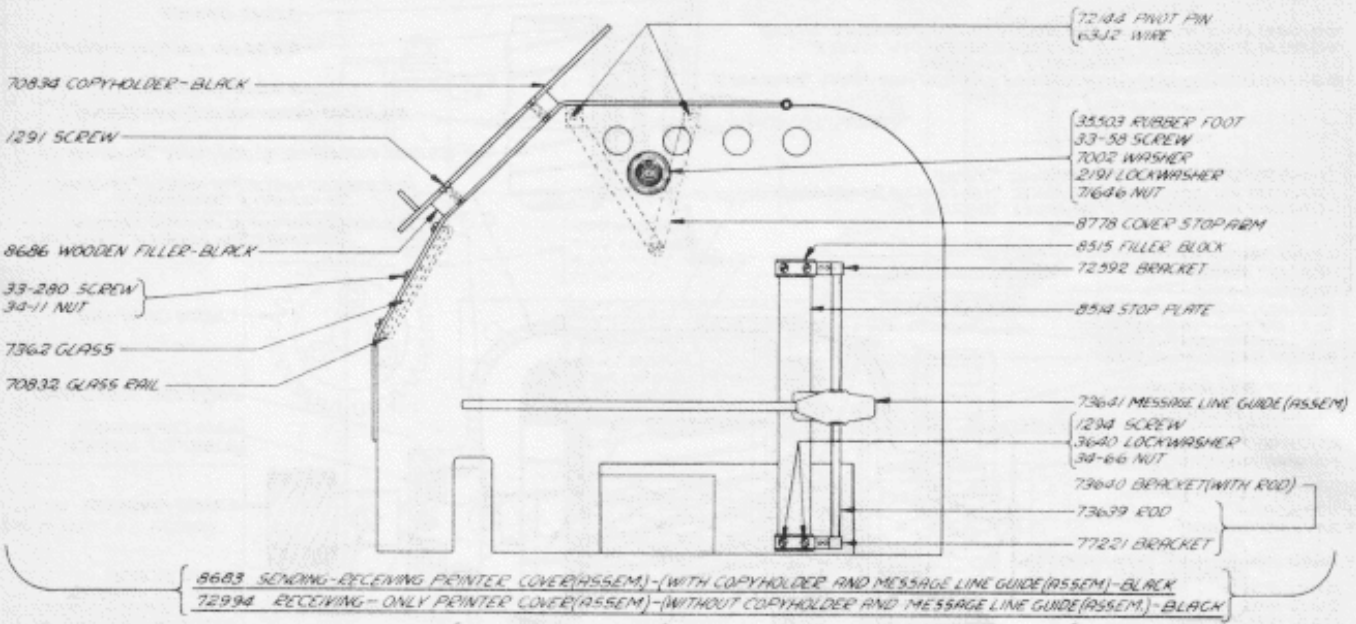


82283 SYNCHRONOUS MOTOR 1/40 H.P. 110V. 60 CYCLE A.C. (EXCLUDES PARTS MARKED * AND ⊕) - G.E. MODEL *55H25AB1
 82849 SYNCHRONOUS MOTOR (G.E. MODEL *55H25AB1) WITH ACCESSORIES (INCLUDES PARTS MARKED * AND ⊕)



NOTE

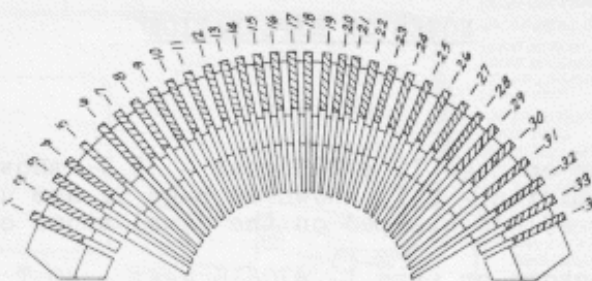
* ⊕ ⊕ ⊕ SEE PAGE *13 FOR EXPLANATION



* SEE PAGE 13 FOR EXPLANATION.

USED WITH BELL ON SHIFTED S	
CODE BARS	
NO STAMPED ON CODE BAR	CATALOG NO.
1B	8453
2C	70799
3C	70800
4C	70801
5B	8529

USED WITH BELL ON SHIFTED J	
CODE BARS	
NO STAMPED ON CODE BAR	CATALOG NO.
1B	8453
2B	8454
3B	8555
4B	8456
5B	8529



—NOTE—
CHECK CAREFULLY THE POSITION OF FULLBARS IN SEGMENT AND THE ARRANGEMENT OF THE TYPE PALLETS ON THE TYPEBARS. IF THESE DIFFER IN ANY WAY WITH THE ARRANGEMENT SHOWN ON THIS PAGE, THE PARTS SHOULD BE ORDERED BY NAME FOR EXAMPLE ORDER:
TYPE PALLET ----- (A -)
TYPEBAR #12 (WITH PALLET) (A -)
PNEUMATIC KEYTOP ----- (A -)
CELLULOID KEYTOP ----- (A -)

75604 SET OF CELLULOID KEYTOPS
83980 SET OF PNEUMATIC KEYTOPS
83982 SET OF CELLULOID KEYTOPS INCLUDING *83981 SET OF FRACTIONS KEYTOPS
83983 SET OF PNEUMATIC KEYTOPS INCLUDING *72708 SET OF FRACTIONS KEYTOPS

72697 SET OF FRACTIONS TYPE PALLETS }
83981 SET OF FRACTIONS KEYTOPS (CELLULOID) }
72708 SET OF FRACTIONS KEYTOPS (PNEUMATIC) }
} 0 1 2 3 4 5 6 7 8 9 # 10 11 12 13 14 15 16 17 18 19 20 21 22 23 24 25 26 27 28 29 30 31 32 33 34

NUMBER OF POSITION IN SEGMENT	FULL OR FUNCTION BARS		TYPEBARS WITHOUT PALLETS		TYPE PALLETS		TYPEBARS WITH PALLETS		PULL AND FUNCTION BAR SPRINGS	PNEUMATIC KEYTOPS CATALOG NUMBER	KEYTOP DESCRIPTION	CELLULOID KEYTOPS CATALOG NUMBER
	CATALOG NUMBER	DESCRIPTION	CATALOG NUMBER	NUMBER STAMPED ON BAR	CATALOG NUMBER	DESCRIPTION	CATALOG NUMBER	DESCRIPTION				
1												
2	6916	LTRS SHIFT							7965	3082	LTRS	72056
3	8457	BELL ON SHIFTED							7825	8177	S BELL	72825
3	8457	BELL ON SHIFTED							7825	7640	J 5GL	72040
4	8458	S PULLBAR	7421	1	7277	S	75913	7634	8177	S BELL	72825	
4	8458	J PULLBAR	7421	1	7268	J	70991	7634	7640	J 5GL	72040	
5	6692	STANDARD	7422	2	7282	X 1	70952	7634	3077	X 1	72054	
6	6692		7423	3	7275	Q 1	70953	7634	3070	Q 1	72047	
7	6692		7424	4	7280	V 1	70954	7634	3075	V 1	72052	
7	6692		7424	4	7268	V 3/8	72334	7634	72704	V 3/8	75656	
8	6692		7425	5	7265	G 2	70855	7634	3060	G 2	72037	
9	6692		7426	6	7281	W 2	70956	7634	3076	W 2	72053	
10	6692		7427	7	7264	F	70957	7634	7639	F	72036	
10	6692		7427	7	7269	F 1/4	72936	7634	71053	F 1/4	75652	
11	6692		7428	8	7261	C 1	70958	7634	3056	C 1	72033	
11	6692		7428	8	7269	C 1/4	72937	7634	71993	C 1/4	75655	
12	6692		7429	9	7262	D 2	70959	7634	3057	D 2	72034	
13	6692		7430	10	7276	P 2	70960	7634	3071	P 2	72046	
14	6692		7431	11	7268	J	75914	7634	73336	J	75603	
14	6692		7431	11	7277	S	70961	7634	7634	S	72049	
15	6692		7432	12	7259	A -	70962	7634	3054	A -	72031	
16	6692		7433	13	7278	T 5	70963	7634	3073	T 5	72050	
17	6692		7434	14	7263	E 3	70964	7634	3058	E 3	72035	
18	6692		7435	15	7252	N 1	70965	7634	71993	N 1	72044	
18	6692		7435	15	7269	N 3/8	72940	7634	72706	N 3/8	75658	
19	6692		7436	16	7267	I 8	70966	7634	3062	I 8	72039	
20	6692		7437	17	7273	O 9	70967	7634	3060	O 9	72045	
21	6692		7438	18	7266	H 2	70968	7634	3061	H 2	72038	
21	6692		7438	18	7269	H #	72941	7634	8255	H #	75659	
22	6692		7439	19	7270	L 1	70969	7634	3063	L 1	72042	
22	6692		7439	19	7269	L 3/4	72942	7634	71057	L 3/4	75654	
23	6692		7440	20	7279	U 7	70970	7634	3074	U 7	72051	
24	6692		7441	21	7271	M 1/2	70971	7634	3482	M 1/2	72043	
24	6692		7441	21	7264	M 2	72943	7634	3577	M 2	75705	
25	6692		7442	22	7283	V 6	70972	7634	3078	V 6	72055	
26	6692		7443	23	7274	P 0	70973	7634	3069	P 0	72046	
27	6692		7444	24	7260	B 2	70974	7634	3055	B 2	72032	
27	6692		7444	24	7265	B 5/8	72945	7634	72705	B 5/8	75657	
28	6692		7445	25	7269	K 1	70975	7634	3064	K 1	72041	
28	6692		7445	25	7266	K 1/2	72946	7634	72707	K 1/2	75653	
29	6692		7446	26	7284	Z 1/2	70976	7634	3079	Z 1/2	72056	
30	6692		7447	27	7298	*	75600	7634	77384	*	73100	
31	6692		7448	28	7299	=	75601	7634	77385	=	75099	
32	8459	BLANK							7825	3080	BLANK	72061
33	8459	FIGS SHIFT							7825	3081	FIGS	72057
34	8459	FIGS SHIFT							3610			

NOTES OF EXPLANATION

Pages 1, 6, and 9

*#7185 gear - 36 T shown on page 1, #7293 gear - 39 T, shown on page 6, #6991 gear - 32 T, and #7082 pinion - 8 T, shown on page 9, are used with #7339 cam sleeve (assem.) (having #71838 stamped on the cams) shown on page 6.

(1) #70816 gear - 35 T shown on page 1, #70815 gear - 40 T shown on page 6, #73106 gear - 35 T, and #71974 pinion - 7 T shown on page 9, are used with #8097 cam sleeve (assem.) (having #71839 stamped on cams) shown on page 6.

Page 1.

(2) The #2623 spring and #8468 spring post which were used for carriage return operation have been replaced by #80365 spring, and #72284 spring post. The #72284 spring post is threaded and is fastened to the base plate by means of a #3599 nut and a #3640 lockwasher applied underneath the plate. #80365 spring must be used with the #72284 spring post.

Page 2.

*The #7418 oiler has been replaced by a #78244 oiler which is threaded into the new style #7018 bushing. The old style #7018 bushing must be replaced by the new style, which is tapped, when installing a #78244 oiler.

(1) The #7059 detent lever has been redesigned so as to provide more clearance between the detent lever spring and the #7058 plate, thereby allowing the proper spring tension to be obtained. The #35-27 spring has been replaced by #78823 spring which must be used with the new style #7059 detent lever.

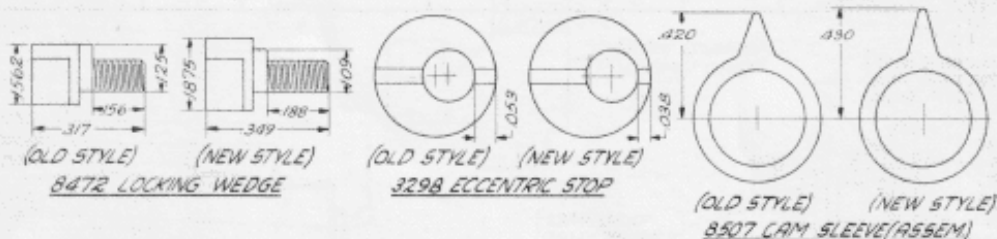
Page 3.

(1) The #82464 magnet is for use only with 77 W.P.M. machines.

(2) When the #71699 screw was tightened, the #71696 range scale and the #71697 clamping plate had a tendency to bind. In order to prevent this, the #71699 screw and #70885 washer, which were used together, have been replaced by a #78597 shoulder screw and a #78596 washer. This new shoulder screw and washer must be used together as they are not interchangeable with #71699 screw and #70885 washer.

Pages 3 and 4.

*The changes involving #8472 locking wedge, #3298 eccentric stop, shown on page 3, and #8507 cam sleeve (assem.) shown on page 4, may be noted in the following sketches:



The diameter of the head of the new style #8472 locking wedge has been increased .0313", and the length of the threaded portion has been increased .032", while the shoulder has been decreased .016".

The mounting hole in the new style #3298 eccentric stop has been offset .015" more than the old style.

The cam projection of the new style #8507 cam sleeve (assem.) has a diameter of .860", which is .020" more than the old style.

If an old style cam sleeve (assem.) is used, either an old or new style locking wedge, or an old or new style eccentric may be used.

If, however, a new style cam sleeve (assem.) is used, only the new style locking wedge and the new style eccentric can be used.

Page 6.

*,(1) See note for pages 1, 6, and 9.

Page 9.

*,(1) See note for pages 1, 6, and 9.

(2)	G.E. Model	#37233	(78217)	-superseded by	G.E. Model	#38367	(80553)
	"	"	#38367	(80553)	"	"	"
	"	"	#5SH25AB2	(80553)	"	"	"
	"	"	#5SH25AB21	(80553)	"	"	"
	"	"	#5SH25AB7	(82622)	"	"	"
	"	"	#5SH25AB11	(82283)	"	"	"

(3)	The rotor for Model	#37233	(78217)	motor is not stamped.
	"	"	#38367	(80553) " " stamped, 4277621-2.
	"	"	#5SH25AB2	(80553) " " " 4277621-2.
	"	"	#5SH25AB21	(80553) " " " 4277621-2.
	"	"	#5SH25AB7	(82622) " " " 4288831-G-3.
	"	"	#5SH25AB11	(82283) " " " 4290072-G-2.

(4) G.E. Model #5SH25AB11 (#82283) is equipped with the new style three-brush centrifugal mechanism (comprising #82841 switch commutator, 82843 spring, and 82848 brush holders with brushes.

G.E. Models #37233, #38367, 5SH25AB2, 5SH25AB21, and 5SH25AB7 use #80300 switch mechanism with #80302 centrifugal mechanism, #80357 screw, and #80305 fibre washer.

Page 10.

*Specification S-5048 which gives the necessary installation data is furnished with each of these units.

NUMERICAL INDEX

M-169	Magnet, 3	2603	Terminal, 6	6341	Bushing, 7
M-177	Magnet, 3	2610	Bell, 1,5	6342	Wire, 7,10
33-15	2-56 x 1/8" Screw, 8	2623	Spring, 1,5,6	6344	6-32 x 11/32 Screw, 7
33-43	2-56 x 3/4" Screw, 8	2658	6-32" Hex. Nut, 10	6345	6-32 Hex. Nut, 7
33-58	6-32 x 7/16" Screw, 10	2663	Rubber Buffer, 5	6346	6-32x23/32 Screw, 7
33-111	2-56 x 3/16" Screw, 3	2669	Lockwasher, 1,2,3,4,5,7,10	6347	6-32 x 3/8 Screw, 7
33-224	6-40x1/2 Shoulder Screw, 1	2723	6-32 Hex. Nut, 10	6348	4-36 x 3/4 Screw, 7
33-252	10-32 x 3/4" Screw, 4	2802	3/8"-9/16" Open Wrench, 8	6354	Brush Cap, 7
33-280	2-56 x 3/16" Screw, 10	2920	Lockwasher, 2	6357	Brush Spring, 7
33-336	6-32 x 5/8" Screw, 7	3054	Pneumatic Keypop (A -), 11	6358	Brush, 7
34-1	1/4-32 Hex. Nut, 4	3055	" (B ?), 11	6617	Tommy, 8
34-4	10-32 Hex. Nut, 1,2,4,5,7	3056	" (C :), 11	6685	Sword, 3
34-11	2-56 Hex. Nut, 3,10	3057	" (D \$), 11	6686	*T Lever, 3
34-56	4-40 Hex. Nut, 1,3,6	3058	" (E 3), 11	6689	Separator Plate, 3
34-59	10-30 Hex. Nut, 9	3060	" (G &), 11	6690	Pullbar Stripper, 2
34-66	4-36 Hex. Nut, 10	3061	" (H £), 11	6692	Pullbar - Standard, 11
35-27	Spring, 2	3062	" (I 8), 11	6706	Magnet Bracket, 3
35-72	Spring, 2	3064	" (K (, 11	6708	Motor 1/25 H.P., 110 V., A.C., 9
35-133	Spring, 5	3065	" (L), 11	6710	Armature (for 6708), 9
36-24	Pin, 4	3068	" (O 9), 11	6732	Motor Mounting Plate, 1
43-10	Plunger Stop, 8	3069	" (P O), 11	6743	Operating Arm, 4
122-102	Spring Eye, 2	3070	" (Q 1), 11	6745	10-32 x 1/2 Screw, 1,2,3,4
122-143	Plug, 8	3071	" (R 4), 11	6746	6-40 x 5/16 Screw, 1,2,3,4,5,6,7,8,9
123-37	Spring Post, 2,	3073	" (T 5), 11	6770	Bakelite Disc, 7
123-244	Washer, 6	3074	" (U 7), 11	6796	10-32x1/2 Screw, 2,3
123-308	Spring Terminal, 1	3075	" (V 2), 11	6799	6-40x7/16 Shoulder Screw, 1,3
126-123	Outlet Bushing, 9,10	3076	" (X 2), 11	6800	6-40x1/2 Shoulder Screw, 1,2,3,4,6
138-22	Screw Driver, 8	3077	" (Y 6), 11	6801	4-40 Pilot Screw, 1,3,5
138-25	1/4" Socket Wrench, 8	3078	" (Z "), 11	6805	6-40x1/8 Shoulder Screw, 1,3,5,6
138-26	5/16" Socket Wrench, 8	3079	" (Blank), 11	6807	6-40x3/16 Set Screw, 2,3
138-30	Contact File, 8	3080	" (Figs.), 11	6810	10-32 x 3/8 Screw, 1,4,5
138-34	1/4" Open Wrench, 8	3081	" (Ltra.), 11	6811	6-40 x 5/8 Screw, 1,2,3,4,5,6,7
138-36	3/16"-1/4" Open Wrench, 8	3082	Insulator, 5	6814	6-40 Pilot Screw, 5,6
138-55	8 Oz. Scale, 8	3094	Shaft, 4	6825	Spring Bracket, 2
138-58	32 Oz. Scale, 8	3154	Eccentric Stop, 3	6826	Spring Bracket, 2
138-127	3/8"-7/16" Open Wrench, 8	3298	Oiler, 4	6830	Stop Pawl Latch, 3
138-128	5/16" Open Wrench, 8	3329	Washer, 1,2,3,5,7,10	6831	Bracket, 1
138-139	Carborundum Contact Stone, 8	3438	Shim, 5	6832	Mounting Block, 2
200-214	Shim, 5	3458	Pneumatic Keypop (M 4), 11	6834	Ribbon Reverse Bail, 2
200-1348	Washer, 2	3482	" (M ?), 11	6836	Magnet Yoke, 3
1028	4-40 x 1/4" Screw, 3,5,6	3577	1/4-32" Hex. Nut, 8	6840	Driven Clutch, 4
1030	6-40x1/2 Shoulder Screw, 3	3595	6-40 Hex. Nut, 1,2,3,5,6,8,10	6841	Main Bail Cam, 4
1043	10-32x5/16 Screw, 10	3598	4-40 Hex. Nut, 1	6843	Bracket, 2
1064	6-32 x 1/4" Screw, 7	3599	6-40 Hex. Nut, 2,5	6845	Tape Guide - Right, 1
1073	6-40 Thumb Screw, 3	3606	5/16-32 Hex. Nut, 3	6846	Bearing, 1
1096	4-36 x 1/8" Screw, 6	3607	Spring, 5	6850	Bell Crank, 3
1100	1/4-32 Pilot Screw, 4,9	3608	Spring, 2,11	6859	Spacer Collar, 2
1150	6-40 x 5/16" Screw, 3	3610	Washer, 8	6861	Felt Washer, 4
1163	4-40 x 3/16" Screw, 6	3617	Fibre Washer, 8	6862	Feed Roll Gear, 1
1168	4-40 x 5/16" Screw, 7	3618	Washer, 8	6863	Cam Sleeve Disc, 4
1177	4-40 x 5/16" Screw, 6	3620	Rubber Foot, 5	6874	Roller, 4
1179	6-40 x 5/8" Screw, 9	3624	Outlet Bushing, 5	6884	Bracket, 3
1187	10-32 x 1/4" Screw, 5	3626	Condenser - 1/2 M.F., 5	6885	Brush Holder Bracket, 1
1245	10-32 x 1" Screw, 5	3628	Lockwasher, 1,2,3,5,5,7,10	6890	Typebar Segment, 3
1264	10-32 x 1/2" Screw, 10	3638	Insulator, 8	6893	Backstop Bracket, 3
1266	6-32 x 7/16" Screw, 10	3640	Washer, 6	6907	Spacer Shaft (With Gears), 1
1272	6-40 x 11/16" Screw, 9	3647	Spacer Collar, 8	6909	Stop Pawl, 3
1291	6-32 x 3/4" Screw, 10	3650	Insulator, 5	6915	Codebar Locking Lever, 11
1294	4-36 x 1/2" Screw, 10	3899	Wick - Long, 4	6916	Function Bar, 11
1297	6-40x3/8 (2 7/16) Screw, 8	4293	Wick, 6	6917	Function Bar, 11
2191	Lockwasher, 1,2,3,4,5,6,7,8,9,10	4809	Wick - Short, 4	6918	Link, 3
2199	7/16-32" Hex. Nut, 6	4813	Lockwasher, 3	6919	Spacer Locking Bail, 1
2247	Washer, 1,10	4814	7/16"-1/2" Open Wrench, 8	6920	Post, 1
2248	Pin, 2	4839	12 Lb. Scale, 8	6927	Platen Shaft (With Gears), 1
2254	Brass Washer, 10	4841	Terminal, 8	6928	Front Bearing, 1
2259	Brass Washer, 10	4851	Spring Backing, 6	6929	Carriage Frame, 1
2322	Lockwasher, 4	4881	Ball Bearing, 9	6930	Tape Guide - Left, 1
2378	Spacer Keylever, 5	5061	Spring, 3	6931	Feed Roll Lever (With Post), 1
2382	Lockwasher, 5	5353	Fuse Block, 5	6932	Feed Roll, 1
2407	Lockwasher, 6	5700	Fuse, 5	6933	Feed Roll Journal, 1
2422	Lockwasher, 3	5701	Bushing, 5	6935	Thumbwheel, 1
2431	Selector Bar #1, 5	5961	Governor Cover, 7	6936	Thumbwheel Locknut, 1
2432	Selector Bar #2, 5	6301	Governor Brush (Assem.), 7	6941	Feed Roll Lever, 1
2433	Selector Bar #3, 5	6305	Brush Holder, 7,9	6942	Eccentric Screw, 1,3,6
2434	Selector Bar #4, 5	6306	Bakelite Ring, 7	6943	Locking Pawl, 1
2435	Selector Bar #5, 5	6311	Contact Spring (With Tungsten Contact), 7	6944	Ribbon Guide, 1
2478	Washer, 3,5,	6314	Contact Spring Clamp, 7	6952	Plunger Sleeve, 2
2449	Lockwasher, 2,8,9	6318	Block, 7	6954	Leather Strip, 3
2480	Spring Post, 4	6319	Contact Screw (Tungsten Contact), 7	6955	Typebar Backstop, 3
2502	Mounting Strip, 6	6320	Spring, 7	6960	Platen Roll, 1
2503	Cover Plate, 6	6323	Adjusting Wheel, 7	6962	Post - Short, 3
2504	Insulator Strip, 6	6324	Adjusting Wheel Bearing, 7	6963	Post - Long, 3
2525	Keylever Guide - Front, 5	6330	Terminal, 7	6965	Bearing Rod, 3
2526	Spacing Collar (Short), 6	6333	Inner Governor Ring (With Terminal), 7	6966	Eccentric Stop, 3
2528	Spring Bar, 5	6339	Outer Governor Ring (With Terminal), 7	6969	Main Bracket, 2
2529	Bushing, 6	6340	Terminal, 6	6971	Clutch Lever, 4
2565	Keylever Spring, 5			6972	Typebar Backstop (Assem.), 3
2566	Spacer Keylever Spring, 5			6979	Hub (for 3/8" Shaft), 7
2574	Upstop, 5				
2602	Terminal Block, 6				

6985	Main Bail Lever, 4	7337	Felt Washer, 5	7654	Shim, 6
6986	Sleeve, 4	7338	Post, 5	7655	Spring, 1
6987	Spacer Washer, 2	7339	Cam Sleeve (Assem.), 6	7656	Spring, 1
6988	Spring, 4	7353	Tape Tension Spring, 10	7659	Spring, 2
6989	Spring Lever, 4	7362	Glass, 10	7661	Adjusting Lever, 9
6990	1/4-32 Pilot Screw, 4	7372	Bearing, 6	7678	Roller Journal, 2
6991	Gear - 32T, 9	7373	Bearing Bushing, 6	7679	Roller, 2
6993	Clutch Spring, 4	7375	Shaft, 5	7687	Tape Chute (Assem.), 1
6997	Selector Mounting Plate (With Posts), 3	7377	Lockloop, 6	7688	Chute, 1
6998	Post, 3	7378	Roller, 6	7689	Bracket, 1
6999	Post, 3	7380	Transmitter (Assem.)(With 7381 Contact Mounting Assem.), 6	7690	Brace, 1
7001	Washer, 1,2,3,5	7381	Contact Mounting (Assem.), 6	7691	Celluloid Cover, 1
7002	Washer, 1,2,3,4,5,6,7,8,10	7382	Front Bracket, 6	7824	Oil Wick, 4
7007	Trip Plunger, 3	7383	Oiler, 6	7825	Function Bar Spring, 11
7013	Bushing, 2	7384	Oiler, 1,6	7835	Ribbon - Black, 3
7015	Screw Strip, 2	7385	Rear Bracket (With Spring Posts), 6	7836	Ribbon - Purple, 3
7018	Bushing, 2	7386	Post, 6	7887	Strap, 5
7020	Plunger, 2	7387	Brace, 6	7959	Magnet Bracket, 8
7021	Bushing, 2	7388	Keyboard Shaft, 6	7965	Spring, 2,6,11
7022	Reverse Lever - Right, 3	7389	Driving Clutch, 6	8094	Brush (With Spring), 9
7023	Reverse Lever - Left, 3	7391	Driven Clutch, 6	8097	Cam Sleeve (Assem.), 6
7024	Reverse Pawl - Right, 3	7393	Tape Guide Tube, 5	8157	Selector Lever - Right, 3
7025	Reverse Pawl - Left, 3	7394	Spacer Bar, 5	8158	Selector Lever - Left, 3
7027	Roller, 2	7395	Stop Plate, 5	8165	Washer, 7
7029	Shaft, 2	7396	Bracket - Left, 5	8177	Pneumatic Keypoint (S Bell), 11
7032	Pawl, 6	7397	Bracket - Right, 5	8184	Washer, 2
7033	Bracket, 3	7398	Plate, 5	8222	Wearing Strip, 9
7034	Bushing, 3	7399	Contact Spring Backstop, 5	8254	Cable Clamp, 5
7035	Spool Shaft, 3	7400	Disc - 19 Spot, 6	8255	Pneumatic Keypoint (H #), 11
7036	Collar, 3	7402	Contact Spring - Lower, 5	8362	Guide Post, 2
7037	Washer, 3	7403	Contact Spring - Upper, 5	8448	Lockout Lever (With Rollers), 1
7038	Reverse Arm Shaft, 3	7404	Lockout Lever, 6	8450	Locking Toe, 1
7039	Collar, 3	7406	Lockout Lever Shaft, 6	8453	Codebar #1B, 11
7042	Bevel Gear, 3	7407	Spacing Collar (Long), 6	8455	" #2B, 11
7044	Reverse Arm, 3	7408	Spiral Gear - 19T, 4	8456	" #3B, 11
7046	Spacer Lever, 2	7409	Clutch Lever, 6	8457	" #4B, 11
7047	Feed Pawl, 2	7414	Gear Guard, 4	8459	Bell Pullbar, 11
7048	10-32x1/2 Shoulder Screw, 2	7415	1/2" x 3/8 Nut, 4	8461	Fullbar, 11
7058	Plate, 2	7416	Adjusting Wheel Guard, 1	8462	Function Bar, 11
7059	Detent, 2	7421	Typebar #1(Without Pallet), 11	8465	Post, 1
7067	Collar, 2	7422	" #2 " " " "	8466	Adjusting Lever, 1
7068	Bevel Gear, 2	7423	" #3 " " " "	8466	Bell Bracket, 1,5
7070	Ribbon Feed Lever, 2	7424	" #4 " " " "	8470	Carriage Locking Pawl, 1
7078	Bearing Post, 5	7425	" #5 " " " "	8472	Selector Post, 3
7080	Spacer Bar Loop, 5	7426	" #6 " " " "	8474	Locking Wedge, 3
7081	Spring Post, 6	7427	" #7 " " " "	8483	Main Bail Plunger, 2
7082	Pinion - ST, 9	7428	" #8 " " " "	8484	Guard, 1
7091	Insulator, 1	7429	" #9 " " " "	8485	Post, 1
7093	Connection Strip, 4	7430	" #10 " " " "	8488	Bell Hammer Bracket, 5
7094	Connection Spring, 4	7431	" #11 " " " "	8489	Bushing, 5
7095	Plate, 4	7432	" #12 " " " "	8493	Locking Pawl, 5
7096	Fibre Bushing, 5	7433	" #13 " " " "	8493	Pawl, 2
7099	Thumb Screw, 5	7434	" #14 " " " "	8494	Spring Post, 5
7105	Speed Target - 10 Spot, 7	7435	" #15 " " " "	8495	Post, 6
7185	Gear - 36T, 1	7436	" #16 " " " "	8497	Bell Hammer, 1
7188	Bearing, 1	7437	" #17 " " " "	8498	Bell Hammer, 5
7198	Gear Guard, 5	7438	" #18 " " " "	8499	Shaft (With Ratchet & Detent), 2
7199	Trip-Off Pawl, 5	7439	" #19 " " " "	8501	Shaft (With Ratchet & Detent), 2
7256	Gear Hub (Without Post), 6	7440	" #20 " " " "	8501	Gear Hub (With Post), 6
7257	Slip Connection Guard, 4	7441	" #21 " " " "	8504	Post, 4
7259	Typebar Pallet (A -), 11	7442	" #22 " " " "	8505	Post, 4
7260	" (B 1), 11	7443	" #23 " " " "	8507	Post, 4
7261	" (C 1), 11	7444	" #24 " " " "	8508	Cam Sleeve (Assem.), 4
7262	" (D 8), 11	7445	" #25 " " " "	8508	Armature, 3
7263	" (E 3), 11	7446	" #26 " " " "	8509	Main Bail, 2
7264	" (F 1), 11	7447	" #27 " " " "	8510	Adjusting Clamp, 5
7265	" (G 4), 11	7448	" #28 " " " "	8511	Locking Lever, 3
7266	" (H 2), 11	7484	Codebar Post, 2	8514	Stop Plate, 10
7267	" (I 8), 11	7485	Governor Complete (With Tung- sten Contact)-(for 3/8" Motor Shaft), 7	8515	Filler Block, 10
7268	" (J 1), 11	7552	Typebar Pallet (N 1), 11	8529	Codebar #5B, 11
7269	" (K 1), 11	7586	Adjusting Screw, 3	8539	6-40 x 1/2 Screw, 1,2,3,5,6,10
7270	" (L 1), 11	7588	Nut, 3	8567	Tape Lever, 5
7271	" (M 6), 11	7599	Spring, 2	8668	Roller, 10
7273	" (O 9), 11	7602	Spring, 3	8669	6-40x3/16 Shoulder Screw, 10
7274	" (P 0), 11	7603	Spring, 3	8670	Roller, 10
7275	" (Q 1), 11	7607	Collar, 3	8671	6-40 Shoulder Screw, 10
7276	" (R 4), 11	7610	Main Shaft Bracket, 4	8678	Sending-Receiving Printer Base - Black, 5
7277	" (S 1), 11	7612	Spring, 3	8683	Sending-Receiving Printer Cover (Assem.)(With Copyholder and Message Line Guide Assem.) Black, 10
7278	" (T 5), 11	7614	Spring, 3	8686	Wooden Filler - Black, 10
7279	" (U 7), 11	7615	Spring, 4	8778	Cover Stop Arm, 10
7280	" (V 1), 11	7618	Spring, 1	8808	Power Cord, 8
7281	" (W 2), 11	7623	Strap, 5	8809	Power Cord (Assem.), 8
7282	" (X 1), 11	7631	Wire Guard, 9	8884	Terminal Block, 1,9
7283	" (Y 6), 11	7634	Fullbar Spring, 11	9177	Contact Stop, 6
7284	" (Z 1), 11	7638	Pneumatic Keypoint (S), 11	9178	Contact Spring, 6
7287	Universal Bar, 5	7639	" (F), 11	9182	Contact Lever Shaft, 6
7290	Shaft, 1	7640	" (J80L), 11	9203	Bracket(With Rollers), 5
7293	Gear - 39T, 6			9209	Lower Keylever, 5
7318	Contact Lever, 6			9210	Center Keylever, 5
7334	Post, 5			9211	Upper Keylever, 5
7336	Gear - 19T, 1				

NUMERICAL INDEX

73829	Adapter Plate, 6	78509	Gear - 30T, 9	82464	Magnet, 3
73981	1/17 H.P., 220 V., D.C. Motor (With Accessories), 9	78510	Pinion - 7T, 9	82493	Washer, 3
75071	Terminal Block (Assem.), 6	78533	Spring, 1	82716	Tape Reel Container (Assem.), Black, 10
75217	Line Cord, 8	78596	Washer, 3	82839	Rotor (Assem.) (With Bearings and Switch), 9
75226	Oil Wick, 2	78597	10-32x9/64 Shoulder Screw, 3	82840	Rotor (Assem.), 9
75229	Spring, 3	78627	Cable to Keyboard Contacts, 10	82841	Switch Commutator, 9
75231	Bushing, 8	78628	Cable to Terminal Block, 10	82843	Spring, 9
75336	Celluloid, 1	78629	Cable to Motor Commutator and Governor Contacts, 10	82845	Washer, 9
75450	Post, 1	78675	Terminal Block and Magnet Cord, 1, 4	82846	Rotor (Assem.) (With Bearings and Switch), 9
75517	Pullbar Guide, 2	78676	Cable (for A.C. Motor), 9	82847	Rotor (Assem.), 9
75600	Typebar #27 (With Pallet) (.,), 11	78677	Cable (for D.C. Motor), 9	82848	Brush Holder (With Brush), 9
75601	" #28 " " " (= #) "	78781	Magnet Strap, 3	82849	Synchronous Motor (With Ac- cessories), 9
75603	Celluloid Keypop (J), 11	78823	Spring, 2	82850	End Shield, 9
75604	Set of Celluloid Keypops, 11	78824	Spring, 3	83920	Top Separator Plate, 3
75606	Spring, 6	78826	Mounting Block, 3	83980	Set of Pneumatic Keypops, 11
75607	Washer, 6	80177	Insulator - Front, 6	83981	Set of Fractions Keypops (Celluloid), 11
75652	Celluloid Keypop (F 1/4), 11	80178	Insulator - Rear, 6	83982	Set of Celluloid Keypops Including #83981 Set of Fractions Keypops, 11
75653	" " (K 1/2), 11	80180	Spring, 6	83983	Set of Pneumatic Keypops Including #72708 Set of Fractions Keypops, 11
75654	" " (L 3/4), 11	80291	Governor Shell (Assem.) (Without Hub), 7		
75655	" " (C 1/8), 11	80297	End Shield, 9		
75656	" " (V 3/8), 11	80298	End Shield, 9		
75657	" " (B 5/8), 11	80299	End Play Spring, 9		
75658	" " (N 7/8), 11	80300	Switch, 9		
75674	Governor Resistance Strap, 8	80301	Rotor (Assem.), 9		
75675	Flat Type Resistance Short Circuiting Strap, 8	80302	Centrifugal Mechanism (With 80353 Spring), 9		
75687	Bearing, 1	80303	Fan, 9		
75689	Spring, 2	80305	Fibre Washer, 9		
75705	Celluloid Keypop (M ?), 11	80307	Outlet Bushing (Assem.), 9		
75750	Bakelite Washer, 10	80308	Fibre Bushing, 9		
75852	Celluloid Keypop (H #), 11	80309	Felt Washer, 9		
75913	Typebar #1 (With Pallet) (S), 11	80310	Felt Washer, 9		
75914	" #11 " " (J), 11	80311	Cup Washer, 9		
76484	Fan, 9	80312	Washer, 9		
77221	Bracket, 10	80313	Washer, 9		
77377	Hook - Left - Black, 10	80329	Condenser Cup, 10		
77378	" Right " " "	80330	Insulator, 10		
77384	Pneumatic Keypop (.,), 11	80334	Contact Terminal, 7		
77385	" " (= #), 11	80335	Clamping Plate, 7		
77399	Rivet, 10	80336	Insulator, 7		
77451	Stop, 5	80337	Bracket, 7		
77613	Filter Unit (Assem.), 10	80338	Governor Adjusting Bracket, 7		
77614	Filter Unit (Assem.), 10	80340	Brush Spring Plate, 7		
77810	Resistance (300 Ohms), 10	80341	Governor Brush & Speed Adjust- ing Bracket (Assem.), 7		
77811	Resistance (75 Ohms), 10	80342	6-40 x 23/64 Screw, 7		
77812	Post, 1	80351	8-36 x 5/16 Screw, 9		
77897	Filter Unit Container (Assem.), 10	80352	Center Contact Governor Comp. (With Hub for 3/8" Motor Shaft), 7		
77898	Bracket, 10	80353	Spring, 9		
77899	Filter Unit Container, 10	80354	Clamping Screw, 9		
77900	Retard Coil, 10	80355	4-48 x 7/16 Screw, 9		
77901	6-32x3/8 (4 1/8) Screw, 10	80356	Washer 1/32, 9		
77902	6-40x3/8 (2 3/8) Screw, 10	80357	4-48 x 1/4 Screw, 9		
77903	Condenser - 1 M.F., 10	80358	Ball Bearing, 9		
77904	Condenser - 1/10 M.F., 10	80365	Spring, 1		
77905	Strap, 10	80433	Rotor (Assem.) (With Bearings and Switch), 9		
77906	8-32x3/8 (2 15/16) Screw, 10	80444	6-40 x 1/4 Screw, 7		
77907	Insulator, 10	80471	Clutch Spring, 6		
77911	Brush Cap - Special, 10	80530	Washer 3/64", 9		
77917	Bracket, 10	80531	Washer 1/64", 9		
77918	Insulator, 10	80548	1/25 H.P., 220 V., A.C. Motor (With Accessories), 9		
77919	Strap, 10	80555	Rotor (Assem.), 9		
77920	6-40x5/8 (1 15/16) Screw, 10	80556	Rotor (Assem.) (With Bearings and Switch), 9		
77921	Retard Coil, 10	80557	End Shield, 9		
77955	Washer, 3	80558	End Shield, 9		
78021	Base Plate (With Feet), 1	80559	Clamping Screw, 9		
78025	4-48 x 3/16 Screw, 9	80566	Bushing, 6		
78029	Oil Wick, 6	80581	Spring, 5		
78244	Oiler, 2	80754	Oiler, 9		
78245	6-32 x 7/8 Screw, 10	80840	Insulating Block, 8		
78301	10-32 x 5/8 Screw, 10	80911	Conduit, 8		
78398	Bushing, 7	80912	Resistance Unit (Assem.) - 50 Ohms, 8		
78399	Brush Holder Spring (With Brush), 7	80925	Connector, 8		
78400	Brush Holder Spring (With Brush), 7	80934	Tape Reel Retainer - Black, 10		
78403	Contact Brush, 7	80948	#10 x 1" Wood Screw, 8		
78437	Insulator, 7	81774	Washer, 10		
78438	Bushing, 7	81790	Keyboard Contact Cover, 6		
78439	Governor Shell, 7	82279	Clip, 10		
78443	Outer Contact Disc, 7	82281	Guide, 10		
78451	Cover, 7	82283	Synchronous Motor 1/40 H.P., 110 V., 60 Cycle, A.C., 9		
78476	Field Core (for 70735), 9				
78477	Field Coils (for 70735), 9				
78479	Field Core (for 73644), 9				
78480	Field Coils (for 73644), 9				
78495	Governor Shell (Assem.), 7				
78496	Outer Disc Contact Spring, 7				
78497	Inner Disc Contact Spring, 7				