

BULLETIN No. 1028
ISSUE 2
FEBRUARY, 1936

TELETYPE

PRINTING TELEGRAPH SYSTEMS

PARTS

MODEL 14 TYPE BAR TAPE PRINTER
(W. U. T. CO. MODEL 2 SIMPLEX)



TELETYPE

PRINTING TELEGRAPH SYSTEMS

PARTS

MODEL 14 TYPE BAR TAPE PRINTER
(W. U. T. CO. MODEL 2 SIMPLEX)



MEMBER OF
CORPORATION

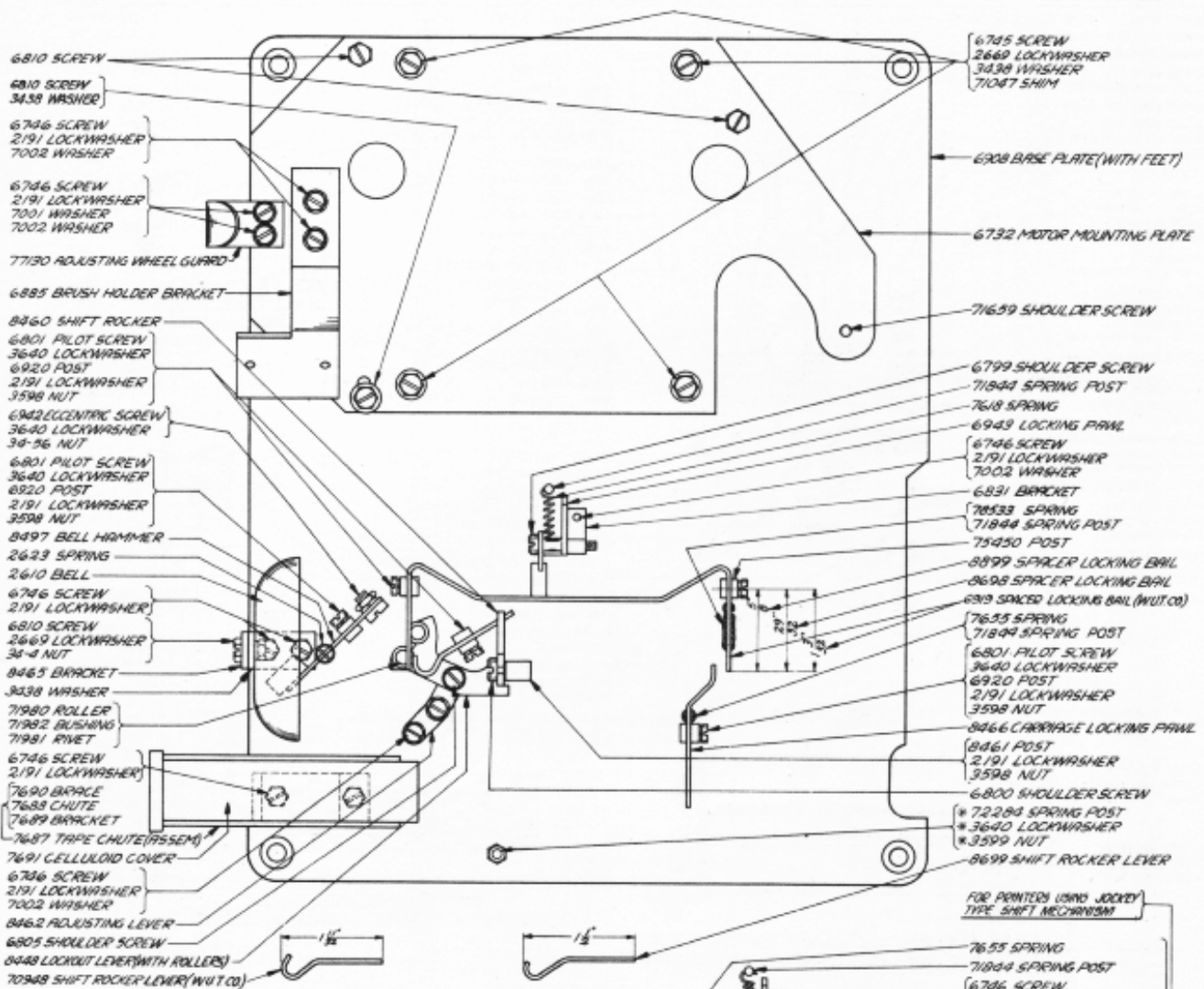
SUBSIDIARY OF

Western Electric Company

CHICAGO, U.S.A.

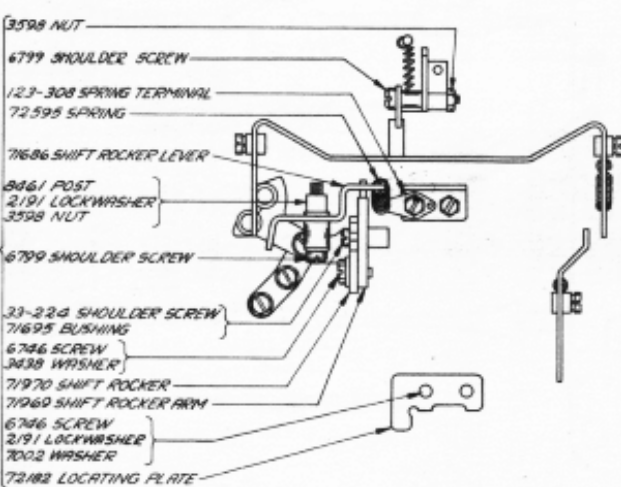
ALPHABETICAL INDEX

| | Page |
|---|----------------|
| Base (Keyboard) | 6 |
| Base (Receiver) | 2 |
| Base Plate (Typing Unit) | 1 |
| Cable (Keyboard) | 6 |
| Cable (Receiver) | 2 |
| Code Bars | 3, 11 |
| Condenser | 6 |
| Copy Holders | 10 |
| Cords (Power and Line) | 2 |
| Covers | 10 |
| Function Bars and Springs | 11 |
| Gear (Keyboard) | 7 |
| Gears (Keyboard Intermediate) | 2 |
| Gears (For Receiver Base with Tape Signal Bell) | 7 |
| Governor | 8 |
| Guard (Main Bail) | 5 |
| Keyboard Shaft (Assem.) | 7 |
| Keypops | 6, 11 |
| Key Levers and Springs | 6 |
| Main Bracket | 3 |
| Main Shaft (Assem.) | 5 |
| Main Shaft Bracket | 5 |
| Message Line Guides | 10 |
| Motors | 8, 9 |
| Notes of Explanation | 12, 13 |
| Numerical Index | 14, 15, 16, 17 |
| Pad - Felt (Keyboard and Receiver) | 2, 6 |
| Platen Carriage (Assem.) | 2 |
| Pull Bars and Springs | 3, 11 |
| Range Finder (Assem.) | 4 |
| Resistance (Flat Type) | 6 |
| Resistance Units (Governor and 25 Cycle Power) | 2, 7 |
| Ribbon Feed Mechanism | 3, 4 |
| Ribbon Reverse Mechanism | 3, 4 |
| Selector Bars | 6 |
| Selector Mechanism | 4 |
| Shift Mechanism | 1 |
| Slip Connection (Assem.) | 5 |
| Switches (Motor Control) | 7 |
| Tape Reel Containers and Retainers | 10 |
| Terminal Blocks (Assem.) | 2, 7 |
| Transmitter (Assem.) | 7 |
| Type Bars | 4, 11 |
| Type Bar Basket (Assem.) | 4 |
| Type Bar Pallets | 11 |

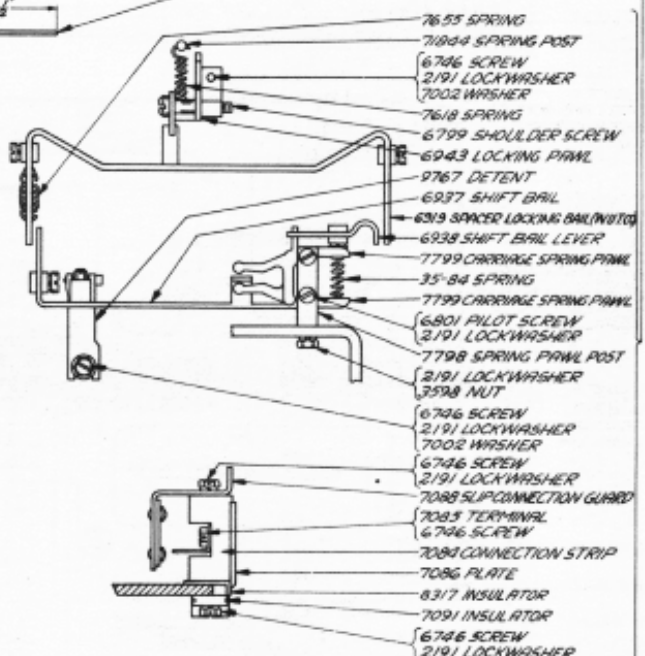


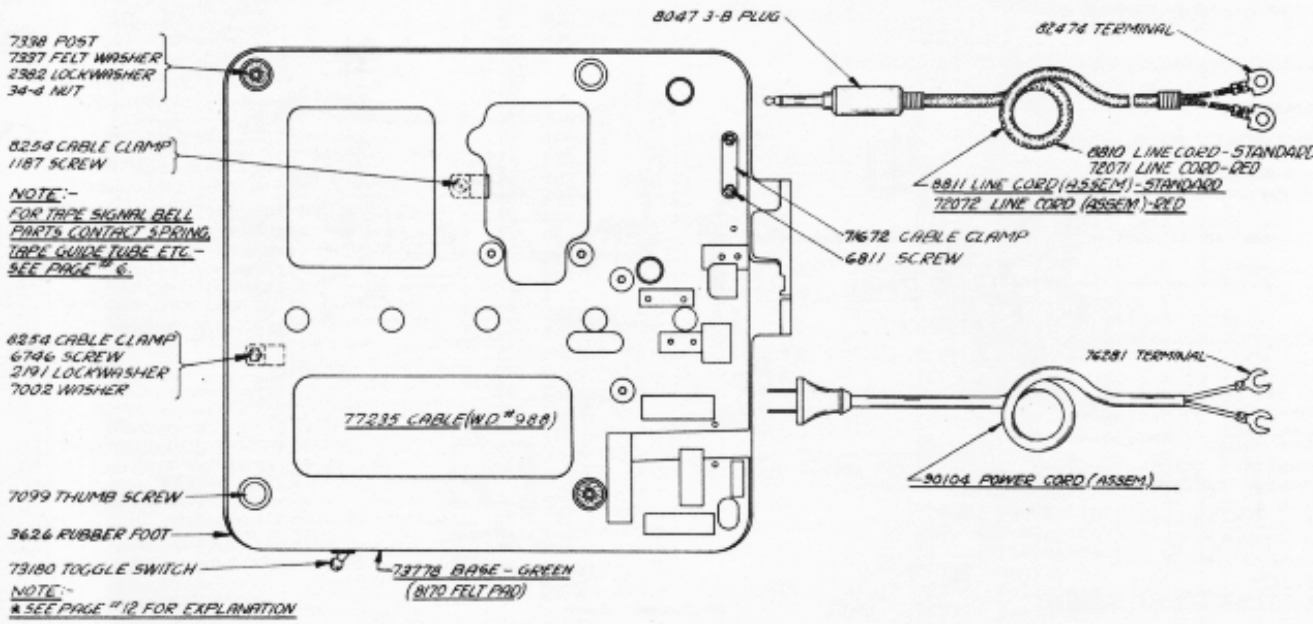
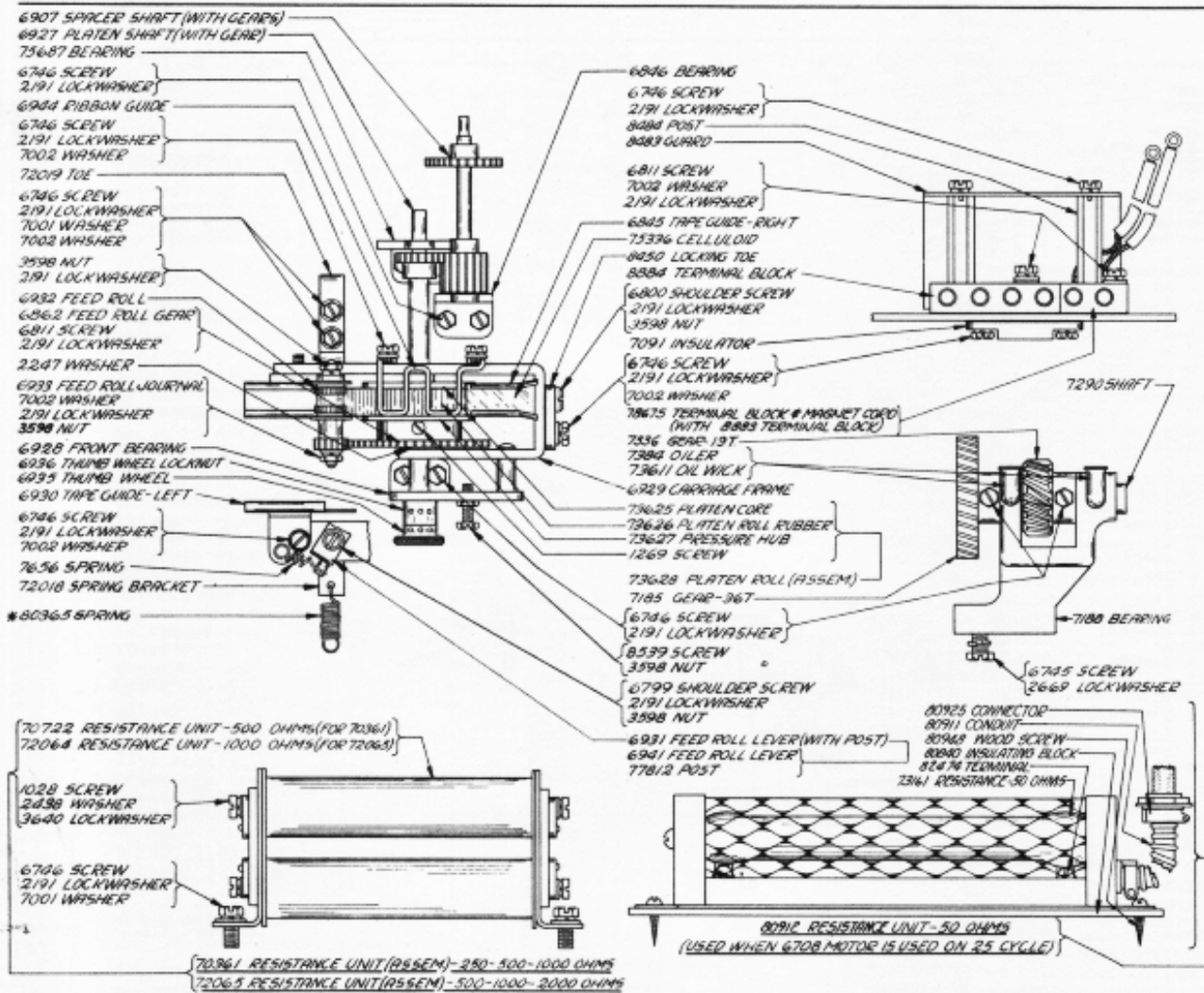
FOR PRINTERS USING JODDY TYPE SHIFT MECHANISM

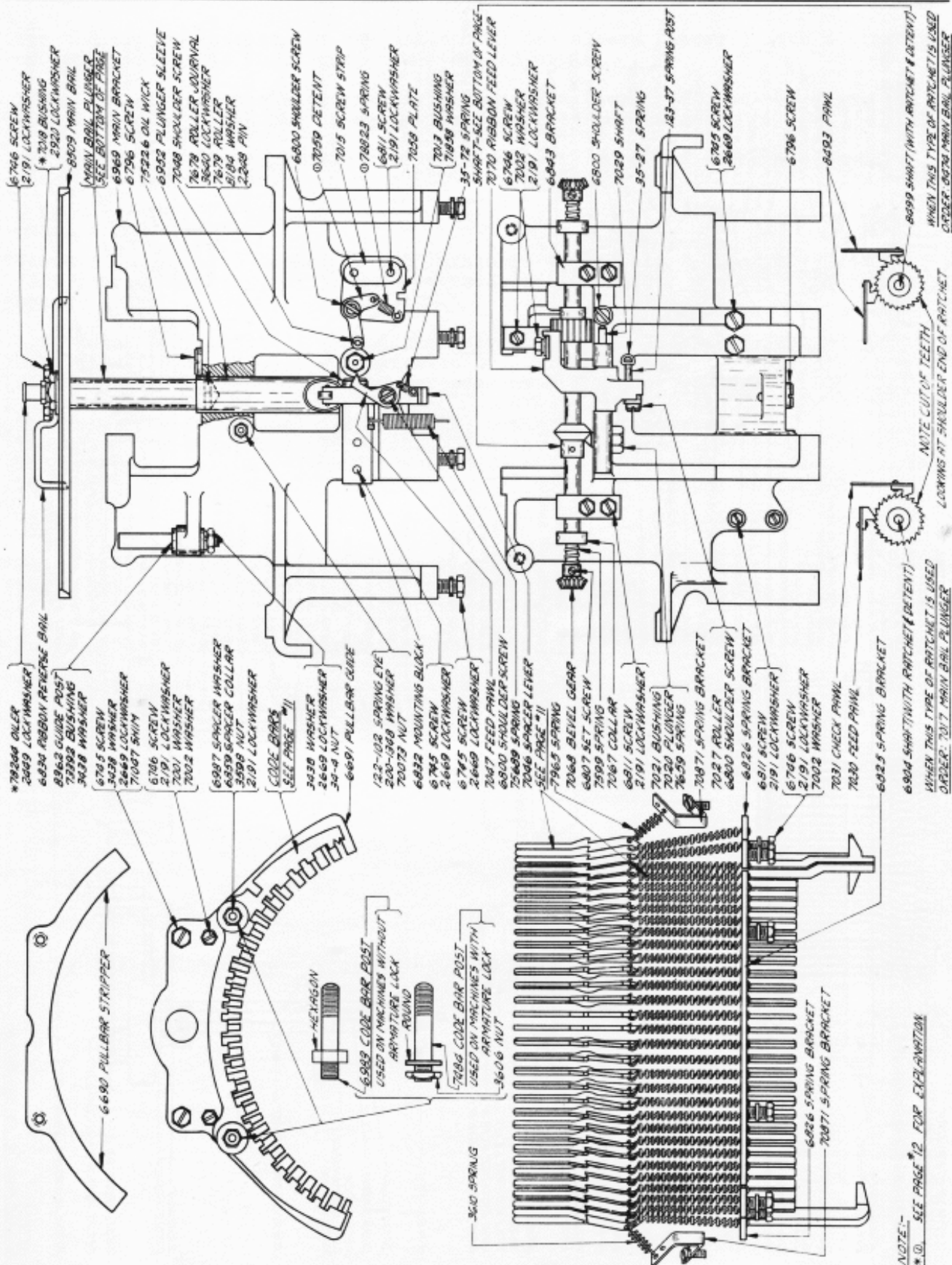
FOR PRINTERS USING NEW STYLE LOCKING TYPE SHIFT MECHANISM

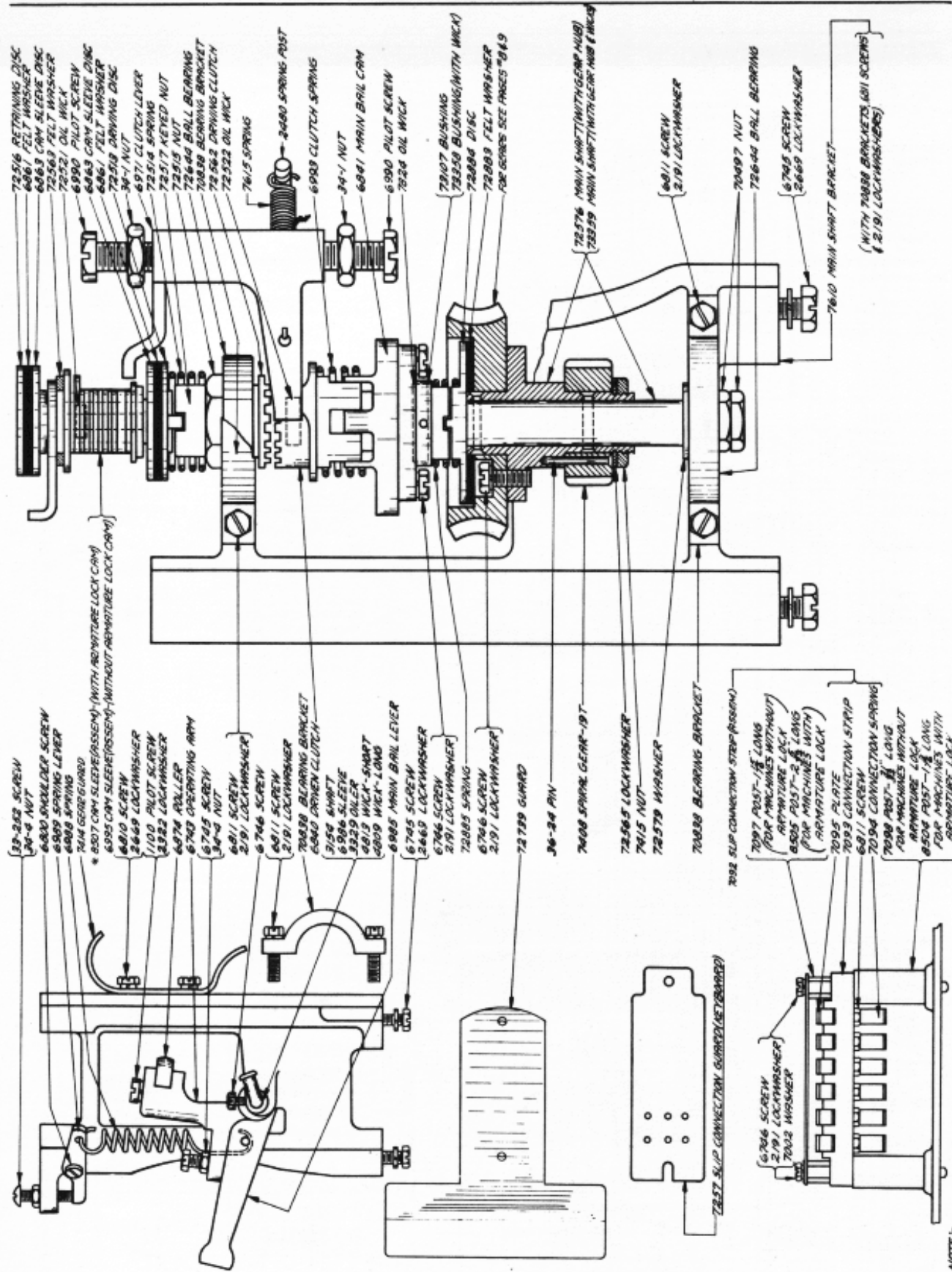


NOTE:
* SEE PAGE 12 FOR EXPLANATION.

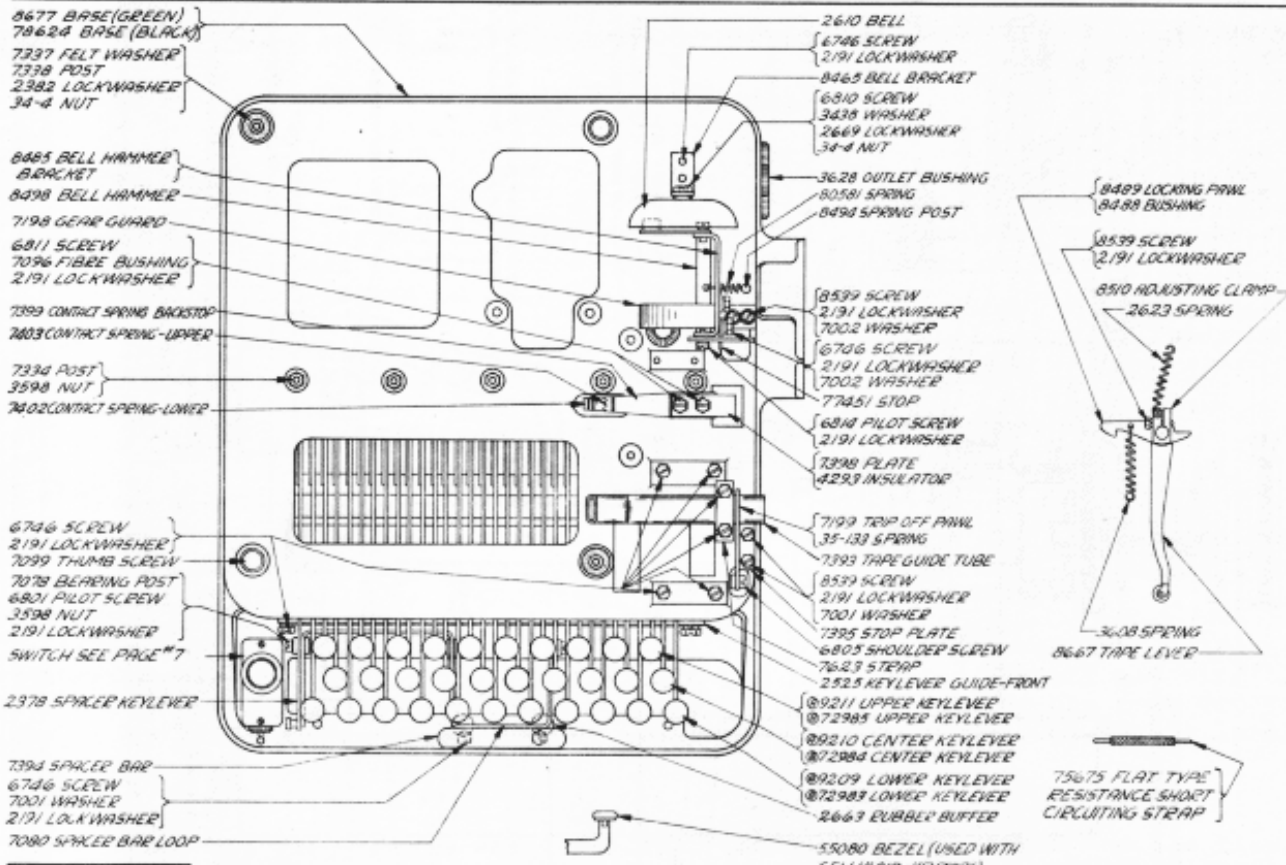




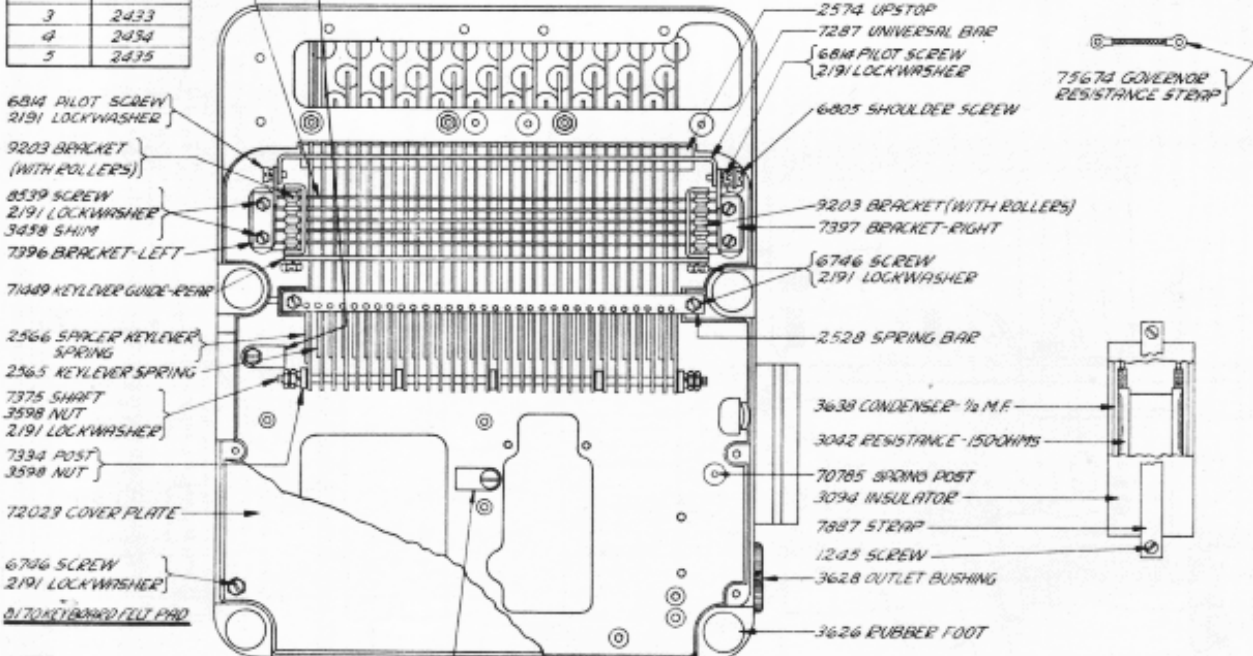




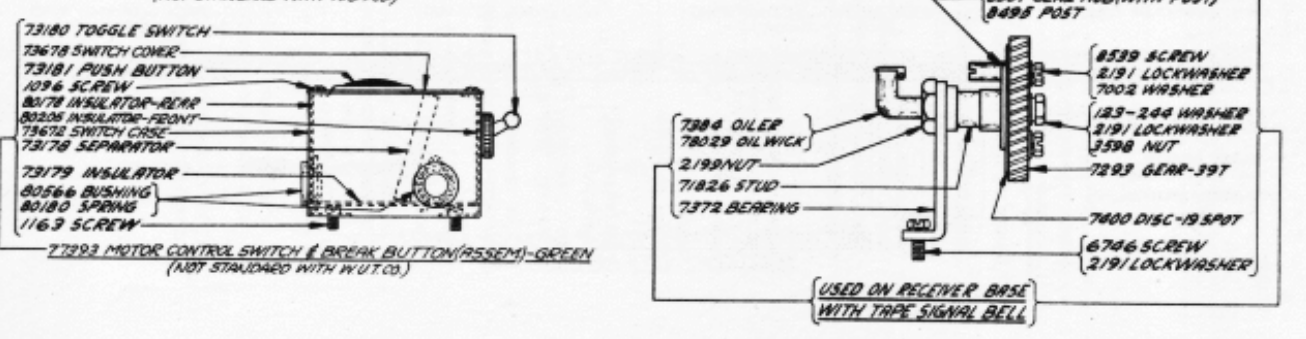
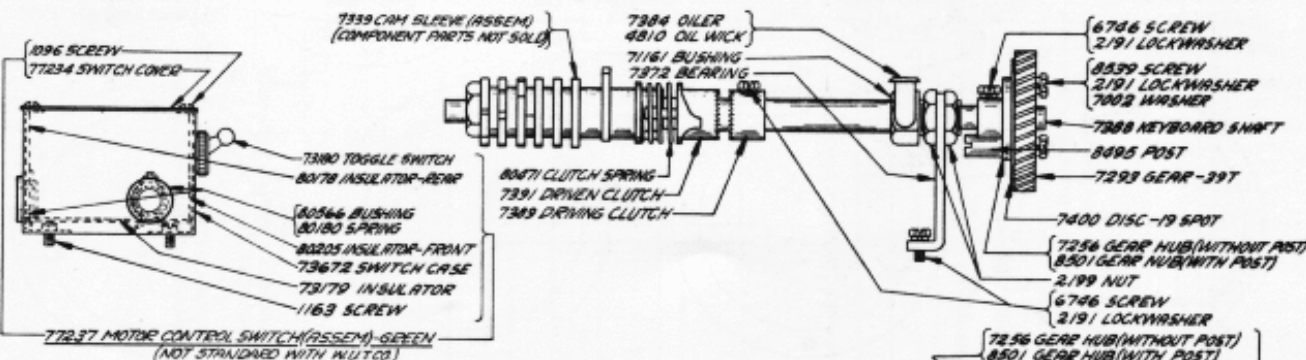
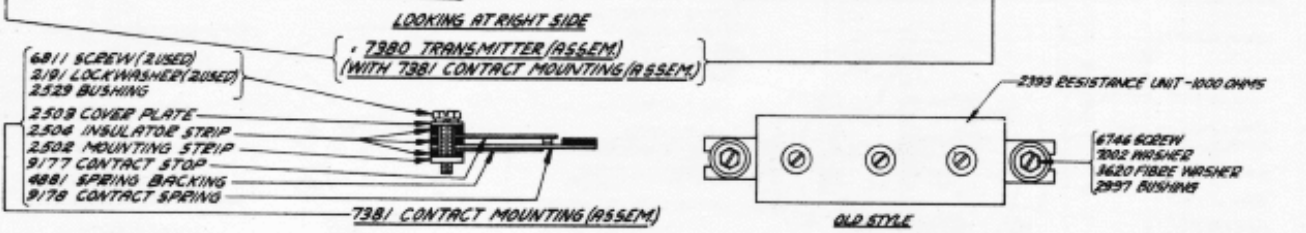
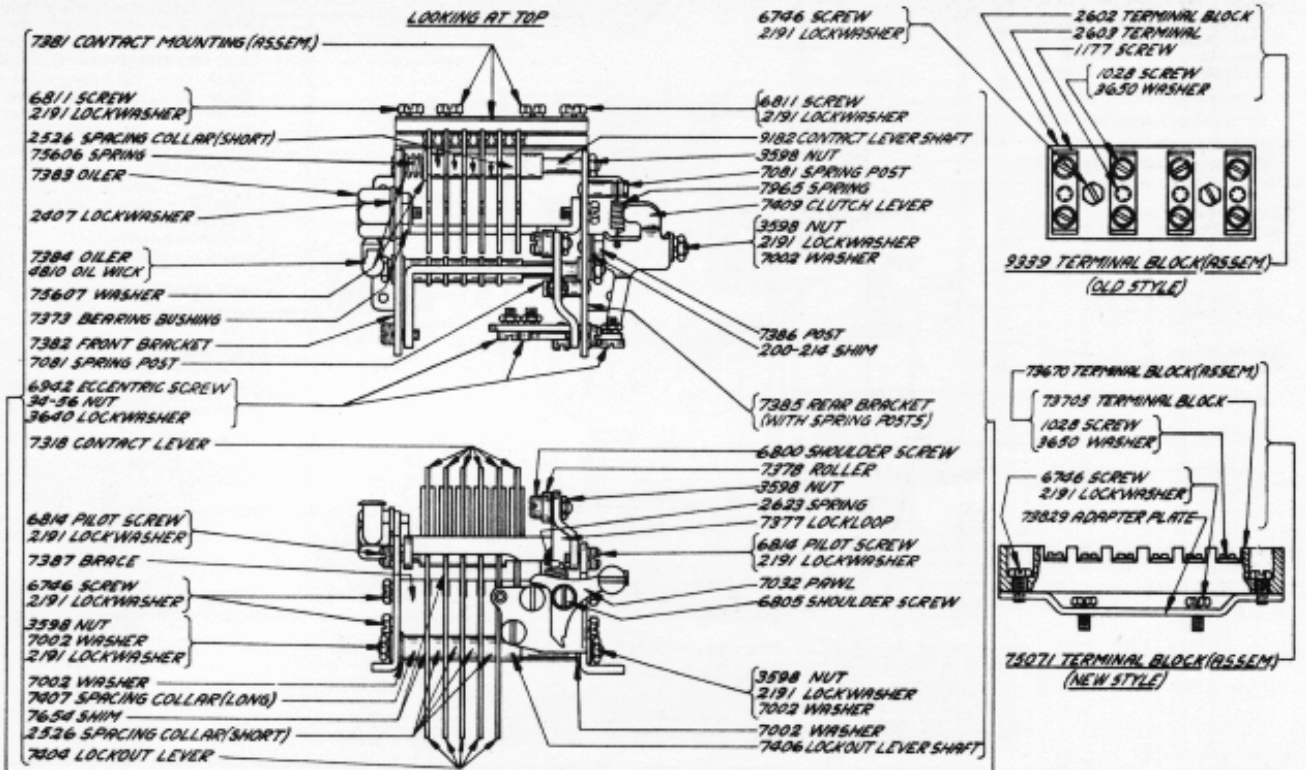
NOTE - SEE PAGE 18 FOR EXPLANATION

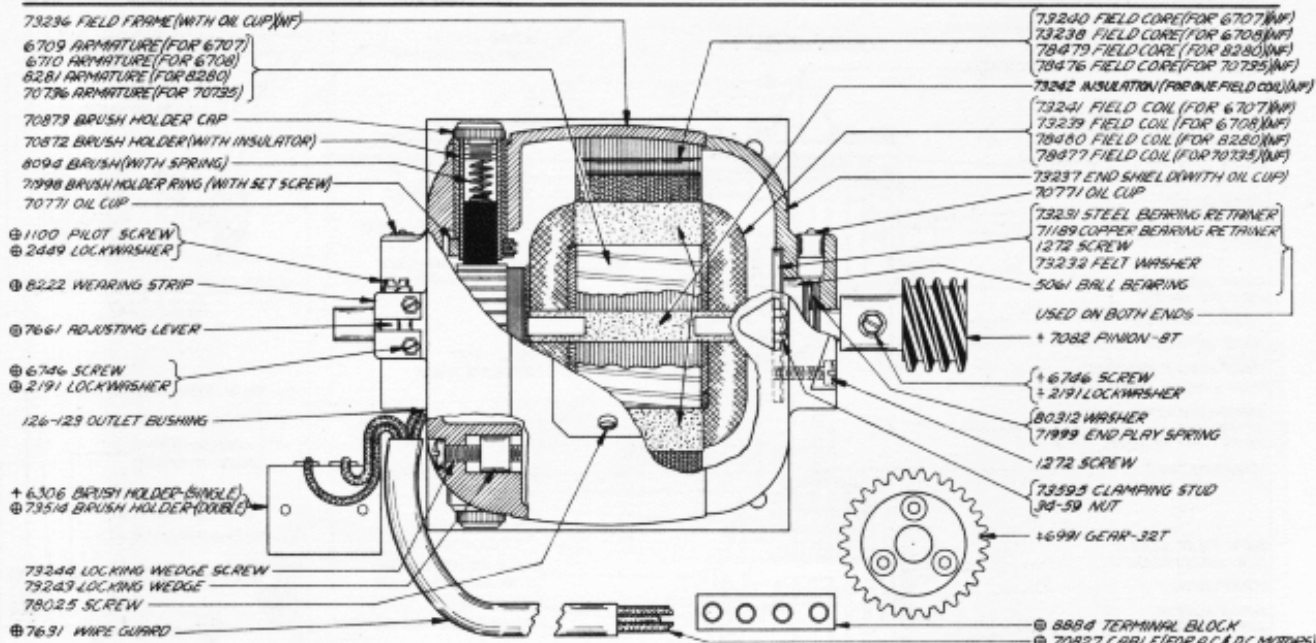


| SELECTOR BARS | |
|-------------------|------------|
| NO STAMPED ON BAR | CATALOG NO |
| 1 | 2431 |
| 2 | 2432 |
| 3 | 2433 |
| 4 | 2434 |
| 5 | 2435 |

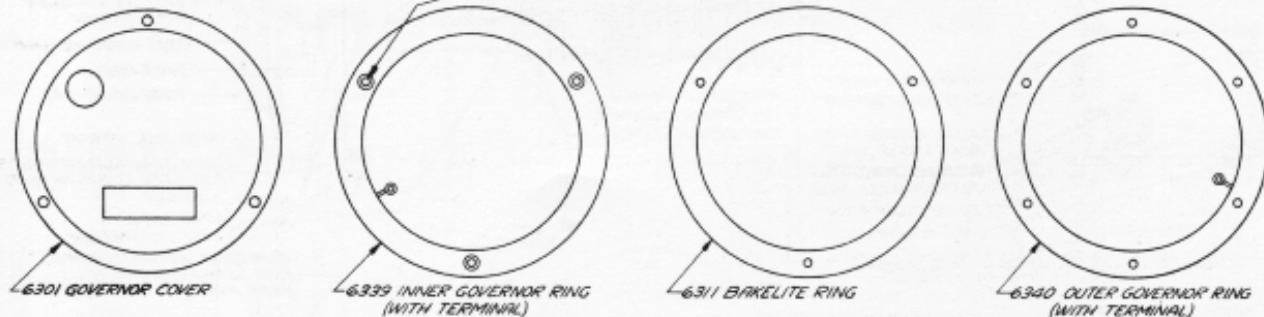
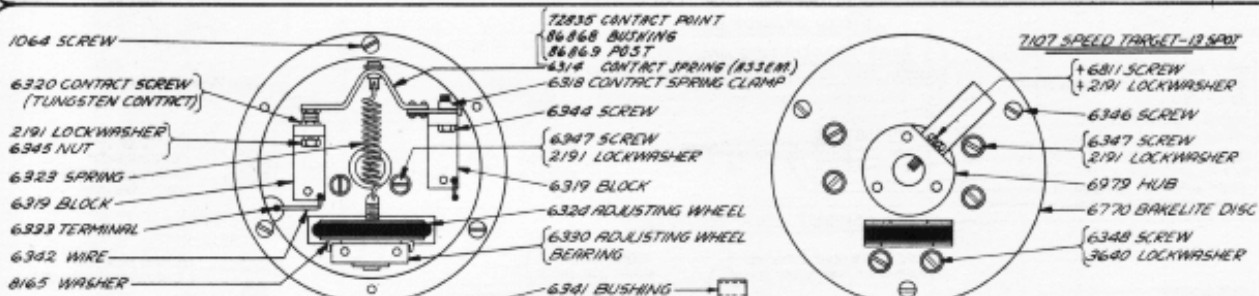


NOTE -
⊗ FOR USE WITH PNEUMATIC KEYTOPS
⊙ FOR USE WITH CELLULOID KEYTOPS





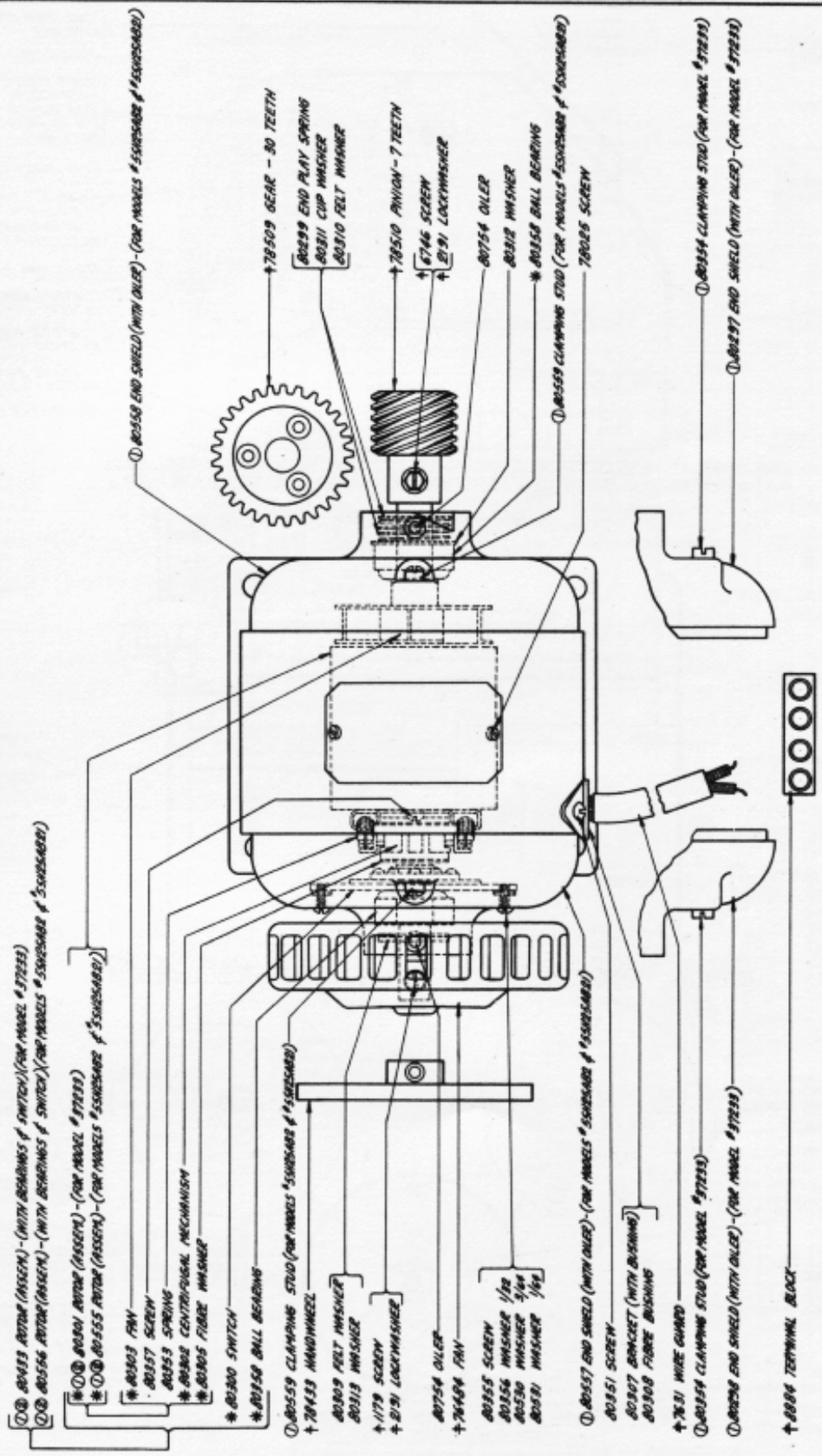
6707 MOTOR 1/10 H.P. 110V. D.C. (EXCLUDES PARTS MARKED + AND ⊕) - G.E. MODEL # 88479
 78682 MOTOR (WITH ACCESSORIES) (INCLUDES 6707 AND PARTS MARKED ⊕)
 6708 MOTOR 1/10 H.P. 110V. A.C. (EXCLUDES PARTS MARKED + AND ⊕) - G.E. MODEL # 88478
 78681 MOTOR (WITH ACCESSORIES) (INCLUDES 6708 AND PARTS MARKED ⊕)
 6280 MOTOR 1/20 H.P. 220V. D.C. (EXCLUDES PARTS MARKED + AND ⊕) - G.E. MODEL # 31382
 70795 MOTOR 1/20 H.P. 220V. A.C. (EXCLUDES PARTS MARKED + AND ⊕) - G.E. MODEL # 31380



THE 6339 INNER GOVERNOR RING, 6340 OUTER GOVERNOR RING, 6311 BAKELITE RING & 6770 BAKELITE DISC ARE MADE OVERSIZE AND CAN BE USED FOR REPLACEMENT ONLY AT POINTS WHERE FACILITIES ARE AVAILABLE FOR TURNING THEM DOWN AFTER RINGS HAVE BEEN ASSEMBLED IN THE GOVERNOR



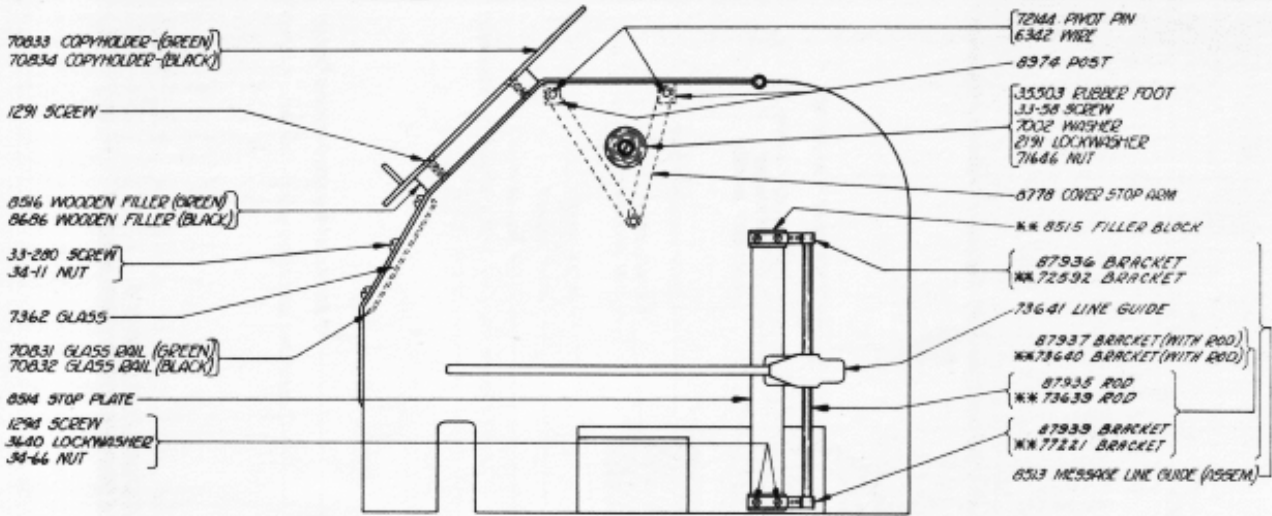
WESTERN UNION - PARTS MARKED * NOT FURNISHED SEPARATELY
 ORDER #80433 (G.E. MODEL #37233) OR #80556 (G.E. MODEL #55056AB) - #55056AB
 AND RETURN DEFECTIVE ROTOR TO REPAIR SHOP



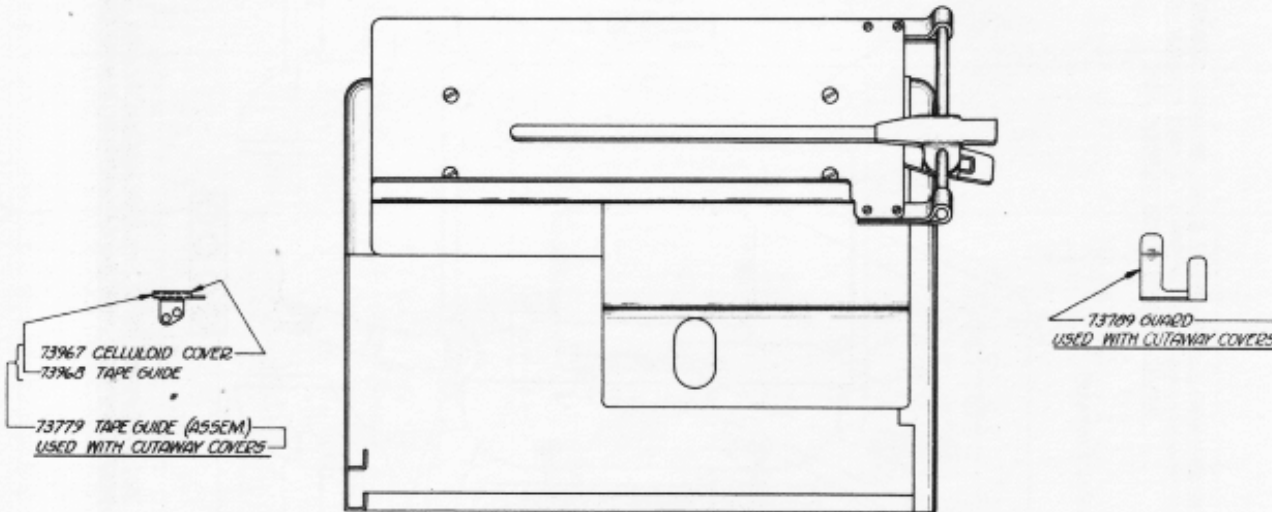
- ① 80153 ROTOR (ASSEM.) - (WITH BEARINGS OF SWITCH) (FOR MODEL #37233)
- ① 80156 ROTOR (ASSEM.) - (WITH BEARINGS OF SWITCH) (FOR MODELS #55056AB & #55056AB)
- * 80153 FAN
- * 80157 SCREW
- * 80159 SPRING
- * 80162 CENTRIFUGAL MECHANISM
- * 80165 FIBRE WASHER
- * 80160 SWITCH
- * 80158 BALL BEARINGS
- ① 80159 CLAMPING STUD (FOR MODELS #55056AB & #55056AB)
- ① 78433 MINOWHEEL
- 80169 FELT WASHER
- 80113 WASHER
- ① 1179 SCREW
- ① 8191 LOCKWASHER
- 80754 OILER
- ① 78464 FAN
- 80155 SCREW
- 80156 WASHER 1/32
- 80150 WASHER 5/64
- 80151 WASHER 1/8
- ① 80157 END SHIELD (WITH OILER) - (FOR MODELS #55056AB & #55056AB)
- 80151 SCREW
- 80167 BRACKET (WITH BRUSHING)
- 80168 FORGE BRUSHING
- ① 7831 WIRE GUARD
- ① 80157 CLAMPING STUD (FOR MODEL #37233)
- ① 80167 END SHIELD (WITH OILER) - (FOR MODEL #37233)
- ① 80156 TERMINAL BLOCK
- ① 80158 END SHIELD (WITH OILER) - (FOR MODELS #55056AB & #55056AB)
- ① 80159 END PLAY SPRING
- ① 80161 CUP WASHER
- ① 80160 FELT WASHER
- ① 78510 PINION - 7 TEETH
- ① 8746 SCREW
- ① 8191 LOCKWASHER
- 80754 OILER
- 80162 WASHER
- ① 80158 BALL BEARING
- ① 80159 CLAMPING STUD (FOR MODELS #55056AB & #55056AB)
- 78026 SCREW
- 80154 CLAMPING STUD (FOR MODEL #37233)
- ① 80167 END SHIELD (WITH OILER) - (FOR MODEL #37233)

78217 SYNCHRONOUS MOTOR 150 H.P. 1000 R.P.M. 60 CYCLES (G.E. MODEL #37233) (EXCLUDES PARTS MARKED *)
 80153 SYNCHRONOUS MOTOR 150 H.P. 1000 R.P.M. 60 CYCLES A.C. (G.E. MODEL #55056AB) (EXCLUDES PARTS MARKED *)

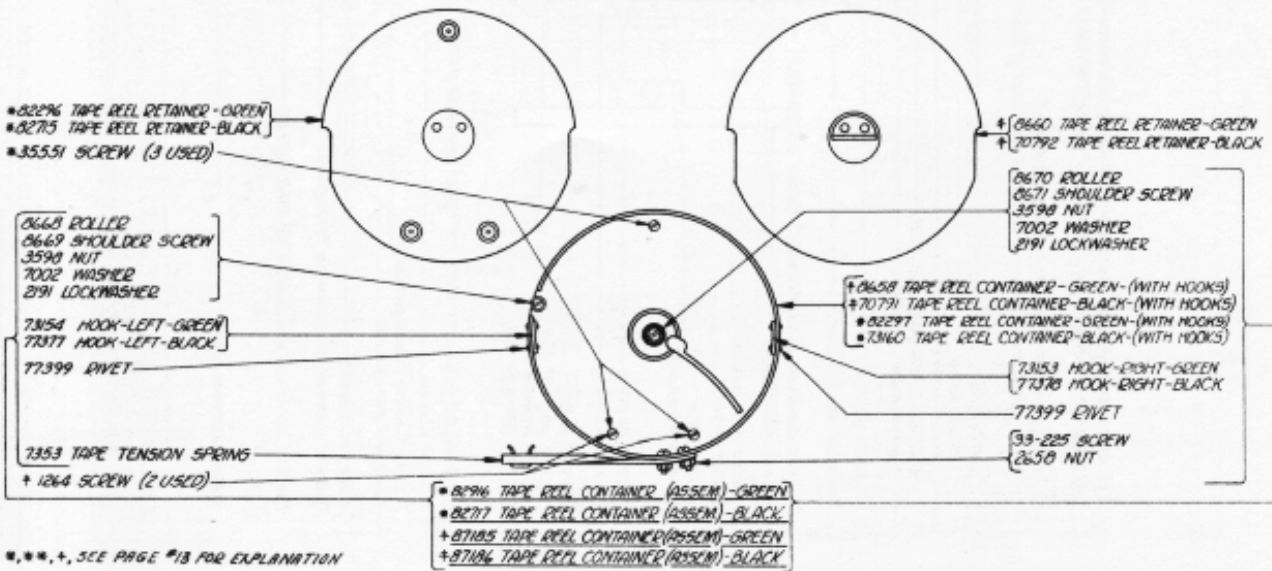
NOTE:-
 * ①, ②, ③. SEE PAGE #13 FOR EXPLANATION.



0652 SENDING-RECEIVING PRINTER COVER (ASSEM.) (WITH COPYHOLDER AND MESSAGE LINE GUIDE) - GREEN
0603 SENDING-RECEIVING PRINTER COVER (ASSEM.) (WITH COPYHOLDER AND MESSAGE LINE GUIDE) - BLACK



77233 SENDING-RECEIVING PRINTER CUTAWAY COVER (ASSEM.) (WITH ACCESSORIES) (INCLUDES COPYHOLDER & MESSAGE LINE GUIDE, 73779 TAPE GUIDE (ASSEM.) AND 73789 GUARD) - GREEN



***, +, SEE PAGE #18 FOR EXPLANATION

NOTES OF EXPLANATION

Pages 1 and 2

*The 2623 spring and 8468 spring post which were used for carriage return operation have been replaced by 80365 spring (shown on page 2) and 72284 spring post (shown on page 1).

The 72284 spring post is threaded and is fastened to the base plate by means of a 3599 nut and a 3640 lock washer applied underneath the plate.

The 80365 spring must be used with the 72284 spring post.

Page 3

*The 7418 oiler has been replaced by a 78244 oiler which is threaded into the new style 7018 bushing. The old style 7018 bushing must be replaced by the new style which is tapped, when installing a 78244 oiler.

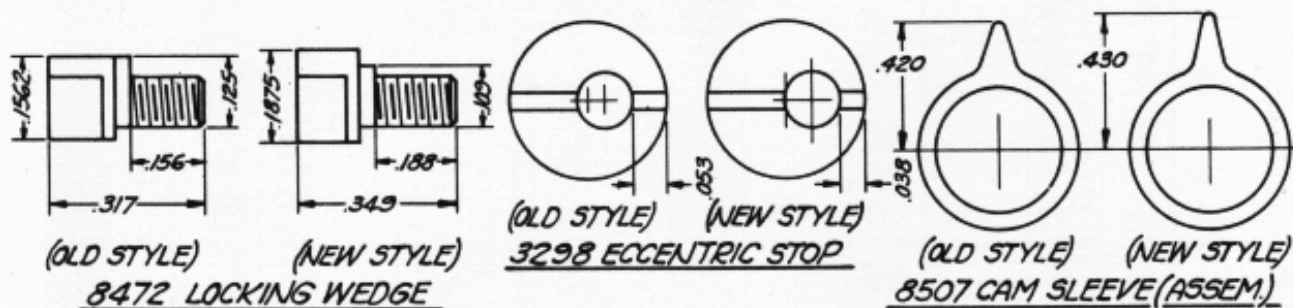
- (1) The 7059 detent lever has been redesigned so as to provide more clearance between the detent lever spring and the 7058 plate, thereby allowing the proper spring tension to be obtained. The 35-27 spring has been replaced by 78823 spring which must be used with the new style 7059 detent lever.

Page 4

*When the 71699 screw was tightened, the 71696 range scale and the 71697 clamping plate had a tendency to bind. In order to prevent this, the 71699 screw and 70885 washer, which were used together, have been replaced by a 78597 shoulder screw and a 78596 washer. This new shoulder screw and washer must be used together as they are not interchangeable with 71699 screw and 70885 washer.

Pages 4 and 5

- (1) The changes involving 8472 locking wedge, 3298 eccentric stop, shown on page 4, and 8507 cam sleeve (assem.) shown on page 5, may be noted in the following sketches:



The diameter of the head of the new style 8472 locking wedge has been increased .0313", and the length of the threaded portion has been increased .032", while the shoulder has been decreased .016".

The mounting hole in the new style 3298 eccentric stop has been offset .015" more than the old style.

The cam projections of the new style 8507 cam sleeve (assem.) have a diameter of .860", which is .020" more than the old style.

If an old style cam sleeve (assem.) is used, either an old or new style locking wedge, or an old or new style eccentric may be used.

If, however, a new style cam sleeve (assem.) is used, only the new style locking wedge and new style eccentric can be used.

Page 9

*Western Union parts marked *, not furnished separately - Order 80433 (for 78217) or 80556 (for 80553) and return defective rotor, complete, to repair shop.

- (1) G.E. Model 37233 (78217) - Superseded by G.E. Model 38367 (80553).
G.E. Model 38367 (80553) - Superseded by G.E. Model 5SH25AB2 (80553).
G.E. Model 5SH25AB2 (80553) - Superseded by G.E. Model 5SH25AB21 (80553).
- (2) The rotor for G.E. Model 37233 (78217) motor is not stamped.
The rotor for G.E. Model 38367 (80553) motor is stamped 4277621-2.
The rotor for G.E. Model 5SH25AB2 (80553) motor is stamped 4277621-2.
The rotor for G.E. Model 5SH25AB21 (80553) motor is stamped 4277621-2.

Page 10

*Parts marked * are for double tape operation.
82295 set of parts to convert to double tape operation - green.
82705 set of parts to convert to double tape operation - black.

† Parts marked † are for single tape operation.

Parts not marked are for both double and single tape operation.

**Parts marked ** are old style parts, furnished for maintenance only. When message line guide (assem.) 8513 is ordered, only the new style will be furnished.

NUMERICAL INDEX

| | | | | | |
|----------|---|------|---|------|--|
| M-177 | Magnet coil, 4 | 3058 | (E 3), 11 | 6708 | Motor 1/25 H.P., 110 V., A.C., 8 |
| 33-58 | Screw, 10 | 3060 | (G 4), 11 | 6709 | Armature, 8 |
| 33-111 | 2-56 x 3/16 screw, 4 | 3061 | (H 5), 11 | 6710 | Armature, 8 |
| 33-224 | 6-40 x 1/4 shoulder screw, 1 | 3062 | (I 8), 11 | 6732 | Motor mounting plate, 1 |
| 33-225 | 6-32 x 3/16 screw, 10 | 3063 | (J 1), 11 | 6743 | Operating arm, 5 |
| 33-252 | 10-32 x 3/4 screw, 5 | 3064 | (K 1), 11 | 6745 | 10-32 x 1/2 screw, 1, 2, 3, 4, 5 |
| 33-280 | 2-56 x 3/16 screw, 10 | 3065 | (L 1), 11 | 6746 | 6-40 x 5/16 screw, 1, 2, 3, 4, 5, 6, 7, 8, 9 |
| 33-336 | Screw, 8 | 3068 | (O 9), 11 | 6747 | Selector post 53/64, long (for machine without armature lock), 4 |
| 34-1 | 1/4-32 hex. nut, 5 | 3069 | (P 0), 11 | 6770 | Bakelite disc, 8 |
| 34-4 | 10-32 hex. nut, 1, 2, 3, 5, 6 | 3070 | (Q 1), 11 | 6796 | 10-32 x 1/4 screw, 3, 4, |
| 34-11 | 2-56 hex. nut, 4, 10 | 3071 | (R 4), 11 | 6799 | 6-40 x 7/16 shoulder screw, 1, 2, 4 |
| 34-56 | 4-40 hex. nut, 1, 4, 7 | 3073 | (T 5), 11 | 6800 | 6-40 x 1/4 shoulder screw, 1, 2, 3, 4, 5, 7 |
| 34-59 | 10-30 hex. nut, 8 | 3074 | (U 7), 11 | 6801 | 4-40 pilot screw, 1, 4, 6 |
| 34-66 | 4-36 hex. nut, 10 | 3075 | (V 1), 11 | 6805 | 6-40 x 1/8 shoulder screw, 1, 4, 6, 7 |
| 35-27 | Spring, 3 | 3076 | (W 2), 11 | 6807 | 6-40 x 3/16 set screw, 3, 4 |
| 35-72 | Spring, 3 | 3077 | (X 1), 11 | 6810 | 10-32 x 3/8 screw, 1, 5, 6 |
| 35-84 | Spring, 1 | 3078 | (Y 6), 11 | 6811 | 6-40 x 5/8 screw, 2, 3, 4, 5, 6, 7, 8 |
| 35-133 | Spring, 6 | 3079 | (Z 8), 11 | 6814 | 6-40 pilot screw, 6, 7 |
| 36-24 | Pin, 5 | 3080 | Blank, 11 | 6825 | Spring bracket, 3 |
| 122-102 | Spring eye, 3 | 3081 | Figs., 11 | 6826 | Spring bracket, 3 |
| 123-37 | Spring post, 3 | 3082 | Ltrs., 11 | 6830 | Stop pawl latch, 4 |
| 123-244 | Washer, 7 | 3094 | Insulator, 6 | 6831 | Bracket, 1 |
| 123-308 | Spring terminal, 1 | 3154 | Shaft, 5 | 6832 | Mounting block, 3 |
| 126-123 | Outlet bushing, 8 | 3298 | Eccentric stop, 4 | 6834 | Ribbon reverse bail, 3 |
| 200-214 | Shim, 7 | 3329 | Oiler, 5 | 6836 | Magnet yoke, 4 |
| 200-1348 | Washer, 3 | 3438 | Washer, 1, 3, 4, 6 | 6840 | Driven clutch, 5 |
| 1028 | 4-40 x 1/4 screw, 2, 4, 7 | 3458 | Shim, 6 | 6841 | Main ball cam, 5 |
| 1030 | 6-40 x 1/4 shoulder screw, 4 | | <u>Pneumatic Keypops</u> | 6843 | Bracket, 3 |
| 1064 | 6-32 x 1/4 screw, 8 | 3482 | (M 4), 11 | 6845 | Tape guide - right, 2 |
| 1073 | Thumb screw, 4 | 3577 | (M 7), 11 | 6846 | Bearing, 2 |
| 1096 | 4-36 x 1/8 screw, 7 | 3598 | 6-40 hex. nut, 1, 2, 3, 4, 6, 7, 10 | 6850 | Bell crank, 4 |
| 1100 | 1/4-32 pilot screw, 5, 8 | 3599 | 4-40 hex. nut, 1 | 6859 | Spacer collar, 3 |
| 1160 | 6-40 x 5/16 screw, 4 | 3606 | 6-40 hex. nut, 3 | 6861 | Felt washer, 5 |
| 1163 | 4-40 x 3/16 screw, 7 | 3608 | Spring, 6 | 6862 | Feed roll gear, 2 |
| 1177 | 4-40 x 5/16 screw, 7 | 3610 | Spring, 3, 11 | 6863 | Cam sleeve disc, 5 |
| 1179 | 6-40 x 5/8 screw, 9 | 3620 | Fibre washer, 7 | 6874 | Roller, 5 |
| 1187 | 10-32 x 1/4 screw, 2, 6 | 3626 | Rubber foot, 2, 6 | 6875 | Code bar #1, 11 |
| 1245 | 10-32 x 1 screw, 6 | 3628 | Outlet bushing, 6 | 6876 | Code bar #2, 11 |
| 1264 | 10-32 x 1/2 screw, 10 | 3638 | 1/2 M.F. condenser, 6 | 6877 | Code bar #3, 11 |
| 1269 | 6-40 x 1/2 screw, 2 | 3640 | Lock washer, 1, 2, 3, 4, 7, 8, 10 | 6878 | Code bar #4, 11 |
| 1272 | 6-40 x 11/16 screw, 8 | 3650 | Washer, 7 | 6879 | Code bar #5, 11 |
| 1291 | 6-32 x 3/4 screw, 10 | 4293 | Insulator, 6 | 6884 | Bracket, 4 |
| 1294 | 4-36 x 1/2 screw, 10 | 4809 | Wick - long, 5 | 6885 | Brush holder bracket, 1 |
| 2191 | Lock washer, 1, 2, 3, 4, 5, 6, 7, 8, 9, 10 | 4810 | Oil wick, 7 | 6890 | Type bar segment, 4 |
| 2199 | 7/16-32 hex. nut, 7 | 4813 | Wick - short, 5 | 6893 | Backstop bracket, 4 |
| 2201 | 5/16-32 hex. nut, 4 | 4814 | Lock washer, 4 | 6904 | Shaft (with ratchet and detent), 3 |
| 2247 | Washer, 2 | 4881 | Spring backing, 7 | 6907 | Spacer shaft (with gears), 2 |
| 2248 | Pin, 3 | 5061 | Ball bearing, 8 | 6908 | Base plate (with feet), 1 |
| 2322 | Lock washer, 5 | 5363 | Spring, 4 | 6909 | Stop pawl, 4 |
| 2378 | Spacer key lever, 6 | 6301 | Governor cover, 8 | 6915 | Code bar locking lever, 11 |
| 2382 | Lock washer, 2, 6 | 6305 | Governor brush (assem.), 8 | 6916 | Function bar, 11 |
| 2393 | Resistance unit-1000 ohms, 7 | 6306 | Brush holder (single), 8 | 6917 | Function bar, 11 |
| 2407 | Lock washer, 7 | 6311 | Bakelite ring, 8 | 6918 | Link, 4 |
| 2422 | Lock washer, 4 | 6314 | Contact spring (with con- tact point), 8 | 6919 | Spacer locking bail, 1 |
| 2431 | Selector bar #1, 6 | 6318 | Contact spring clamp, 8 | 6920 | Post, 1 |
| 2432 | Selector bar #2, 6 | 6319 | Block, 8 | 6927 | Platen shaft (with gear), 2 |
| 2433 | Selector bar #3, 6 | 6320 | Contact screw (Tungsten contact), 8 | 6928 | Front bearing, 2 |
| 2434 | Selector bar #4, 6 | 6323 | Spring, 8 | 6929 | Carriage frame, 2 |
| 2435 | Selector bar #5, 6 | 6324 | Adjusting wheel, 8 | 6930 | Tape guide - left, 2 |
| 2438 | Washer, 2, 4 | 6330 | Adjusting wheel bearing, 8 | 6931 | Feed roll lever (with post), 2 |
| 2449 | Lock washer, 3, 8 | 6333 | Terminal, 8 | 6932 | Feed roll, 2 |
| 2480 | Spring post, 5 | 6339 | Inner governor ring (with terminal), 8 | 6933 | Feed roll journal, 2 |
| 2502 | Mountain strip, 7 | 6340 | Outer governor ring (with terminal), 8 | 6935 | Thumbwheel, 2 |
| 2503 | Cover plate, 7 | 6341 | Bushing, 8 | 6936 | Thumbwheel lock nut, 2 |
| 2504 | Insulator strip, 7 | 6342 | Wire, 8, 10 | 6937 | Shift bail, 1 |
| 2525 | Key lever guide - front, 6 | 6344 | 6-32 x 11/32 screw, 8 | 6938 | Shift bail lever, 1 |
| 2526 | Spacing collar (short), 7 | 6345 | 6-32 hex. nut, 8 | 6941 | Feed roll lever, 2 |
| 2528 | Spring bar, 6 | 6346 | 6-32 x 23/32 screw, 8 | 6942 | Eccentric screw, 1, 4, 7 |
| 2529 | Bushing, 7 | 6347 | 6-32 x 3/8 screw, 8 | 6943 | Locking pawl, 1 |
| 2565 | Key lever spring, 6 | 6348 | 4-36 x 3/4 screw, 8 | 6944 | Ribbon guide, 2 |
| 2566 | Spacer key lever spring, 6 | 6354 | Brush cap, 8 | 6952 | Plunger sleeve, 3 |
| 2574 | Key lever upstop, 6 | 6357 | Brush spring, 8 | 6954 | Leather strip, 4 |
| 2602 | Terminal block, 7 | 6358 | Brush, 8 | 6955 | Type bar backstop, 4 |
| 2603 | Terminal, 7 | 6685 | Sword, 4 | 6962 | Post - short, 4 |
| 2610 | Bell, 1, 6 | 6686 | *T* lever, 4 | 6963 | Post - long, 4 |
| 2623 | Spring, 1, 6, 7 | 6689 | Separator plate, 4 | | |
| 2658 | 6-32 hex. nut, 10 | 6690 | Full bar stripper, 3 | | |
| 2663 | Rubber buffer, 6 | 6691 | Full bar guide, 3 | | |
| 2669 | Lock washer, 1, 2, 3, 4, 5, 6 | 6692 | Full bar - standard, 11 | | |
| 2920 | Lock washer, 3 | 6706 | Magnet bracket, 4 | | |
| 2997 | Bushing, 7 | 6707 | Motor 1/20 H.P., 110 V., D.C., 8 | | |
| 3042 | Resistance - 150 ohms, 6 | | | | |
| | <u>Pneumatic Keypops</u> | | | | |
| 3054 | (A -), 11 | | | | |
| 3055 | (B ?), 11 | | | | |
| 3056 | (C :), 11 | | | | |
| 3057 | (D #), 11 | | | | |

NUMERICAL INDEX

| | | | | | |
|------|--|------|---|------|--|
| 6965 | Bearing rod, 4 | 7262 | Type bar pallet (D #), 11 | 7437 | #17, 11 |
| 6966 | Eccentric stop, 4 | 7263 | Type bar pallet (E #), 11 | 7438 | #18, 11 |
| 6969 | Main bracket, 3 | 7264 | Type bar pallet (F #), 11 | 7439 | #19, 11 |
| 6971 | Clutch lever, 5 | 7265 | Type bar pallet (G #), 11 | 7440 | #20, 11 |
| 6972 | Type bar backstop (assem.), 4 | 7266 | Type bar pallet (H #), 11 | 7441 | #21, 11 |
| 6979 | Hub (for 3/8" motor shaft), 8 | 7267 | Type bar pallet (I #), 11 | 7442 | #22, 11 |
| 6983 | Code bar post, 3 | 7268 | Type bar pallet (J #), 11 | 7443 | #23, 11 |
| 6985 | Main bail lever, 5 | 7269 | Type bar pallet (K #), 11 | 7444 | #24, 11 |
| 6986 | Sleeve, 5 | 7270 | Type bar pallet (L #), 11 | 7445 | #25, 11 |
| 6987 | Spacer washer, 3 | 7271 | Type bar pallet (M #), 11 | 7446 | #26, 11 |
| 6988 | Spring, 5 | 7272 | Type bar pallet (N #), 11 | 7447 | #27, 11 |
| 6989 | Spring lever, 5 | 7273 | Type bar pallet (O #), 11 | 7448 | #28, 11 |
| 6990 | 1/4-32 pilot screw, 5 | 7274 | Type bar pallet (P #), 11 | 7484 | Code bar post, 3 |
| 6991 | Gear - 32T, 8 | 7275 | Type bar pallet (Q #), 11 | 7485 | Governor (comp.) - (for 3/8" motor shaft), 8 |
| 6993 | Clutch spring, 5 | 7276 | Type bar pallet (R #), 11 | 7551 | Type bar pallet (, #), 11 |
| 6995 | Cam sleeve (assem.) - (with- out armature lock cam), 5 | 7277 | Type bar pallet (S #), 11 | 7552 | Type bar pallet (N #), 11 |
| 6997 | Selector mounting plate (with posts), 4 | 7278 | Type bar pallet (T #), 11 | 7586 | Adjusting screw, 4 |
| 6998 | Post, 4 | 7279 | Type bar pallet (U #), 11 | 7588 | 10-32 thumb nut, 4 |
| 6999 | Post, 4 | 7280 | Type bar pallet (V #), 11 | 7599 | Spring, 3 |
| 7001 | Washer, 1,2,3,4,6 | 7281 | Type bar pallet (W #), 11 | 7602 | Spring, 4 |
| 7002 | Washer, 1,2,3,4,5,6,7,10 | 7282 | Type bar pallet (X #), 11 | 7603 | Spring, 4 |
| 7007 | Trip plunger, 4 | 7283 | Type bar pallet (Y #), 11 | 7607 | Collar, 4 |
| 7013 | Bushing, 3 | 7284 | Type bar pallet (Z #), 11 | 7610 | Main shaft bracket, 5 |
| 7015 | Screw strip, 3 | 7285 | Type bar pallet (.,.), 11 | 7612 | Spring, 4 |
| 7017 | Main bail plunger, 3 | 7287 | Universal bar, 6 | 7614 | Spring, 4 |
| 7018 | Bushing, 3 | 7290 | Shaft, 2 | 7615 | Spring, 5 |
| 7020 | Plunger, 3 | 7293 | Gear - 39T, 7 | 7618 | Spring, 1 |
| 7021 | Bushing, 3 | 7318 | Contact lever, 7 | 7623 | Strap, 6 |
| 7022 | Reverse lever - right, 4 | 7334 | Post, 6 | 7631 | Wire guard, 8, 9 |
| 7023 | Reverse lever - left, 4 | 7336 | Gear - 19T, 2 | 7634 | Spring, 11 |
| 7024 | Reverse pawl - right, 4 | 7337 | Felt washer, 2, 6 | | <u>Pneumatic Keypots</u> |
| 7025 | Reverse pawl - left, 4 | 7338 | Post, 2, 6 | 7638 | S #, 11 |
| 7027 | Roller, 3 | 7339 | Cam sleeve (assem.), 7 | 7639 | F #, 11 |
| 7029 | Shaft, 3 | 7353 | Tape tension spring, 10 | 7640 | J Sgl., 11 |
| 7030 | Feed pawl, 3 | 7362 | Glass, 10 | 7641 | . #, 11 |
| 7031 | Check pawl, 3 | 7372 | Bearing, 7 | 7642 | .,., 11 |
| 7032 | Pawl, 7 | 7373 | Bearing bushing, 7 | 7654 | Shim, 7 |
| 7033 | Bracket, 4 | 7375 | Key lever shaft, 6 | 7655 | Spring, 1 |
| 7034 | Bushing, 4 | 7377 | Lock loop, 7 | 7656 | Spring, 2 |
| 7035 | Spool shaft, 4 | 7378 | Roller, 7 | 7659 | Spring, 3 |
| 7036 | Collar, 4 | 7380 | Transmitter (assem.) (with 7381 contact mounting (assem.)), 7 | 7661 | Adjusting lever, 8 |
| 7037 | Washer, 4 | 7381 | Contact mounting (assem.), 7 | 7678 | Roller journal, 3 |
| 7038 | Reverse arm shaft, 4 | 7382 | Front bracket, 7 | 7679 | Roller, 3 |
| 7039 | Collar, 4 | 7383 | Oiler, 7 | 7687 | Tape chute (assem.), 1 |
| 7042 | Bevel gear, 4 | 7384 | Oiler, 7 | 7688 | Chute, 1 |
| 7044 | Reverse arm, 4 | 7385 | Rear bracket (with spring posts), 7 | 7689 | Bracket, 1 |
| 7046 | Spacer lever, 3 | 7386 | Post, 7 | 7690 | Brace, 1 |
| 7047 | Feed pawl, 3 | 7387 | Brace, 7 | 7691 | Celluloid cover, 1 |
| 7048 | 10-32 x 1/4 shoulder screw, 3 | 7388 | Keyboard shaft, 7 | 7798 | Spring pawl post, 1 |
| 7058 | Plate, 3 | 7389 | Driving clutch, 7 | 7799 | Carriage spring pawl, 1 |
| 7059 | Detent lever, 3 | 7391 | Driven clutch, 7 | 7824 | Oil wick, 5 |
| 7067 | Collar, 3 | 7393 | Tape guide tube, 6 | 7825 | Spring, 11 |
| 7068 | Bevel gear, 3 | 7394 | Spacer bar, 6 | 7835 | Ribbon - black, 4 |
| 7070 | Ribbon feed lever, 3 | 7395 | Stop plate, 6 | 7836 | Ribbon - purple, 4 |
| 7078 | Bearing post, 6 | 7396 | Bracket - left, 6 | 7887 | Strap, 6 |
| 7080 | Spacer bar loop, 6 | 7397 | Bracket - right, 6 | 7965 | Spring, 3, 7, 11 |
| 7081 | Spring post, 7 | 7398 | Plate, 6 | 8047 | 3-B plug, 2 |
| 7082 | Pinion, 8T, 8 | 7399 | Contact spring backstop, 6 | 8094 | Brush (with spring), 8 |
| 7084 | Connection strip, 1 | 7400 | Disc - 19 spot, 7 | 8157 | Selector lever - right, 4 |
| 7085 | Terminal, 1 | 7402 | Contact spring - lower, 6 | 8158 | Selector lever - left, 4 |
| 7086 | Plate, 1 | 7403 | Contact spring - upper, 6 | 8165 | Washer, 8 |
| 7088 | Slip connection guard, 1 | 7404 | Lockout lever, 7 | 8170 | Felt pad, 2, 6 |
| 7091 | Insulator, 1, 2 | 7406 | Lockout lever shaft, 7 | 8177 | Pneumatic keypad (S. Bell), 11 |
| 7092 | Slip connection strip (assem.), 5 | 7407 | Spacing collar (long), 7 | 8184 | Washer, 3 |
| 7093 | Connection strip, 5 | 7408 | Spiral gear - 19T, 5 | 8222 | Wearing strip, 8 |
| 7094 | Connection spring, 5 | 7409 | Clutch lever, 7 | 8254 | Cable clamp, 2, 6 |
| 7095 | Plate, 5 | 7414 | Gear guard, 5 | 8255 | Pneumatic keypad (H #), 11 |
| 7096 | Fibre bushing, 6 | 7415 | 1/2-32 hex. nut, 5 | 8280 | Motor 1/20 H.P., 220 V., D.C., 8 |
| 7097 | Post 1 15/16" long (for machines without armature lock), 5 | 7421 | Type bars (without pallets) | 8281 | Armature, 8 |
| 7098 | Post 31/32" long (for machines without armature lock), 5 | 7422 | #1, 11 | 8287 | Typebar pallet (J #), 11 |
| 7099 | Thumb screw, 2, 6 | 7423 | #2, 11 | 8289 | Typebar pallet (S #), 11 |
| 7107 | Speed target - 13 spot, 8 | 7424 | #3, 11 | 8317 | Insulator, 1 |
| 7185 | Gear - 36T, 2 | 7425 | #4, 11 | 8354 | Pneumatic keypad (.,.), 11 |
| 7188 | Bearing, 2 | 7426 | #5, 11 | 8362 | Guide post, 3 |
| 7198 | Gear guard, 6 | 7427 | #6, 11 | 8448 | Lockout lever (with rollers), 1 |
| 7199 | Trip-off pawl, 6 | 7428 | #7, 11 | 8450 | Locking toe, 2 |
| 7256 | Gear hub (without post), 17 | 7429 | #8, 11 | 8453 | Code bar #1B, 11 |
| 7257 | Slip connection guard, 5 | 7430 | #9, 11 | 8454 | Code bar #2B, 11 |
| 7259 | Type bar pallet (A -), 11 | 7431 | #10, 11 | 8455 | Code bar #3B, 11 |
| 7260 | Type bar pallet (B #), 11 | 7432 | #11, 11 | 8456 | Code bar #4B, 11 |
| 7261 | Type bar pallet (C #), 11 | 7433 | #12, 11 | 8457 | Function bar, 11 |
| | | 7434 | #13, 11 | | |
| | | 7435 | #14, 11 | | |
| | | 7436 | #15, 11 | | |
| | | | #16, 11 | | |

NUMERICAL INDEX

| | | | | | |
|-------|--|-------|--|-------|---|
| 8458 | "J" or "S" pull bar, 11 | 70073 | 3-48 hex. nut, 3 | 71858 | Washer, 3 |
| 8459 | Function bar, 11 | 70314 | Washer, 4 | 71969 | Shift rocker arm, 1 |
| 8460 | Shift rocker, 1 | 70361 | Resistance unit (assem.) 250-500-1000 ohms, 2 | 71970 | Shift rocker, 1 |
| 8461 | Post, 1 | | | 71976 | Stop pawl plate, 4 |
| 8462 | Adjusting lever, 1 | 70497 | 5/16-32 hex. nut, 5 | 71980 | Roller, 1 |
| 8465 | Bracket, 1, 6 | 70722 | Resistance unit-500 ohms, 2 | 71981 | Rivet, 1 |
| 8466 | Carriage locking pawl, 1 | 70735 | Motor 1/25 H.P., 220 V., A.C., 8 | 71982 | Bushing, 1 |
| 8470 | Selector post 57/64" long (for machines with armature lock), 4 | 70736 | Armature, 8 | 71993 | Pneumatic keytop (N'), 11 |
| | | 70771 | Oiler, 8 | 71995 | Pneumatic keytop (C 1/8), 11 |
| 8472 | Locking wedge, 4 | 70785 | Spring post, 6 | 71998 | Brush holder ring, 8 |
| 8474 | Main bail plunger, 3 | 70791 | Tape reel container (with hooks) black, 10 | 71999 | End play spring, 8 |
| 8483 | Guard, 2 | 70792 | Tape reel retainer - black, 10 | 72018 | Spring bracket, 2 |
| 8484 | Post, 2 | | | 72019 | Toe, 2 |
| 8485 | Bell hammer bracket, 6 | | | 72023 | Cover plate, 6 |
| 8488 | Bushing, 6 | 70793 | Washer, 4 | 72031 | Celluloid keytops (A -), 11 |
| 8489 | Locking pawl, 6 | 70794 | Reversing lever - left, 4 | 72032 | Celluloid keytops (B 1), 11 |
| 8493 | Pawl, 3 | 70795 | Reversing lever - right, 4 | 72033 | Celluloid keytops (C :), 11 |
| 8494 | Spring post, 6 | 70796 | Ribbon spool cup - right, 4 | 72034 | Celluloid keytops (D #), 11 |
| 8495 | Post, 7 | 70797 | Ribbon spool cup - left, 4 | 72035 | Celluloid keytops (E 3), 11 |
| 8497 | Bell hammer, 1 | 70799 | Code bar #20, 11 | 72036 | Celluloid keytops (F), 11 |
| 8498 | Bell hammer, 6 | 70800 | Code bar #30, 11 | 72037 | Celluloid keytops (G &), 11 |
| 8499 | Shaft (with ratchet and detent), 3 | 70801 | Code bar #40, 11 | 72038 | Celluloid keytops (H &), 11 |
| 8501 | Gear hub (with post), 7 | 70803 | 6-40 x .307" pivot screw, 4 | 72039 | Celluloid keytops (I 8), 11 |
| 8504 | Post - 1-3/16" long (for machines with armature lock), 5 | 70827 | Cable (for A.C. or D.C.), 8 | 72040 | Celluloid keytops (J Seg), 11 |
| 8505 | Post - 2-5/32" long (for machines with armature lock), 5 | 70831 | Glass rail - green, 10 | 72041 | Celluloid keytops (K ()), 11 |
| 8507 | Cam sleeve (assem.) - with armature lock cam), 5 | 70832 | Glass rail - black, 10 | 72042 | Celluloid keytops (L), 11 |
| 8508 | Armature, 4 | 70833 | Copyholder - green, 10 | 72043 | Celluloid keytops (M &), 11 |
| 8509 | Main bail, 3 | 70834 | Copyholder - black, 10 | 72044 | Celluloid keytops (N'), 11 |
| 8510 | Adjusting clamp, 6 | 70838 | Bearing bracket, 5 | 72045 | Celluloid keytops (O 9), 11 |
| 8511 | Locking lever, 4 | 70871 | Spring bracket, 3, 4 | 72046 | Celluloid keytops (P 0), 11 |
| 8513 | Message line guide (assem.), 10 | 70872 | Brush holder (with insulator), 8 | 72047 | Celluloid keytops (Q 1), 11 |
| 8514 | Stop plate, 10 | 70873 | Brush holder cap, 8 | 72048 | Celluloid keytops (R 4), 11 |
| 8515 | Filler block, 10 | 70948 | Shift rocker lever, 1 | 72049 | Celluloid keytops (S), 11 |
| 8516 | Wooden filler - green, 10 | | Type bars (with pallets) | 72050 | Celluloid keytops (T 5), 11 |
| 8529 | Code bar #5B, 11 | 70951 | #1 (J), 11 | 72051 | Celluloid keytops (U 7), 11 |
| 8539 | 6-40 x 1/2 screw, 2, 3, 4, 6, 7 | 70952 | #2 (X /), 11 | 72052 | Celluloid keytops (V ;), 11 |
| 8558 | Tape reel container (with hooks) green, 10 | 70953 | #3 (Q 1), 11 | 72053 | Celluloid keytops (W 2), 11 |
| 8660 | Tape reel retainer - green, 10 | 70954 | #4 (V ;), 11 | 72054 | Celluloid keytops (X /), 11 |
| 8667 | Tape lever, 6 | 70955 | #5 (G &), 11 | 72055 | Celluloid keytops (Y 6), 11 |
| 8668 | Roller, 10 | 70956 | #6 (W 2), 11 | 72056 | Celluloid keytops (Z"), 11 |
| 8669 | 6-40 x 3/16 shoulder screw, 10 | 70957 | #7 (F), 11 | 72057 | Celluloid keytops (Figs), 11 |
| 8670 | Roller, 10 | 70958 | #8 (C), 11 | 72058 | Celluloid keytops (Ltrs), 11 |
| 8671 | 6-40 x 1/4 shoulder screw, 10 | 70959 | #9 (D #), 11 | 72059 | Celluloid keytops (. .), 11 |
| 8677 | Base - green, 6 | 70960 | #10 (R 4), 11 | 72060 | Celluloid keytops (#), 11 |
| 8682 | Sending-receiving printer cover (assem.) - (with copyholder and message line guide) - green, 10 | 70961 | #11 (S), 11 | 72061 | Celluloid keytops Blank, 11 |
| 8683 | Sending-receiving printer cover (assem.) - (with copyholder and message line guide) - black, 10 | 70962 | #12 (A -), 11 | 72064 | Resistance unit-1000 ohms, 2 |
| 8686 | Wooden filler (black), 10 | 70963 | #13 (T 5), 11 | 72065 | Resistance unit (assem.) - 500-1000-2000 ohms, 2 |
| 8698 | Spacer locking bail, 1 | 70964 | #14 (E 3), 11 | 72071 | Line cord (red), 2 |
| 8699 | Shift rocker lever, 1 | 70965 | #15 (N'), 11 | 72072 | Line cord (assem.) red, 2 |
| 8778 | Cover stop arm, 10 | 70966 | #16 (I 8), 11 | 72088 | 6-40 x 3/4 (1 1/16) screw, 8 |
| 8810 | Line cord (standard), 2 | 70967 | #17 (O 9), 11 | 72144 | Pivot pin, 10 |
| 8811 | Line cord (assem.), 2 | 70968 | #18 (H &), 11 | 72182 | Locating plate, 1 |
| 8883 | Terminal block, 2 | 70969 | #19 (L), 11 | 72284 | Spring post, 1 |
| 8884 | Terminal block, 2, 8, 9 | 70970 | #20 (U 7), 11 | 72513 | Driving disc, 5 |
| 8899 | Spacer locking bail, 1 | 70971 | #21 (M &), 11 | 72514 | Spring, 5 |
| 8974 | Post, 10 | 70972 | #22 (Y 6), 11 | 72515 | 5/16-32 hex. nut (L.H.), 5 |
| 9177 | Contact stop, 7 | 70973 | #23 (P 0), 11 | 72516 | Retaining disc, 5 |
| 9178 | Contact spring, 7 | 70974 | #24 (B 1), 11 | 72517 | 5/16-32 keyed nut (L.H.), 5 |
| 9182 | Contact lever shaft, 7 | 70975 | #25 (K ()), 11 | 72521 | Oil wick, 5 |
| 9203 | Bracket (with rollers), 6 | 70976 | #26 (Z *), 11 | 72522 | Oil wick, 5 |
| 9209 | Lower key lever, 6 | 70977 | #27 (, #), 11 | 72562 | Driving clutch, 5 |
| 9210 | Center key lever, 6 | 70978 | #28 (.), 11 | 72563 | Felt washer, 5 |
| 9211 | Upper key lever, 6 | 71045 | Lock nut - special, 4 | 72565 | Lock washer, 5 |
| 9339 | Terminal block (assem.) - (old style), 7 | 71046 | Stop screw - special, 4 | 72576 | Main shaft (with gear hub), 5 |
| 9767 | Detent, 1 | 71047 | Shim, 1, 3 | 72579 | Washer, 5 |
| 34432 | Washer, 4 | 71053 | Pneumatic keytop (F 1/4), 11 | 72592 | Bracket, 10 |
| 35503 | Rubber foot, 10 | 71057 | Pneumatic keytop (L 3/4), 11 | 72595 | Spring, 1 |
| 35551 | 10-32 x 3/8 screw, 10 | 71073 | Washer, 4 | 72644 | Ball bearing, 5 |
| 55080 | Bezel, 6 | 71161 | Bushing, 7 | 72688 | Type bar pallet (V 3/8), 11 |
| | | 71189 | Copper bearing retainer, 8 | 72689 | Type bar pallet (F 1/4), 11 |
| | | 71254 | Type pallet (,), 11 | 72690 | Type bar pallet (C 1/8), 11 |
| | | 71266 | Washer, 4 | 72691 | Type bar pallet (N 7/8), 11 |
| | | 71445 | Link, 4 | 72692 | Type bar pallet (H #), 11 |
| | | 71449 | Key lever guide - rear, 6 | 72693 | Type bar pallet (L 3/4), 11 |
| | | 71646 | 6-32 hex. nut, 10 | 72694 | Type bar pallet (M 1), 11 |
| | | 71659 | 6-40 x 11/64 shoulder screw, 1 | 72695 | Type bar pallet (B 5/8), 11 |
| | | 71672 | Cable clamp, 2 | 72696 | Type bar pallet (K 1/2), 11 |
| | | 71681 | Ribbon spool, 4 | 72704 | Pneumatic keytop (V 3/8), 11 |
| | | 71686 | Shift rocker lever, 1 | 72705 | Pneumatic keytop (B 5/8), 11 |
| | | 71695 | Bushing, 1 | 72706 | Pneumatic keytop (N 7/8), 11 |
| | | 71696 | Range scale (with bell crank mounting), 4 | 72707 | Pneumatic keytop (K 1/2), 11 |
| | | 71697 | Clamping plate, 4 | 72739 | Guard, 5 |
| | | 71826 | Stud, 7 | 72825 | Celluloid keytop (S Bell), 11 |
| | | 71844 | Spring post, 1 | 72827 | Celluloid keytop (J'), 11 |
| | | | | 72829 | Celluloid keytop (,), 11 |
| | | | | 72835 | Contact point, 8 |
| | | | | 72883 | Felt washer, 5 |

NUMERICAL INDEX

| | | | | | |
|-------|--------------------------------|-------|--------------------------------|-------|------------------------------|
| 72884 | Disc, 5 | | | | |
| 72885 | Spring, 5 | | | | |
| | Type bars (with pallets) | | | | |
| 72933 | #1 (S 1), 11 | 75564 | Type bars (with pallets) | 80297 | End shield (with oiler)- |
| 72934 | #4 (V 3/8), 11 | 75565 | #4 (V 3/8), 11 | | (for model 37233), 9 |
| 72936 | #7 (F 1/4), 11 | 75566 | #7 (F 1/4), 11 | 80298 | End shield (with oiler)- |
| 72937 | #8 (C 1/8), 11 | 75567 | #8 (C 1/8), 11 | | (for model 37233), 9 |
| 72938 | #11 (J 1), 11 | 75569 | #15 (N 7/8), 11 | 80299 | End play spring, 9 |
| 72940 | #15 (N 7/8), 11 | 75571 | #19 (L 3/4), 11 | 80300 | Switch, 9 |
| 72941 | #18 (H 3/4), 11 | 75572 | #24 (B 5/8), 11 | 80301 | Rotor (assem.) - (for |
| 72942 | #19 (L 3/4), 11 | 75599 | #25 (K 1/2), 11 | | model 37233), 9 |
| 72944 | #21 (M 1), 11 | 75600 | #11 (S 3/4), 11 | 80302 | Centrifugal mech., 9 |
| 72945 | #24 (B 5/8), 11 | 75601 | #27 (.), 11 | 80303 | Fan, 9 |
| 72946 | #25 (K 1/2), 11 | 75606 | #28 (= #), 11 | 80305 | Fibre washer, 9 |
| 72947 | #27 (.), 11 | 75607 | Spring, 7 | 80307 | Bracket (with bushing), |
| 72983 | Lower key lever, 6 | 75607 | Washer, 7 | | 9 |
| 72984 | Center key lever, 6 | 75652 | Celluloid keytop (F 1/4), 11 | 80308 | Fibre bushing, 9 |
| 72985 | Upper key lever, 6 | 75653 | Celluloid keytop (K 1/2), 11 | 80309 | Felt washer, 9 |
| 72988 | Type bar pallet (.), 11 | 75654 | Celluloid keytop (L 3/4), 11 | 80310 | Felt washer, 9 |
| 72989 | Type bar pallet (= #), 11 | 75655 | Celluloid keytop (C 1/8), 11 | 80311 | Cup washer, 9 |
| 73099 | Celluloid keytop (= #), 11 | 75656 | Celluloid keytop (V 3/8), 11 | 80312 | Washer, 8, 9 |
| 73100 | Celluloid keytop (.), 11 | 75657 | Celluloid keytop (B 5/8), 11 | 80313 | Washer, 9 |
| 73107 | Bushing, 5 | 75658 | Celluloid keytop (N 7/8), 11 | 80351 | 8-36 x 5/16 screw, 9 |
| 73153 | Hook - right - green, 10 | 75674 | Governor resistance strap, 6 | 80353 | Spring, 9 |
| 73154 | Hook - left - green, 10 | 75675 | Flat type resistance short | 80354 | Clamping stud (for |
| 73160 | Tape reel container - | | circuiting strap, 6 | | model 37233), 9 |
| | black (with hooks), 10 | 75687 | Bearing, 2 | 80355 | 4-48 x 7/16 screw, 9 |
| 73161 | Resistance unit - 50 ohms, 2 | 75689 | Spring, 3 | 80356 | Washer 1/32, 9 |
| 73178 | Separator, 7 | 75705 | Celluloid keytop (M 1), 11 | 80357 | 4-48 x 1/4 screw, 9 |
| 73179 | Insulator, 7 | 75852 | Celluloid keytop (H #), 11 | 80358 | Ball bearing, 9 |
| 73180 | Toggle switch, 2, 7 | 76484 | Terminal, 2 | 80365 | Spring, 2 |
| 73181 | Push button, 7 | 77130 | Fan, 9 | 80433 | Rotor (assem.) - (with |
| 73231 | Steel bearing retainer, 8 | 77221 | Adjusting wheel guard, 1 | | bearings and switch)- |
| 73232 | Felt washer, 8 | 77221 | Bracket, 10 | | (for model 37233), 9 |
| 73236 | Field frame (with oil cup), 8 | 77233 | Sending-receiving printer | 80471 | Clutch spring, 7 |
| 73237 | End shield (with oil cup), 8 | | cut-away cover (assem.) - | 80530 | Washer 3/64, 9 |
| 73238 | Field core (with coils and | | green - (with accessories) | 80531 | Washer, 1/64, 9 |
| | insulation), 8 | | - (includes copyholder and | 80553 | Synchronous motor 1/50 |
| 73239 | Set of field coils (upper and | | message line guide, 73779 | | H.P., 110 V., 60 cycle, |
| | lower), 8 | | tape guide assem. and 73789 | | A.C., (G.E. models |
| 73240 | Field core (with coils and in- | 77234 | guard), 10 | | #58H25AB2 and #58H25AB21, |
| | sulation), 8 | 77235 | Switch cover, 7 | | 9 |
| 73241 | Set of field coils (upper and | 77235 | Cable (W.D. #988), 2, 6 | 80555 | Rotor (assem.) - (with |
| | lower), 8 | 77237 | Motor control switch (assem.), | | bearings and switch) - |
| 73242 | Insulation (for one field | | green, 7 | | (for model #58H25AB2 and |
| | coil), 8 | 77377 | Hook - left - black, 10 | 80556 | Rotor (assem.) - (with |
| 73243 | Locking wedge, 8 | 77378 | Hook - right - black, 10 | | bearing and switch) - |
| 73244 | Locking wedge screw, 8 | 77383 | Pneumatic keytop (S 9), 11 | | (for models #58H25AB2 and |
| 73358 | Bushing (with wick), 5 | 77384 | Pneumatic keytop (.), 11 | | #58H25AB21, 9 |
| 73359 | Main shaft (with gear hub and | 77385 | Pneumatic keytop (= #), 11 | 80557 | End shield (with oiler) - |
| | wicks), 5 | 77393 | Motor control switch and | | (for model #58H25AB2 and |
| 73392 | Bushing, 3 | | break button (assem.) - | | #58H25AB21), 9 |
| 73514 | Brush holder (double), 8 | 77399 | green, 7 | 80558 | End shield (with oiler) - |
| 73595 | Clamping rod, 8 | 77451 | Rivet, 10 | | (for model #58H25AB2 and |
| 73611 | Oil wick, 2 | 77812 | Stop, 6 | | #58H25AB21), 9 |
| 73625 | Platen core, 2 | 77955 | Post, 2 | 80559 | Clamping stud (for model |
| 73626 | Platen roll rubber, 2 | 78025 | Washer, 4 | | #58H25AB2 and #58H25AB21), |
| 73627 | Pressure hub, 2 | 78029 | 4-48 x 3/16 screw, 8, 9 | | 9 |
| 73628 | Platen roll (assem.), 2 | 78217 | Oil wick, 7 | 80566 | Bushing, 7 |
| 73639 | Rod, 10 | | Synchronous motor, 1/50 H.P., | 80581 | Spring, 6 |
| 73640 | Bracket (with rod), 10 | | 110 V., 60 cycle, A.C. | 80754 | Oiler, 9 |
| 73641 | Line guide, 10 | 78244 | model #37233, 9 | 80840 | Insulating block, 2 |
| 73670 | Terminal block (assem.), 7 | 78433 | Oiler, 3 | 80911 | Conduit, 2 |
| 73672 | Switch case, 7 | 78433 | Motor handwheel, 9 | 80912 | Resis. unit - 50 o.h.m.'s, |
| 73678 | Switch cover, 7 | 78476 | Field core (with coils and | | 2 |
| 73705 | Terminal block, 7 | | insulation), 8 | 80925 | Connector, 2 |
| 73778 | Base - green, 2 | 78477 | Set of field coils (upper | 80948 | Wood screw, 2 |
| 73779 | Tape guide (assem.), 10 | | and lower), 8 | 82296 | Tape reel retainer - green, |
| 73789 | Guard, 10 | 78479 | Field core (with coils and | | 10 |
| 73829 | Adapter plate, 7 | | insulation), 8 | 82297 | Tape reel container - |
| 73967 | Celluloid cover, 10 | 78480 | Set of field coils (upper | | green (with hooks), 10 |
| 73968 | Tape guide, 10 | | and lower), 8 | 82474 | Terminal, 2 |
| 75071 | Terminal block (assem.) - | 78509 | Gear - 30T, 9 | 82715 | Tape reel retainer - black, |
| | (new style), 7 | 78510 | Pinion - 7T, 9 | | 10 |
| 75226 | Oil wick, 3 | 78533 | Spring, 1 | 82717 | Tape reel container - green |
| 75229 | Spring, 4 | 78596 | Washer, 4 | | (with hooks), 10 |
| 75336 | Celluloid, 2 | 78597 | 10-32 x 9/64 shoulder screw, 4 | 82916 | Tape reel container (assem.) |
| 75450 | Post, 1 | 78624 | Base - black, 6 | | green, 10 |
| 75525 | Celluloid keytop (S 9), 11 | 78675 | Terminal block and magnet | 86868 | Bushing, 8 |
| 75527 | Type pallet (S 9), 11 | | cord, 2 | 86869 | Post, 8 |
| 75555 | Type pallet (V 3/8), 11 | 78681 | Motor (with accessories), 8 | 87185 | Tape reel container (assem.) |
| 75556 | Type pallet (V 3/8), 11 | 78682 | Motor (with accessories), 8 | | green, 10 |
| 75557 | Type pallet (F 1/4), 11 | 78781 | Magnet strap, 4 | 87186 | Tape reel container (black), |
| 75558 | Type pallet (O 1/8), 11 | 78823 | Spring, 3 | | 10 |
| 75560 | Type pallet (N 7/8), 11 | 78824 | Spring, 4 | 87935 | Rod, 10 |
| 75562 | Type pallet (L 3/4), 11 | 78826 | Mounting block, 4 | 87936 | Bracket, 10 |
| 75563 | Type pallet (B 5/8), 11 | 80178 | Insulator - rear, 7 | 87937 | Bracket, (with rod), 10 |
| | | 80180 | Spring, 7 | 87939 | Bracket, 10 |
| | | 80205 | Insulator - front, 7 | 90104 | Power cord (assem.), 2 |